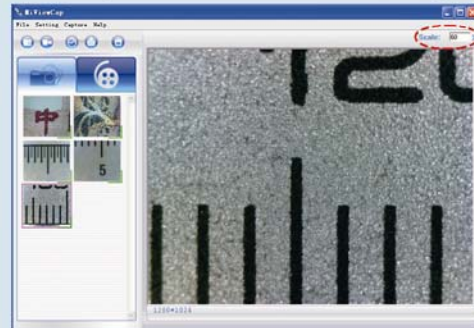
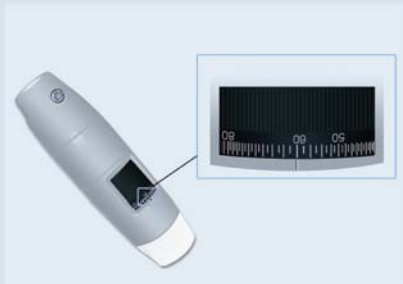
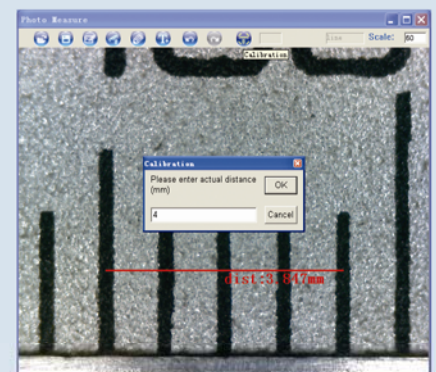
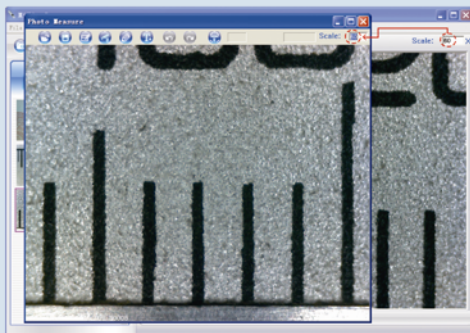


How to Use Calibration function

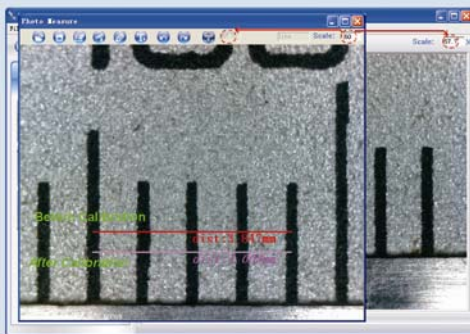
1. Select a known measurement standard as the to-be-observed object, such as a ruler, to be used for calibration. Bring image of the selected ruler into focus by turning the “Focus & Magnification adjustment wheel”, determine the magnification by taking a reading from the scale on the focus dial, enter the scale value in the “Scale” box in the upper right corner of the screen, and then take the image.



2. Now double click to open the image of the measurement calibration standard (图3), and the scale of magnification will be automatically loaded for measuring.

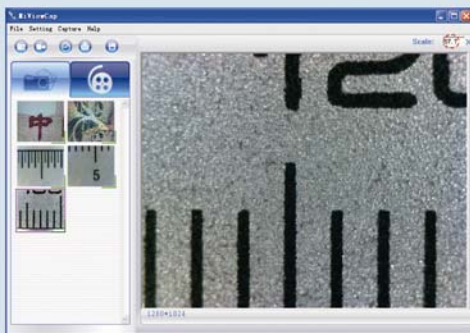


4. The software will automatically calibrate the scale of magnification and will show the calibrated scale of magnification at the right-hand box of calibration button, and also automatically adjust the scale of main program on this focus point.



3. Now click the button of calibration to take a sample measurement of the selected calibration standard by clicking beginning and ending points across the known measurement value (such as 4mm). A measurement value before calibration will be displayed (3.847mm in the example below), and then enter the exact known value of the measurement sample (4mm in this example) when the window of Calibration pop-up and then click “OK”.

5. Now the software is ready to take new images with the calibrated magnification at this focus point (Don't adjust the “Focus & Magnification adjustment wheel”), thus the measurement for these captured images after calibration will be very accurate and the error rate of measurement is under 3%.



Note: If you change the focus point (i.e. change the “Focus & Magnification adjustment wheel”), you must re-do the calibration.

