

# Datalogger and USB Interface

Hardware Requirements and Setup.....	1
Software Requirements and Setup .....	2
On-Line Operation .....	5
• Run the software .....	5
• Data Convert .....	7
• Apply for Graph.....	9
• Graph Track Mode .....	10
1. Cursor Coordinates .....	10
2. PanXY.....	10
3. PanX.....	11
4. PanY.....	11
5. ZoomXY .....	12
6. ZoomX .....	12
7. ZoomY .....	13
• Print Graph.....	14
• Histogram & Ln ( Percentile Sound Level ) .....	15
• Control Panel .....	16
1. LCD Contrast Setting.....	17
2. Pause Setting.....	17
3. LCD APO Setting .....	18
4. LED Alarm Setting .....	18
5. DosiMeter Setting .....	19
6. Auto Lock Keypad Setting.....	21
7. Timers Setting .....	21
8. Auto Scroll Screens Setting .....	22
9. Screen Setting .....	23
10. Welcome Text Setting .....	24
11. Calibration Setting .....	24
12. Lunch Time Setting.....	25
13. Record Interval Time Setting.....	25
• RTC ( Real Time Clock) .....	26
• Read SD Card .....	27
Edit DownLoad Data .....	28
• Delete SD Card File.....	29
• Language.....	30

# **Hardware Requirements and Setup**

## **PC HardWare Requirements :**

HDD, CD Rom, 486 PC or above, with available USB mini B / USB port

EGA or higher monitor

4M bytes or more memory size

## **PC HardWare Setup :**

- 1) Switch off all power related to the PC
- 2) Connect the USB cable to USB port
- 3) Switch on all related power
- 4) Connect the USB mini B cable to the meter
- 5) Charger dock must be connected to the power supply

# Software Requirements and Setup

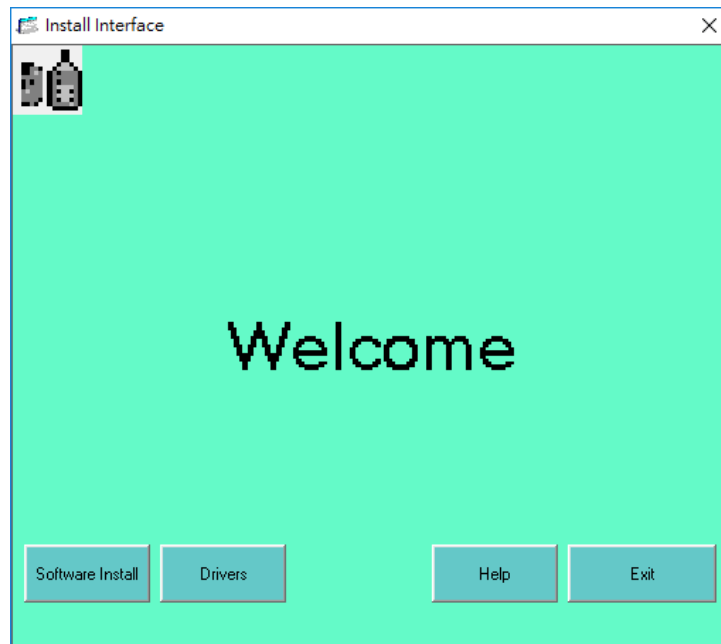
1 Start up windows system

2 Close all other applications

3 Insert the disk in CD drive

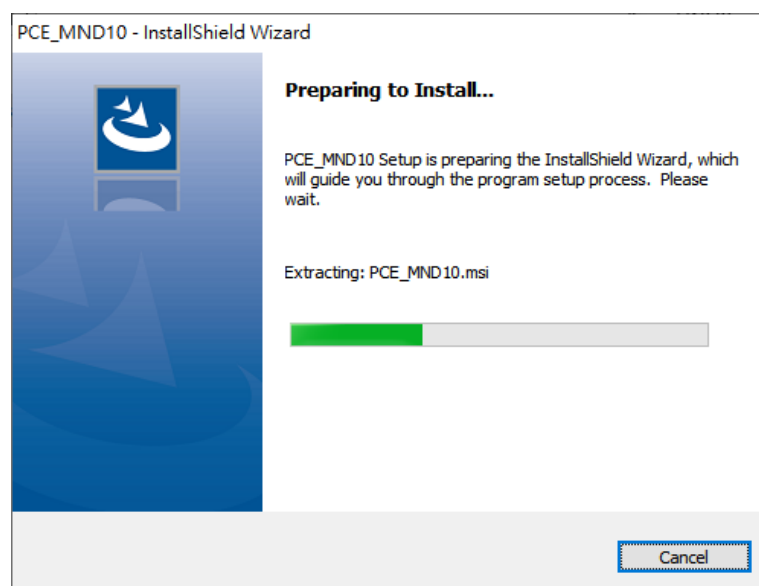
(if autorun does not start, open the CD drive then run “SetupInterface.exe” )

Follow the on-screen instructions.



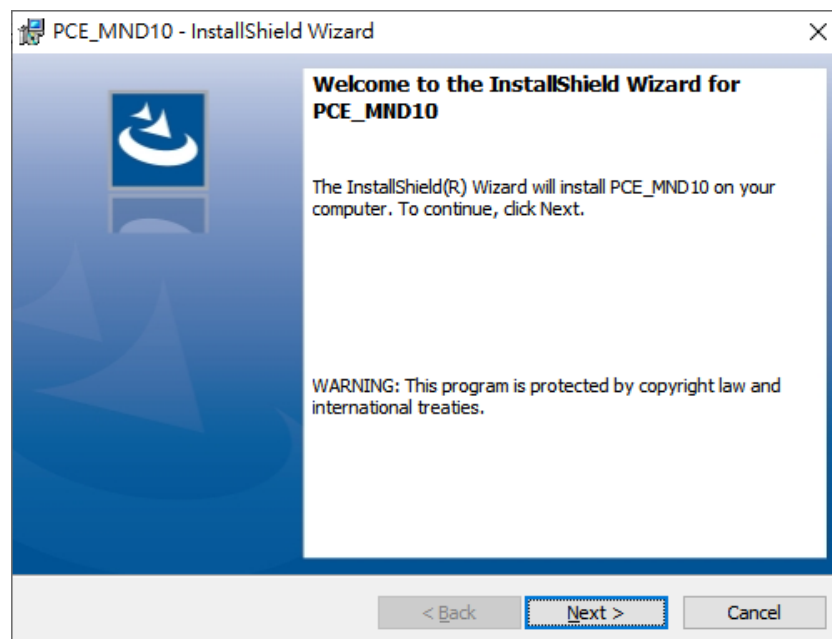
Click Software Install

1).



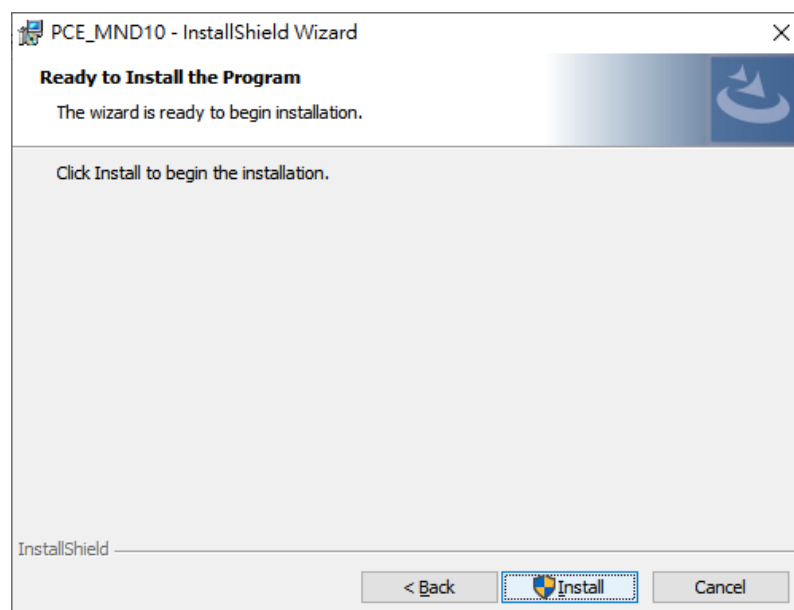
Setup will run automatically.

2).



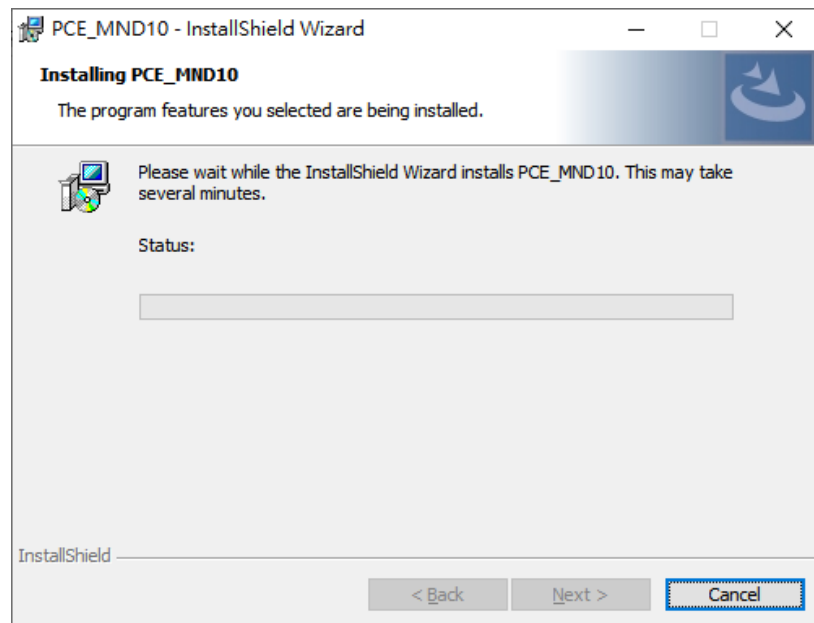
Click Next> button

3).



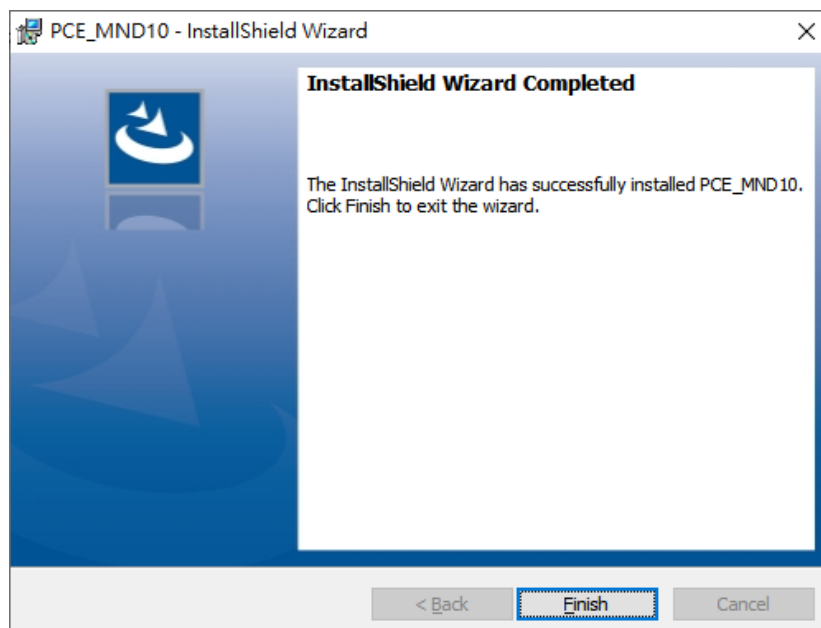
Click Install> button

4).



Setup will run automatically.

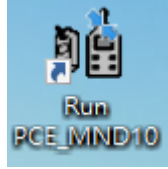
5).



Click **Finish** button to complete.

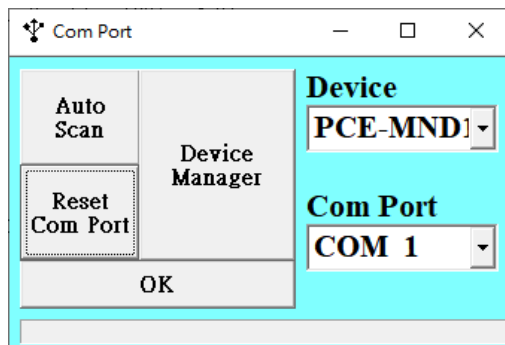
# On-Line Operation

- **Run the software**

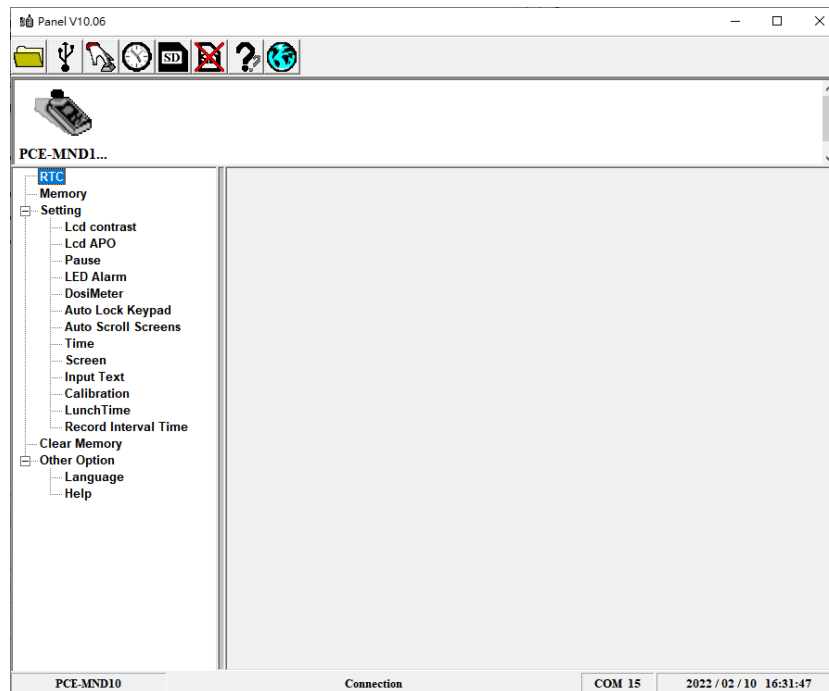


1. Click icon.

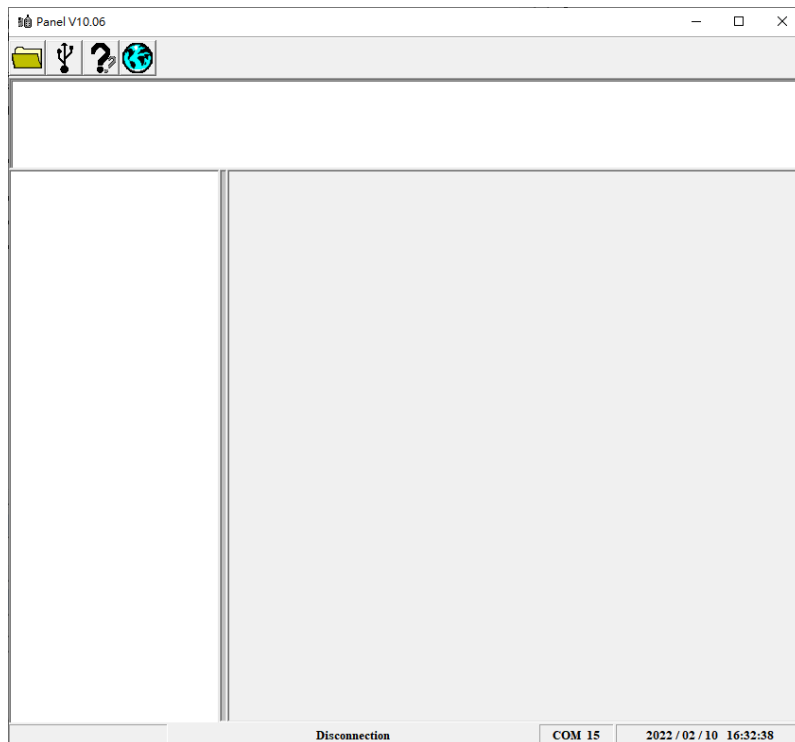
2. Check COM Port



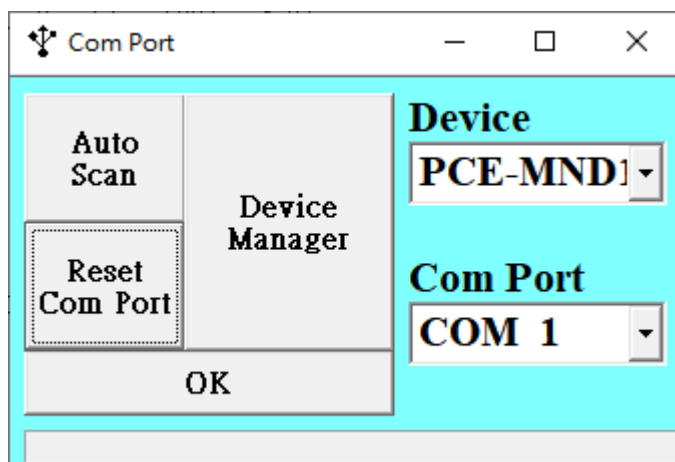
3. Main software screen  
Device connecting



No Device Connection Or COM Port Error

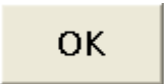


4. Click Main toolbar  Setting comport.



Device select: PCE-MND10

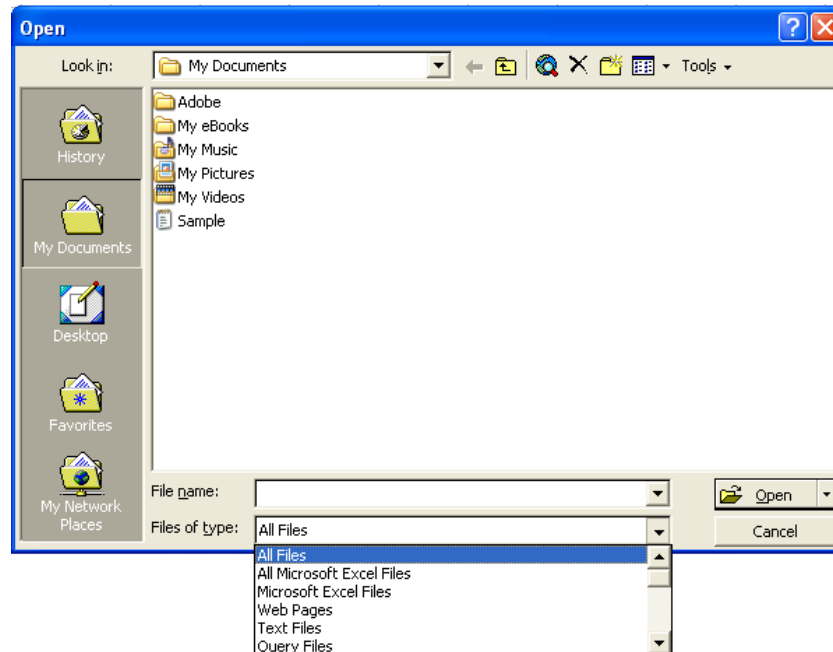
Comport select: PC link device comport

Click  button.

- **Data Convert**

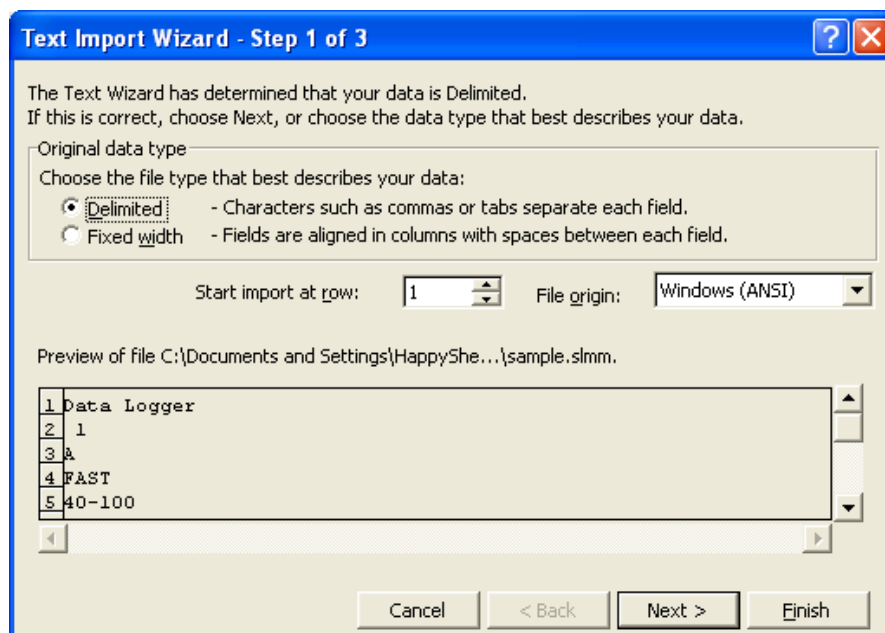
Apply for Excel

Open Microsoft Excel, find the file saved in Excel type, for example, test.xls.



or find any file already saved in HDD, for example, sample.dat.

The "Text Import Wizard" then appears. Follow the steps 1 to 3 to complete.



Click Next> button



**Text Import Wizard - Step 2 of 3**

This screen lets you set the delimiters your data contains. You can see how your text is affected in the preview below.

Delimiters

☒ Tab ☐ Semicolon ☐ Comma

☐ Space ☐ Other:

☐ Treat consecutive delimiters as one

Text qualifier:

Data preview

No.s	Date Time	dB
1	2009/04/27 14:10:37	55.8
2	2009/04/27 14:10:38	56.1
3	2009/04/27 14:10:39	55.7

Cancel < Back Next > Finish

Click Next> button

**Text Import Wizard - Step 3 of 3**

This screen lets you select each column and set the Data Format.

'General' converts numeric values to numbers, date values to dates, and all remaining values to text.

Advanced...

Column data format

☒ General

☐ Text

☐ Date:

☐ Do not import column (skip)

Data preview

General	General	General	General
55.1			
No.s	Date Time	dB	
1	2009/04/27 14:10:37	55.8	
2	2009/04/27 14:10:38	56.1	
3	2009/04/27 14:10:39	55.7	

Cancel < Back Next > Finish

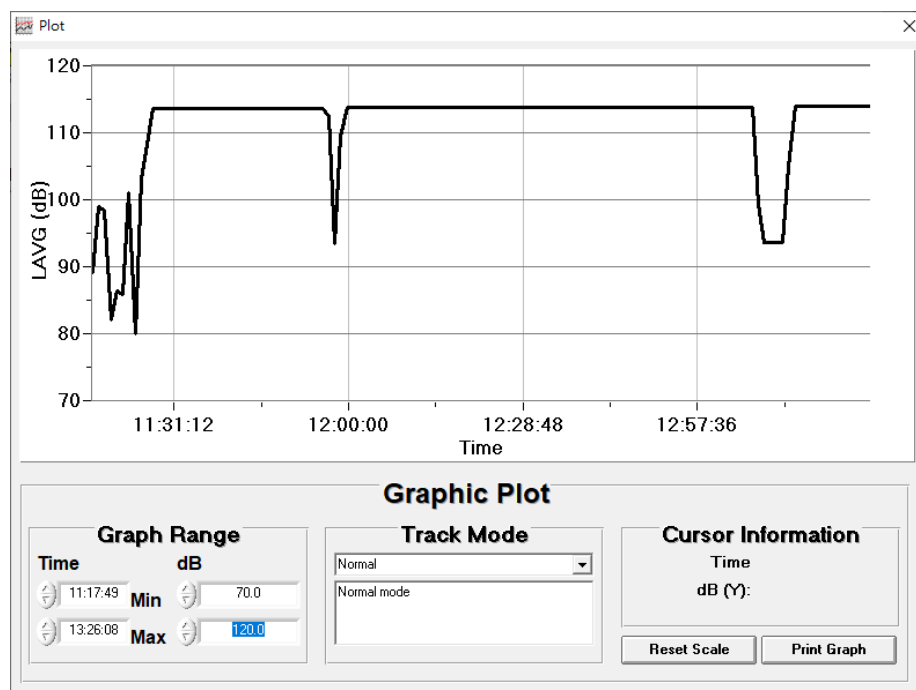
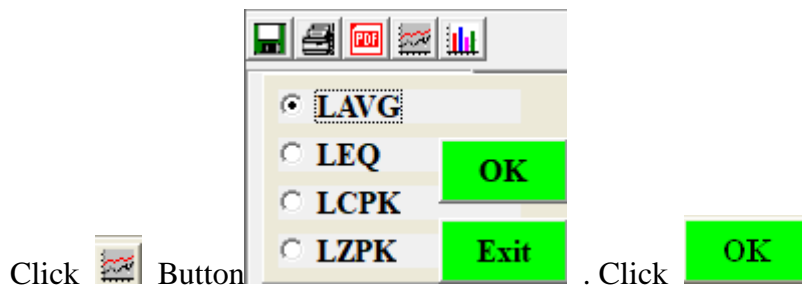
Click **Finish** button

	A	B	C	D
1	DOS 700			
2				
3	HeaderData			
4		D1	D2	D3
5	Start Date/Time	2016/8/26 14:34	2016/8/26 14:34	2016/8/26 14:34
6	Stop Date/Time	2016/8/26 14:48	2016/8/26 14:48	2016/8/26 14:48
7	Total Point	14	14	14
8	Threshold	80 dB	90 dB	80 dB
9	Criterion	90 dB	90 dB	90 dB
10	Exchange Rate	5 dB	5 dB	5 dB
11	Exceedance	105 dB	105 dB	105 dB
12	Interval Time	60 Sec	60 Sec	60 Sec

- **Apply for Graph**

Open a saved data file in the software program and then click  .

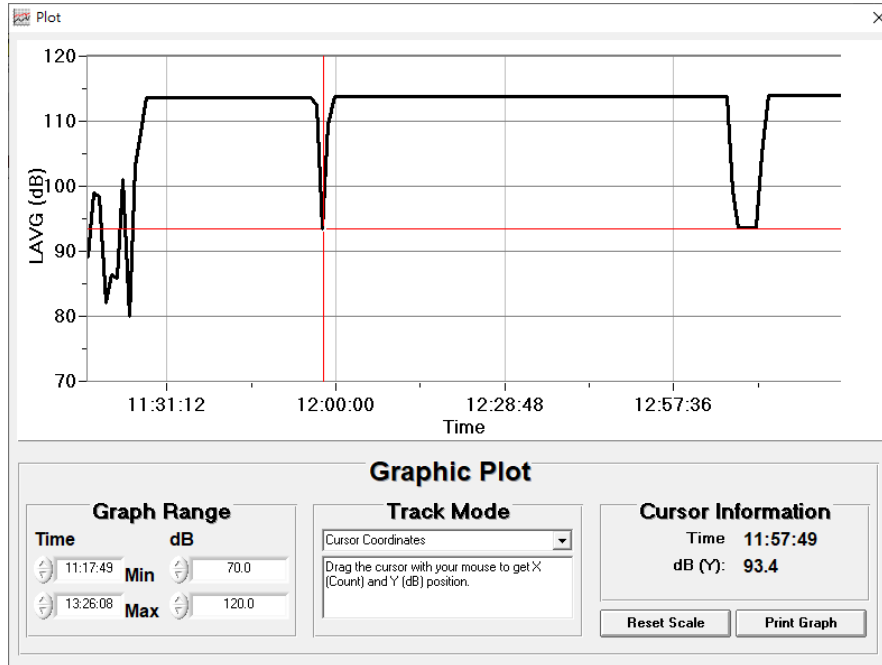
HeaderItem	D1	D2	D3	No.s	Date/Time	LAVG	LEQ	LCPK	LZPK
Start Date/Time	2019/05/30 11:50:36	2019/05/30 11:50:36	2019/05/30 11:50:36	1	2019/05/30 11:51:36	94.2 dB	94.2 dB	118.6 dB	119.4 dB
Stop Date/Time	2019/05/30 11:56:51	2019/05/30 11:56:51	2019/05/30 11:56:51	2	2019/05/30 11:52:36	94.2 dB	94.2 dB	105.5 dB	105.8 dB
Threshold	80 dB	80 dB	90 dB	3	2019/05/30 11:53:36	94.2 dB	94.2 dB	105.7 dB	105.4 dB
Criterion	90 dB	90 dB	90 dB	4	2019/05/30 11:54:36	94.2 dB	94.2 dB	99.9 dB	100.2 dB
Exchange Rate	5 dB	5 dB	5 dB	5	2019/05/30 11:55:36	94.2 dB	94.2 dB	99.4 dB	100.9 dB
Exceedance Level	105 dB	105 dB	105 dB	6	2019/05/30 11:56:36	94.2 dB	94.2 dB	103.5 dB	104.6 dB
Record Interval Time	1 Min	1 Min	1 Min	7	2019/05/30 11:56:51	93.0 dB	93.5 dB	110.4 dB	110.9 dB
Record Total Sets	7	7	7						
PW Duration	08:00:00	08:00:00	08:00:00						
Duration	00:06:09	00:06:09	00:06:09						
LAS > dB	(>105)_00:00:00	(>105)_00:00:00	(>105)_00:00:00						
Exceed StopTime	00:06:09	00:06:09	00:06:09						
Dose	2.2 %	2.2 %	2.2 %						
PDose	179.3 %	179.3 %	179.3 %						
TwA	62.7 dB	62.7 dB	62.7 dB						
PTWA	94.2 dB	94.2 dB	94.2 dB						
LAVG	94.2 dB	94.2 dB	94.2 dB						
LEPd	75.2 dB	75.2 dB	75.2 dB						
PLEPd	94.2 dB	94.2 dB	94.2 dB						
LAEQ	94.2 dB	94.2 dB	94.2 dB						
LCEQ	94.2 dB	94.2 dB	94.2 dB						
LZEQ	94.2 dB	94.2 dB	94.2 dB						
LAE	119.8 dB	119.8 dB	119.8 dB						
Evaluator									
Evaluated									
Department									
Company									
Observations									



- **Graph Track Mode**

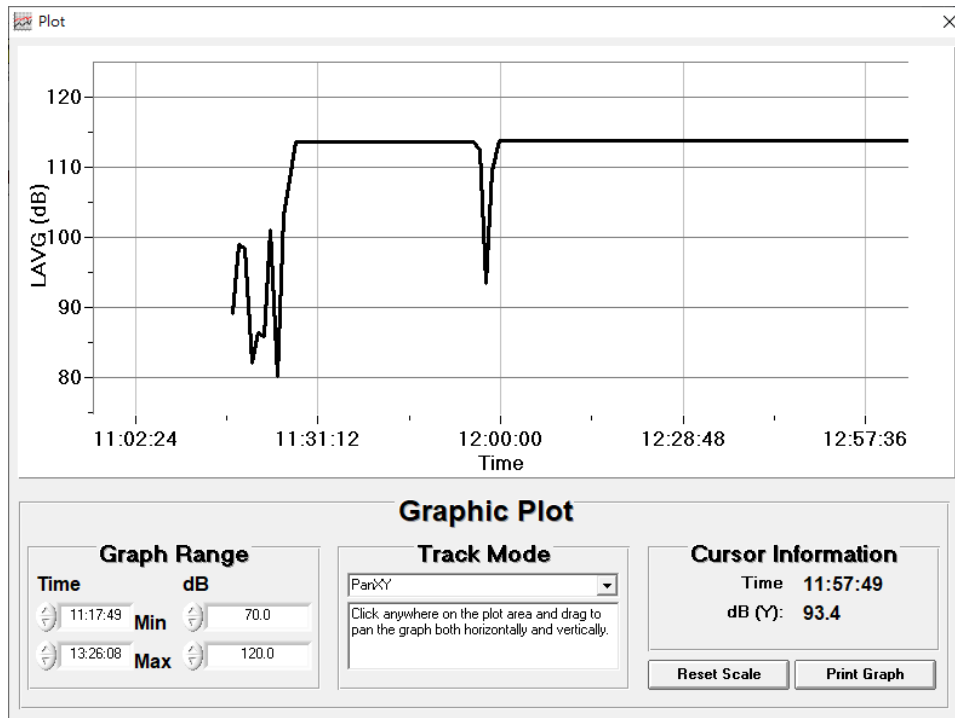
1. **Cursor Coordinates**

Drag the cursor with your mouse to get X (Count) and Y (dB) position.



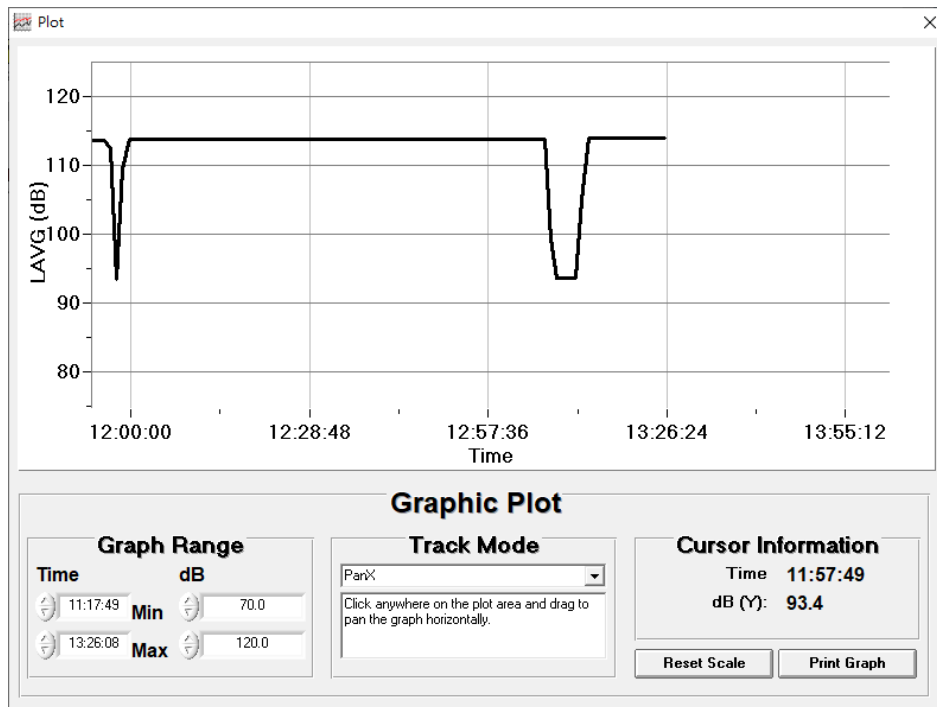
2. **PanXY**

Click anywhere on the plot area and drag to pan the graph both horizontally and vertically.



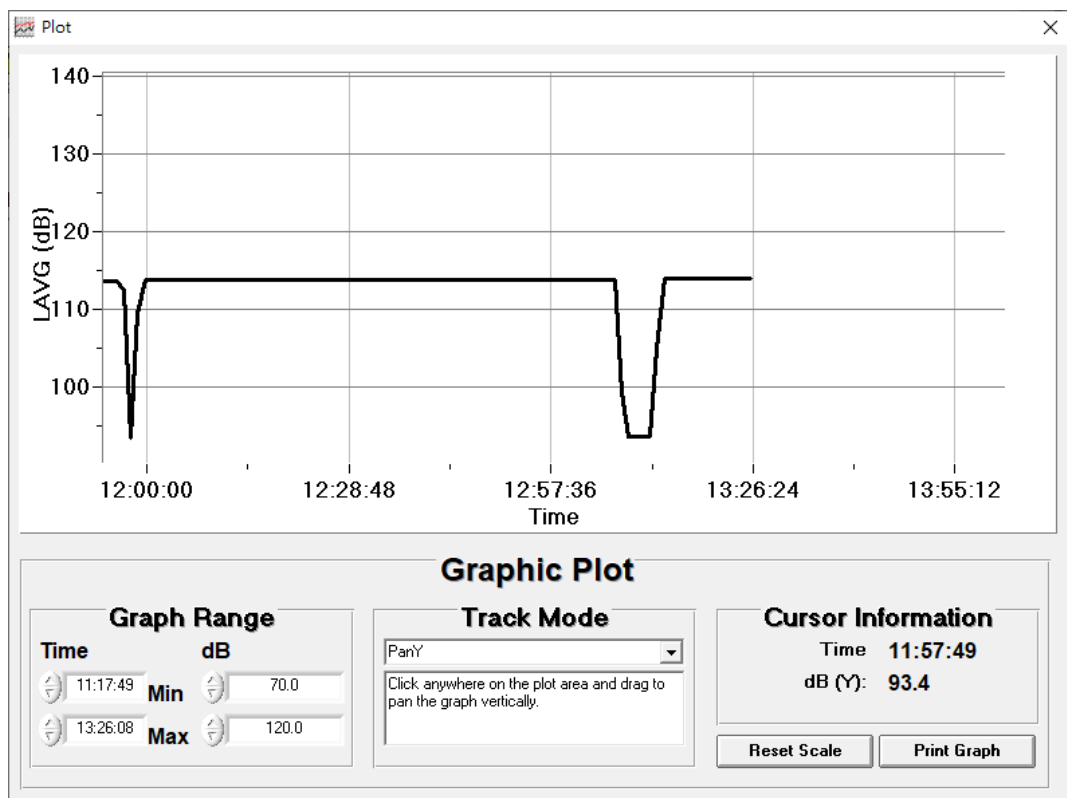
### 3. PanX

Click anywhere on the plot area and drag to pan the graph horizontally.



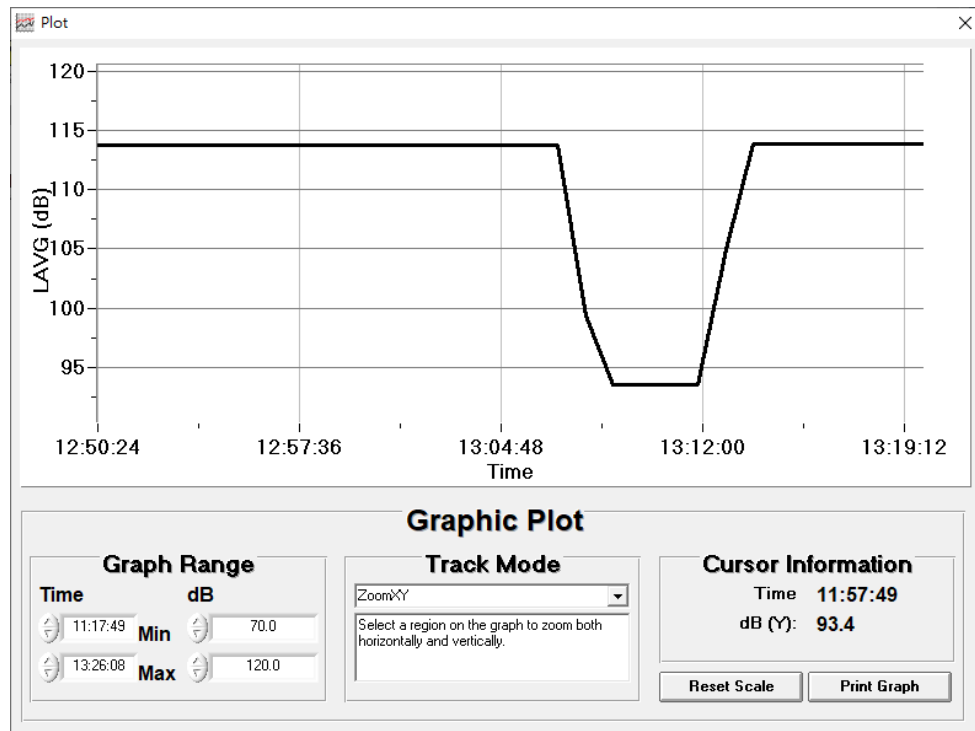
### 4. PanY

Click anywhere on the plot area and drag to pan the graph vertically.



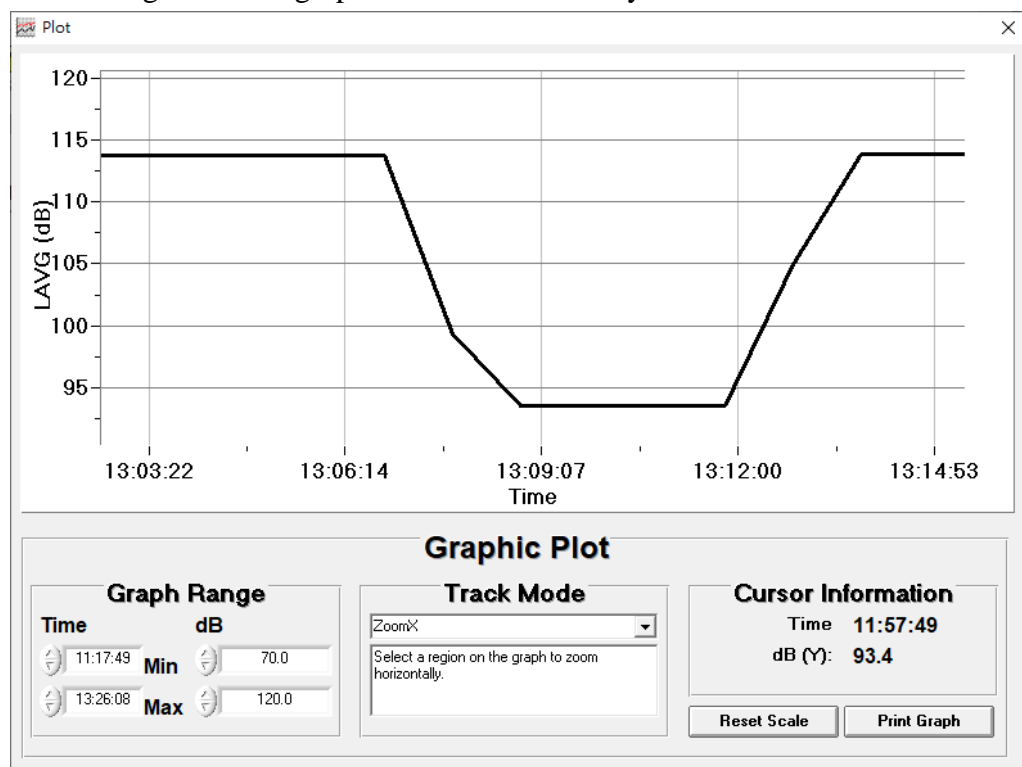
## 5. ZoomXY

Select a region on the graph to zoom both horizontally and vertically.



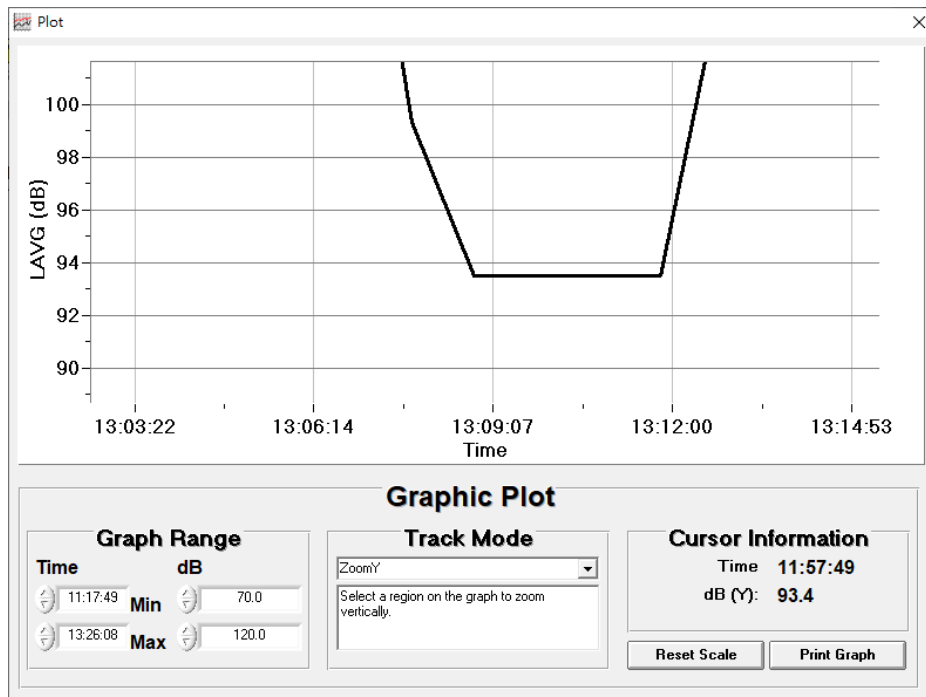
## 6. ZoomX

Select a region on the graph to zoom horizontally.



## 7. ZoomY

Select a region on the graph to zoom vertically.

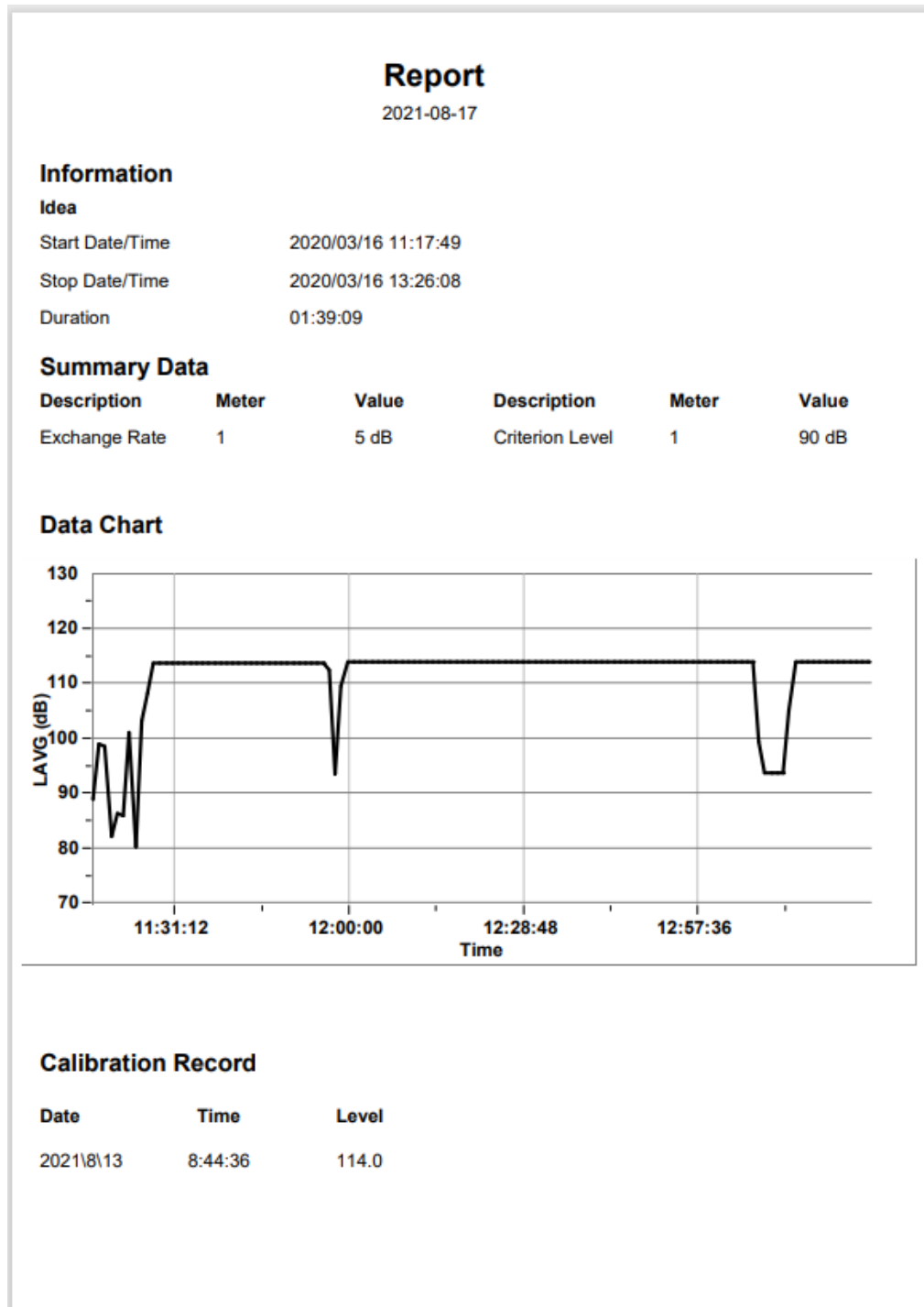


- **Print Graph**


Click Graph Mode

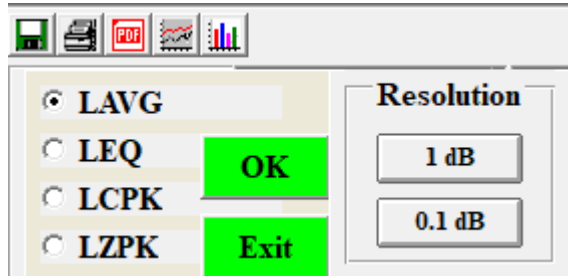
Print Graph

Button.

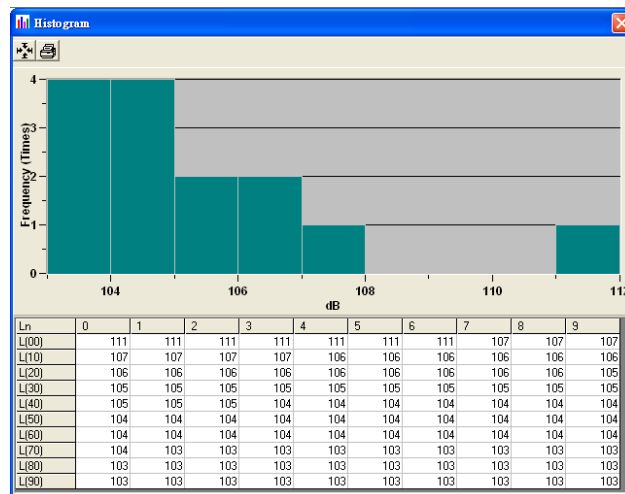


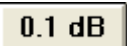
- **Histogram & Ln ( Percentile Sound Level )**

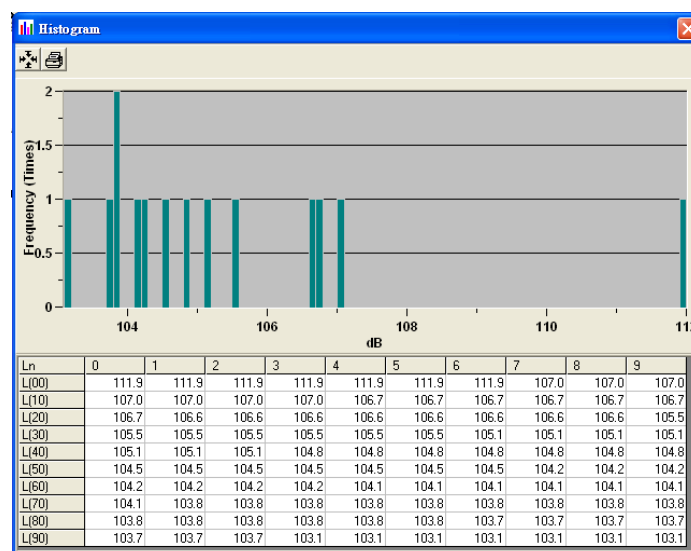
Open a saved data file in the software program and then click .



In the window above, click  for the Revolution of 1 dB



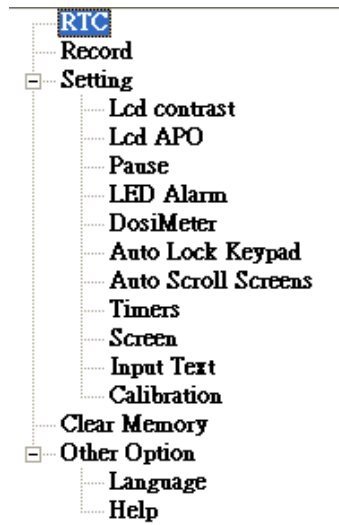
Click  for the Revolution of 0.1 dB



Click  Button to print




- **Control Panel**

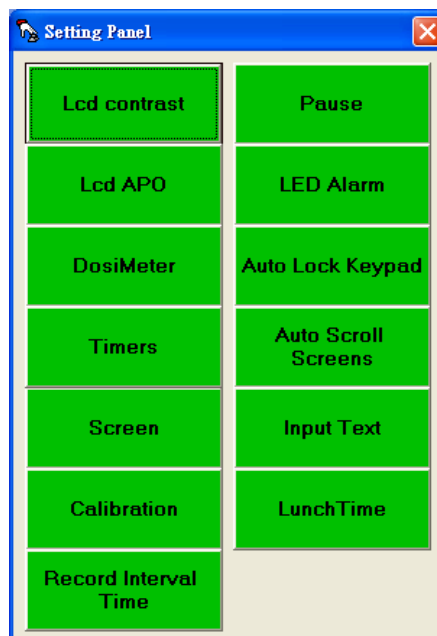


Click

Item. Don't show control panel.



Click  button or Device item **PCE-MND1...** , Show control panel.

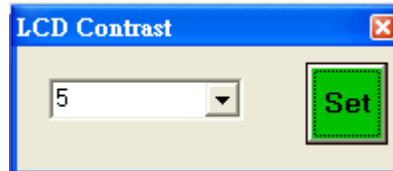


## 1. LCD Contrast Setting



Click Button.

Device LCD Contrast setting Get OK.



Device LCD Contrast setting Get fail.



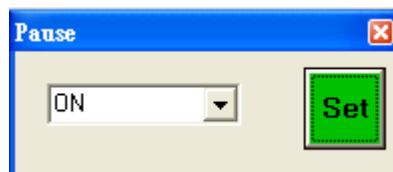
Click Button. Show  is set OK.

## 2. Pause Setting

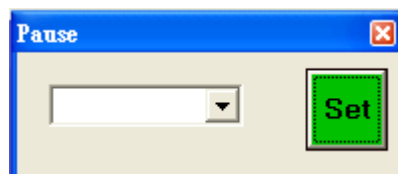


Click Button.

Device Pause setting Get OK.




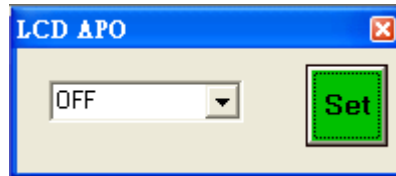
Device Pause setting Get fail.



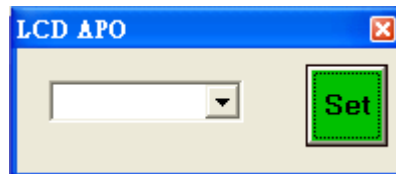
Click Button. Show  is set OK.



### 3. LCD APO Setting

Click  Button.  
Device LCD APO setting Get OK.




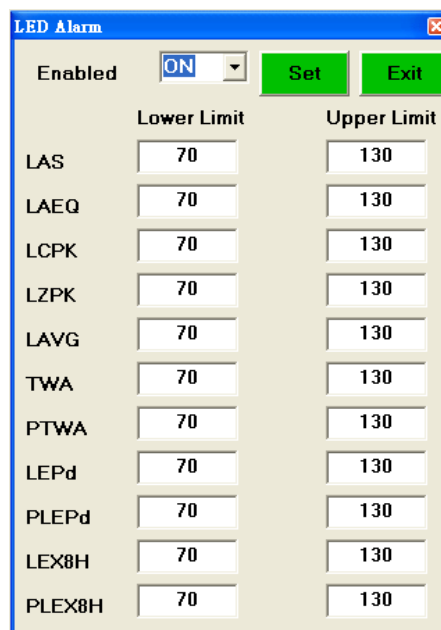
Device LCD APO setting Get fail.



Click  Button. Show  is set OK.

### 4. LED Alarm Setting

Click  Button.  
Device LED Alarm setting Get OK.



	Lower Limit	Upper Limit
LAS	70	130
LAEQ	70	130
LCPK	70	130
LZPK	70	130
LAVG	70	130
TWA	70	130
PTWA	70	130
LEPd	70	130
PLEPd	70	130
LEX8H	70	130
PLEX8H	70	130

Device LED Alarm setting Get fail.

LED Alarm

Enabled OFF Set Exit

	Lower Limit	Upper Limit
LAS	80	120
LAEQ	80	120
LCPK	80	120
LZPK	80	120
LAVG	80	120
TWA	80	120
PTWA	80	120
LEPd	80	120
PLEPd	80	120
LEX8H	80	120
PLEX8H	80	120

Click Set Button. Show 

DosiMeter  
Set OK !!!  
確定

 is set OK.

5. DosiMeter Setting

Click DosiMeter Button.

Device DosiMeter setting Get OK.



DosiMeter

Set Exit


	Meter 1	Meter 2	Meter 3
Enabled	<span>Enabled</span>	<span>Disabled</span>	<span>Disabled</span>
Standard	<span>OSHA-90</span>		
Threshold			
Criterion			
Exchange Rate			
Exceedance			
PW Duration			

Device DosiMeter setting Get fail.

DosiMeter		Meter 1	Meter 2	Meter 3
<b>Set</b>	<b>Exit</b>			
<b>Enabled</b>	Enabled	Enabled	Enabled	Enabled
<b>Standard</b>	OSHA80	OSHA80	OSHA80	OSHA80
<b>Threshold</b>	70	70	70	70
<b>Criterion</b>	70	70	70	70
<b>Exchange Rate</b>	3	3	70	70
<b>Exceedance</b>	70	70	70	70
<b>PW Duration</b>	00 00	00 00	00 00	00 00

Click  Button. Show  is set OK.

## 6. Auto Lock Keypad Setting

Click  Button.

Device Auto Lock Keypad setting Get OK.



Device Auto Lock Keypad setting Get fail.

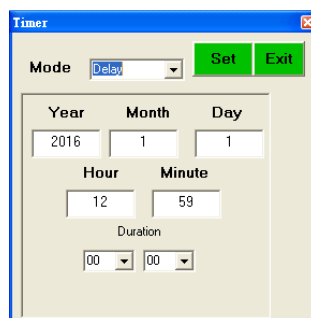


Click  Button. Show  is set OK.

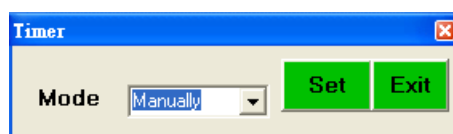
## 7. Timers Setting

Click  Button.

Device Timers setting Get OK.



Device Timers setting Get fail.

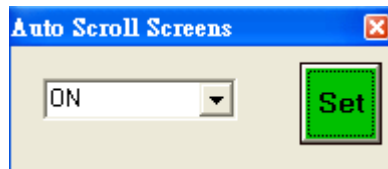


Click  Button. Show  is set OK.

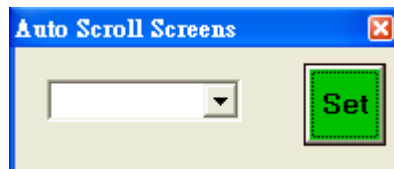
## 8. Auto Scroll Screens Setting

Click  Button.

Device Auto Scroll Screens setting Get OK.



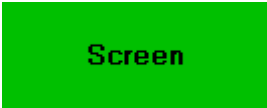
Device Auto Scroll Screens setting Get fail.



Click  Button. Show  is set OK.

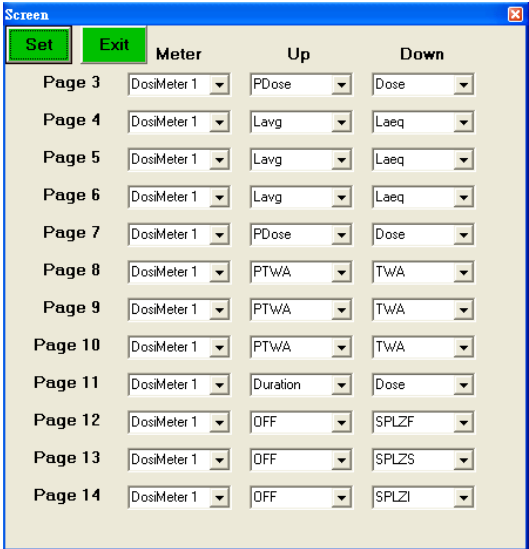


9. Screen Setting

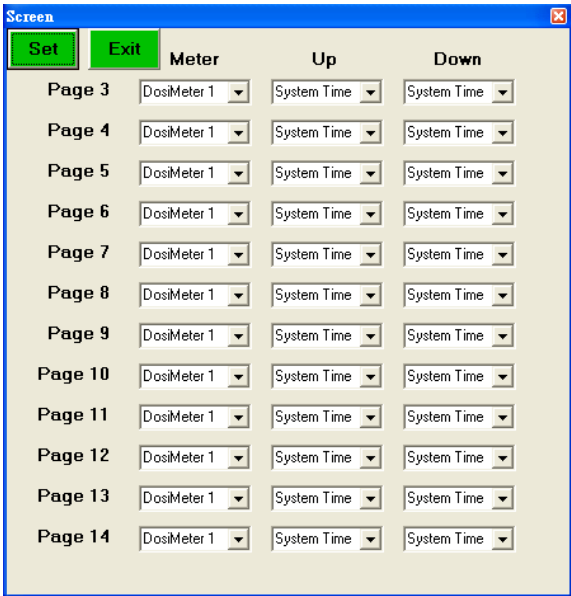


Click Button.

Device Screen Setting Get OK.



Device Screen Setting Get fail.



Click Button. Show



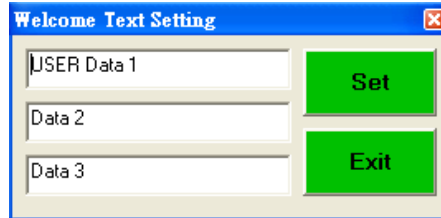
is set OK.



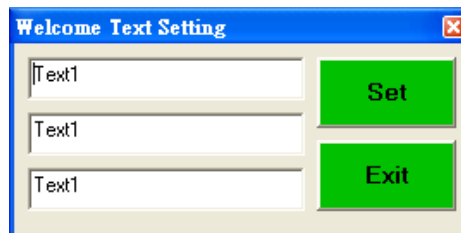
## 10. Welcome Text Setting

Click  Button.

Device Welcome Text setting Get OK.

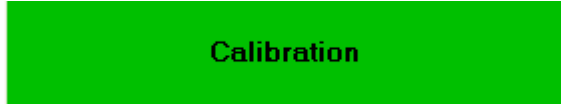


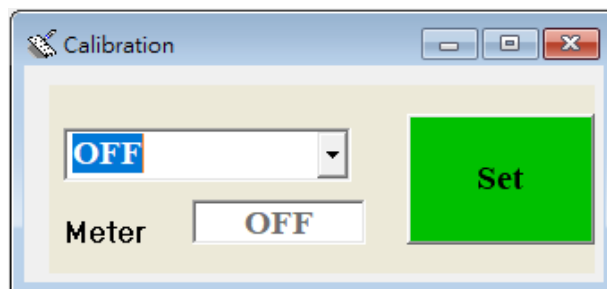
Device Welcome Text setting Get fail.





Click  Button. Show  is set OK.

## 11. Calibration Setting

Click  Button.



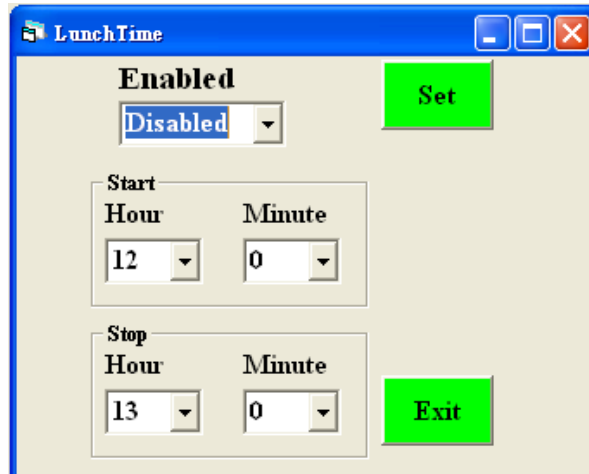
Click  Button. Show  is set OK.

## 12. Lunch Time Setting



Click Button.

Device Get Lunch Time OK



Click Button. Show  is set OK.

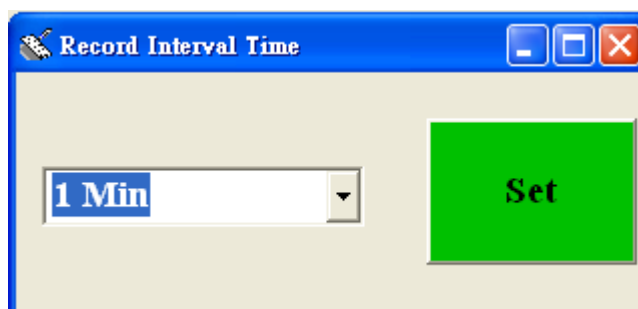


## 13. Record Interval Time Setting



Click Button.


Device Get Interval Time OK

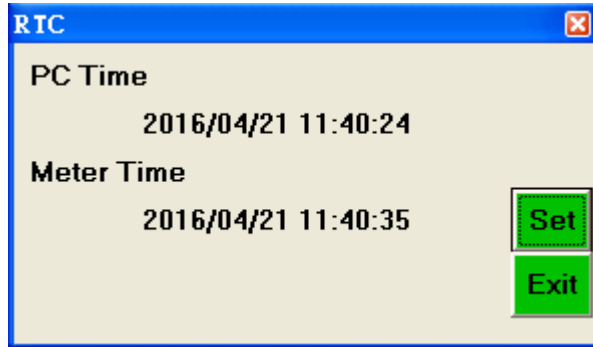




Click Button. Show  is set OK.

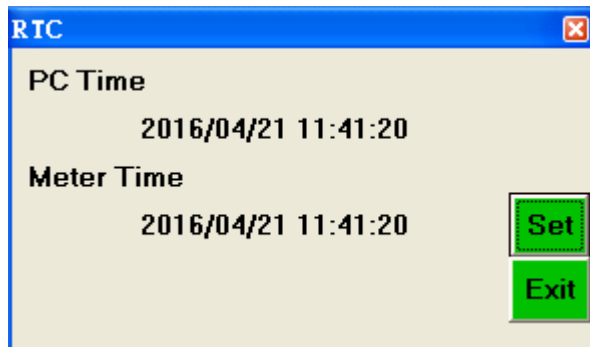


- **RTC ( Real Time Clock)**

Click  on the **Menu Bar** to set the meter time to PC system time.



Click  Button. Show  is set OK.



- **Read SD Card**



Click  on the **Menu Bar** to Read SD card

Memory		
<b>Total Size</b>		
<b>6101</b>		
<b>Remain Size</b>		
<b>5077</b>		
<b>Load Complete</b>		
No.s	Date/Time	Index
1	2018/02/09 10:55:21	1
2	2018/02/09 11:12:50	2
3	2018/02/09 11:15:31	3
4	2018/02/09 11:18:22	4
5	2018/02/09 11:23:27	5
6	2018/02/09 11:51:10	6
7	2018/02/09 11:51:33	7
8	2018/02/09 11:51:59	8
9	2018/02/09 11:52:25	9
10	2018/02/09 11:53:20	10
11	2018/02/09 11:54:08	11
12	2018/02/09 11:55:48	12
13	2018/03/13 16:08:59	13
14	2018/03/14 16:58:32	14

Click on a SET number to view the set's details.

Panel V10.06 2021-08-17.01 - [DataList]

RTC Memory Setting

Lcd contrast

Lcd APO

Pause

LED Alarm

Dosimeter

Auto Lock Keypad

Auto Scroll Screens

Time

Screen

Input Text

Calibration

LunchTime

Record Interval Time

Clear Memory

Other Option

Language

Help

**Memory**

Total Size 6101

Remain Size 5969

Load Complete


No.s	Date/Time	Index
1	2016/10/03 20:19:23	1
2	2016/10/03 20:29:43	2
3	2016/10/03 20:35:03	3

**HeaderItem**

	D1	D2	D3
Start Date/Time	2016/10/04 12:58:27	2016/10/04 12:58:27	2016/10/04 12:58:27
Stop Date/Time	2016/10/04 13:44:46	2016/10/04 13:44:46	2016/10/04 13:44:46
Threshold	90 dB	90 dB	90 dB
Criterion	90 dB	90 dB	90 dB
Exchange Rate	5 dB	5 dB	5 dB
Exceedance Level	105 dB	105 dB	105 dB
Record Interval Time	1 Min	1 Min	1 Min
Record Total Sets	47	47	47
PAV Duration	00:00:00	00:00:00	00:00:00
Duration	00:45:45	00:45:45	00:45:45
LAS > dB	(>105) 00:00:55	(>105) 00:00:00	(>105) 00:00:00
Exceed StopTime	00:45:45	00:00:00	00:00:00
Dose	7.9 %	0.0 %	0.0 %
PDose	82.9 %	0.0 %	0.0 %
TWA	71.6 dB	0.0 dB	0.0 dB
PTWA	88.6 dB	0.0 dB	0.0 dB
LAVG	88.6 dB	0.0 dB	0.0 dB
LEPj	86.9 dB	0.0 dB	0.0 dB
PLEPj	97.1 dB	0.0 dB	0.0 dB
LAeq	97.1 dB	0.0 dB	0.0 dB
LCEQ	104.8 dB	0.0 dB	0.0 dB
LZeq	109.1 dB	0.0 dB	0.0 dB
LAE	131.5 dB	0.0 dB	0.0 dB
LCE	139.2 dB	0.0 dB	0.0 dB
LZE	143.5 dB	0.0 dB	0.0 dB
EA	1.583 Pa <sup>2</sup> /h	0.000 Pa <sup>2</sup> /h	0.000 Pa <sup>2</sup> /h

No.s	Date/Time	LAVG	LEQ	LCFK	L2PK
1	2016/10/04 12:58:27	87.7 dB	89.2 dB	133.8 dB	135.8 dB
2	2016/10/04 13:00:27	89.7 dB	91.6 dB	137.4 dB	139.8 dB
3	2016/10/04 13:01:27	90.0 dB	91.5 dB	137.5 dB	139.9 dB
4	2016/10/04 13:02:27	97.4 dB	102.0 dB	146.6 dB	147.1 dB
5	2016/10/04 13:03:27	88.6 dB	90.3 dB	145.1 dB	146.3 dB
6	2016/10/04 13:04:27	91.1 dB	96.7 dB	145.1 dB	146.1 dB
7	2016/10/04 13:05:27	81.8 dB	85.3 dB	138.4 dB	140.3 dB
8	2016/10/04 13:06:27	104.9 dB	108.4 dB	147.2 dB	147.2 dB
9	2016/10/04 13:07:27	101.4 dB	105.6 dB	147.1 dB	147.2 dB
10	2016/10/04 13:08:27	94.6 dB	96.7 dB	144.3 dB	145.1 dB
11	2016/10/04 13:09:27	94.1 dB	95.5 dB	141.7 dB	142.6 dB
12	2016/10/04 13:10:27	97.2 dB	98.6 dB	146.5 dB	147.1 dB
13	2016/10/04 13:11:27	91.9 dB	100.6 dB	146.7 dB	147.1 dB
14	2016/10/04 13:12:27	76.6 dB	82.2 dB	128.1 dB	130.5 dB
15	2016/10/04 13:13:27	51.6 dB	--dB	115.7 dB	116.6 dB
16	2016/10/04 13:14:27	--dB	--dB	82.9 dB	88.1 dB
17	2016/10/04 13:15:27	--dB	--dB	95.9 dB	98.8 dB
18	2016/10/04 13:16:27	--dB	--dB	86.6 dB	92.2 dB
19	2016/10/04 13:17:27	--dB	--dB	86.1 dB	87.6 dB
20	2016/10/04 13:18:27	92.0 dB	94.1 dB	139.8 dB	142.6 dB
21	2016/10/04 13:19:27	81.3 dB	85.2 dB	131.0 dB	132.6 dB
22	2016/10/04 13:20:27	71.3 dB	77.0 dB	122.3 dB	124.5 dB
23	2016/10/04 13:21:27	80.0 dB	88.0 dB	141.1 dB	142.9 dB
24	2016/10/04 13:22:27	--dB	--dB	111.9 dB	112.3 dB
25	2016/10/04 13:23:27	--dB	--dB	90.1 dB	91.9 dB
26	2016/10/04 13:24:27	--dB	--dB	89.0 dB	90.2 dB
27	2016/10/04 13:25:27	87.4 dB	89.4 dB	139.0 dB	142.0 dB

Connection COM 15 2022/02/11 10:50:00

Click  button to Export PDF File.

## Edit Download Data

Step 1 Select the data you want to delete

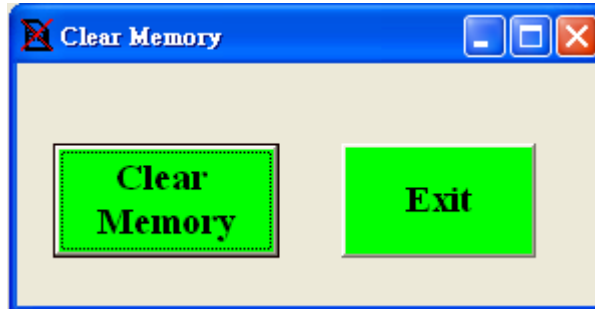
	D1	D2	D3	No.s	Date/Time	LAVG	LEQ	LCPK	LZPK
Start Date/Time	2020/03/16 11:16:49	2020/03/16 11:16:49	2020/03/16 11:16:49	1	2020/03/16 11:17:49	89.0 dB	95.8 dB	146.8 dB	147.2 dB
Stop Date/Time	2020/03/16 13:26:08	2020/03/16 13:26:08	2020/03/16 13:26:08	2	2020/03/16 11:18:49	98.9 dB	100.9 dB	146.6 dB	147.0 dB
Threshold	80 dB	80 dB	90 dB	3	2020/03/16 11:19:49	98.4 dB	101.1 dB	144.2 dB	145.9 dB
Criterion	90 dB	90 dB	90 dB	4	2020/03/16 11:20:49	81.9 dB	89.1 dB	135.9 dB	136.9 dB
Exchange Rate	5 dB	5 dB	5 dB	5	2020/03/16 11:21:49	86.3 dB	92.3 dB	140.2 dB	141.0 dB
Exceedance Level	105 dB	105 dB	105 dB	6	2020/03/16 11:22:49	85.8 dB	91.7 dB	140.6 dB	142.3 dB
Record Interval Time	1 Min	1 Min	1 Min	7	2020/03/16 11:23:49	101.0 dB	105.9 dB	146.8 dB	147.2 dB
Record Total Sets	130	130	130	8	2020/03/16 11:24:49	80.0 dB	87.3 dB	136.1 dB	137.3 dB
Pw Duration	08:00:00	08:00:00	08:00:00	9	2020/03/16 11:25:49	103.0 dB	107.6 dB	146.8 dB	147.2 dB
Duration	01:39:09	01:39:09	01:39:09	10	2020/03/16 11:26:49	108.2 dB	110.0 dB	143.1 dB	145.8 dB
LAS > dB	(>105)_01:23:05	(>105)_01:23:05	(>105)_01:23:05	11	2020/03/16 11:27:49	113.6 dB	113.6 dB	117.3 dB	117.3 dB
Exceed StopTime	01:39:09	01:39:09	01:39:09	12	2020/03/16 11:28:49	113.6 dB	113.6 dB	117.5 dB	117.5 dB
Dose	467.7 %	467.7 %	467.7 %	13	2020/03/16 11:29:49	113.6 dB	113.6 dB	117.7 dB	117.8 dB
PDose	2264.5 %	2264.5 %	2264.2 %	14	2020/03/16 11:30:49	113.6 dB	113.6 dB	118.1 dB	118.3 dB
TWA	101.1 dB	101.1 dB	101.1 dB	15	2020/03/16 11:31:49	113.6 dB	113.6 dB	117.5 dB	117.5 dB
PTWA	112.5 dB	112.5 dB	112.5 dB	16	2020/03/16 11:32:49	113.6 dB	113.6 dB	117.5 dB	117.6 dB
LAVG	112.5 dB	112.5 dB	112.5 dB	17	2020/03/16 11:33:49	113.6 dB	113.6 dB	117.2 dB	117.3 dB
LEPd	106.1 dB	106.1 dB	106.1 dB	18	2020/03/16 11:34:49	113.6 dB	113.6 dB	117.3 dB	117.5 dB
PLEPd	112.9 dB	112.9 dB	112.9 dB	19	2020/03/16 11:35:49	113.6 dB	113.6 dB	117.2 dB	117.6 dB
LAEPd	112.9 dB	112.9 dB	112.9 dB	20	2020/03/16 11:36:49	113.6 dB	113.6 dB	117.6 dB	117.7 dB
LCEQ	112.9 dB	112.9 dB	112.9 dB	21	2020/03/16 11:37:49	113.6 dB	113.6 dB	117.6 dB	117.6 dB
LZEPd	113.0 dB	113.0 dB	113.0 dB	22	2020/03/16 11:38:49	113.6 dB	113.6 dB	117.2 dB	117.3 dB
LAE	150.7 dB	150.7 dB	150.7 dB	23	2020/03/16 11:39:49	113.6 dB	113.6 dB	117.3 dB	117.5 dB
LCE	150.7 dB	150.7 dB	150.7 dB	24	2020/03/16 11:40:49	113.6 dB	113.6 dB	117.2 dB	117.3 dB
LZE	150.8 dB	150.8 dB	150.8 dB	25	2020/03/16 11:41:49	113.6 dB	113.6 dB	117.3 dB	117.6 dB
EA	130.922 Pa*2h	130.922 Pa*2h	130.922 Pa*2h	26	2020/03/16 11:42:49	113.6 dB	113.6 dB	117.4 dB	117.6 dB


Step 2 Press the “Backspace” button

	D1	D3	No.s	Date/Time	LAVG	LEQ	LCPK	LZPK
Start Date/Time	2020/03/16 11:16:49	2020/03/16 11:16:49	1	2020/03/16 11:17:49	89.0 dB	95.8 dB	146.8 dB	147.2 dB
Stop Date/Time	2020/03/16 13:26:08	2020/03/16 13:26:08	2	2020/03/16 11:18:49	98.9 dB	100.9 dB	146.6 dB	147.0 dB
Threshold	80 dB	90 dB	3	2020/03/16 11:19:49	98.4 dB	101.1 dB	144.2 dB	145.9 dB
Criterion	90 dB	90 dB	4	2020/03/16 11:20:49	81.9 dB	89.1 dB	135.9 dB	136.9 dB
Exchange Rate	5 dB	5 dB	5	2020/03/16 11:21:49	86.3 dB	92.3 dB	140.2 dB	141.0 dB
Exceedance Level	105 dB	105 dB	6	2020/03/16 11:22:49	85.8 dB	91.7 dB	140.6 dB	142.3 dB
Record Interval Time	1 Min	1 Min	7	2020/03/16 11:23:49	101.0 dB	105.9 dB	146.8 dB	147.2 dB
Record Total Sets	130	130	8	2020/03/16 11:24:49	80.0 dB	87.3 dB	136.1 dB	137.3 dB
Pw Duration	08:00:00	08:00:00	9	2020/03/16 11:25:49	103.0 dB	107.6 dB	146.8 dB	147.2 dB
Duration	01:39:09	01:39:09	10	2020/03/16 11:26:49	108.2 dB	110.0 dB	143.1 dB	145.8 dB
LAS > dB	(>105)_01:23:05	(>105)_01:23:05	11	2020/03/16 11:27:49	113.6 dB	113.6 dB	117.3 dB	117.3 dB
Exceed StopTime	01:39:09	01:39:09	12	2020/03/16 11:28:49	113.6 dB	113.6 dB	117.5 dB	117.5 dB
Dose	467.7 %	467.7 %	16	2020/03/16 11:32:49	113.6 dB	113.6 dB	117.5 dB	117.6 dB
PDose	2264.5 %	2264.2 %	17	2020/03/16 11:33:49	113.6 dB	113.6 dB	117.2 dB	117.3 dB
TWA	101.1 dB	101.1 dB	18	2020/03/16 11:34:49	113.6 dB	113.6 dB	117.3 dB	117.5 dB
PTWA	112.5 dB	112.5 dB	19	2020/03/16 11:35:49	113.6 dB	113.6 dB	117.2 dB	117.6 dB
LAVG	112.5 dB	112.5 dB	20	2020/03/16 11:36:49	113.6 dB	113.6 dB	117.6 dB	117.7 dB
LEPd	106.1 dB	106.1 dB	21	2020/03/16 11:37:49	113.6 dB	113.6 dB	117.6 dB	117.6 dB
PLEPd	112.9 dB	112.9 dB	22	2020/03/16 11:38:49	113.6 dB	113.6 dB	117.2 dB	117.3 dB
LAEPd	112.9 dB	112.9 dB	23	2020/03/16 11:39:49	113.6 dB	113.6 dB	117.3 dB	117.5 dB
LCEQ	112.9 dB	112.9 dB	24	2020/03/16 11:40:49	113.6 dB	113.6 dB	117.2 dB	117.3 dB
LZEPd	113.0 dB	113.0 dB	25	2020/03/16 11:41:49	113.6 dB	113.6 dB	117.3 dB	117.6 dB
LAE	150.7 dB	150.7 dB	26	2020/03/16 11:42:49	113.6 dB	113.6 dB	117.4 dB	117.6 dB
LCE	150.7 dB	150.7 dB	27	2020/03/16 11:43:49	113.6 dB	113.6 dB	118.1 dB	118.5 dB
LZE	150.8 dB	150.8 dB	28	2020/03/16 11:44:49	113.6 dB	113.6 dB	117.3 dB	117.4 dB
EA	130.922 Pa*2h	130.922 Pa*2h	29	2020/03/16 11:45:49	113.6 dB	113.6 dB	117.2 dB	117.6 dB

- **Delete SD Card File**

Click  on the **Menu Bar** to Erase SD card



Click  Button. Erase memory data.

- **Language**

Click  Button . Show

