

Temperature Datalogger Graph Software Help

Version 2.0, August 07, 2007

For additional information refer to the user guide included on the supplied program disk.

TABLE OF CONTENTS

Installing Graph Software.	2
Installing USB Driver.....	2
Running The Datalogger Graph Software.....	2
Menu Bar Description.....	3
LED Status Guide.....	7

1. INSTALLING GRAPH SOFTWARE

Install the supplied Windows PC Datalogger Software by placing the supplied program disk in the PC CD-ROM drive. If the installation program does not automatically open and provide on-screen prompts, double click the SETUP.EXE file included on the program disk. Follow the on-screen prompts to complete the installation. Before running the Datalogger software please connect the Logger to the PC and install the USB Driver software as described in the next section.

2. INSTALLING USB DRIVER

Plug the Logger into an available USB port on the PC. If this is the 1st time that the Logger is connected to the particular port on the PC, the following screen will appear:



Select the 'recommended' installation (make sure the program disk is still in the PC CD-ROM drive) and follow the on-screen prompts to complete the driver installation. If this is a repeat connect of the Logger to the USB port, the driver installation process will be automatically skipped.

3. RUNNING THE DATALOGGER SOFTWARE

With the Logger connected to the PC, Double click the Datalogger Graph icon to launch the program. The main software screen will appear with the MENU BAR icons described as below.

Notes: When the Logger is connected to the USB port, the battery inside the Data Logger is discharged at a higher rate than normal. To conserve battery life, do not leave the Logger connected to the USB port for a prolonged period of time

4. MENU BAR



From left to right the MENU BAR icons represent DATA DOWNLOAD, LOGGER SETUP, FILE OPEN, FILE SAVE-AS, FILE PRINT, VIEW ALL, and ZOOM. In addition, the FILE, VIEW, LINK, and HELP pull-down menus are available here. All will be described in the following paragraphs.

① LOGGER SETUP

Click on the computer icon on the menu bar (2nd from left) or select LOGGER SET from the LINK pull-down menu. The Setup window will appear as shown below; descriptions for each field in the Setup window are listed directly below the illustration:

- The CURRENT TIME field will automatically synchronize with the PC date and time setting
- The MANUAL and INSTANT select buttons allow the user to start data logging immediately when the Setup window is exited (INSTANT) or at a later time (MANUAL).
- The LOGGER NAME field allows the user to select a unique name for the logger
- The SAMPLE POINTS field instructs the logger to take a finite number of readings
- The SAMPLE RATE pull-down menu instructs the logger to log readings at a specific rate
- The LED Flash Cycle can be set by the user (the longer the time, the longer the battery life)
- The ALARM SETTINGS portion of the SETUP window allows the user to set HIGH and LOW temperature limits and disable the flashing of the Logger's LEDs thereby conserving battery energy

Click on the SETUP button to save changes. Press the DEFAULT button to set the Logger to factory default condition. Press the CANCEL button to abort the setup.

Notes: Any stored data will be permanently erased when Setup is finished. To enable you to save this data before it is lost, click Cancel and then you need to download data.

The battery will in all likelihood run out before logger will have finished specified sample points. Always ensure that the remaining charge in the battery is sufficient to last the complete duration of your logging

exercise. If in doubt, we recommend that you always install a fresh battery before logging critical data.

If INSTANT was selected in the SETUP window, the Logger begins logging at the instant the SETUP button is pressed. If MANUAL was selected, the Logger must be manually started by pressing and holding the Logger's yellow button for approx. 3 seconds or until the two LEDs on the Logger flash at the same time.

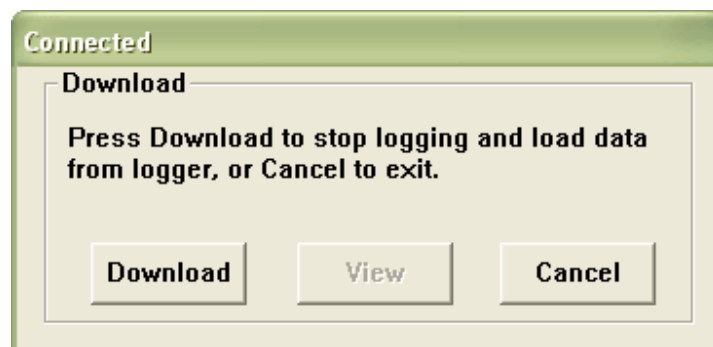
Logging will continue at the programmed sample rate until the number of readings (sample points) specified in the Setup window is reached.

The green LED flashes once per sample point and the red or yellow LED flashes when user programmed alarm limits are exceeded. For details, see LED status guide.

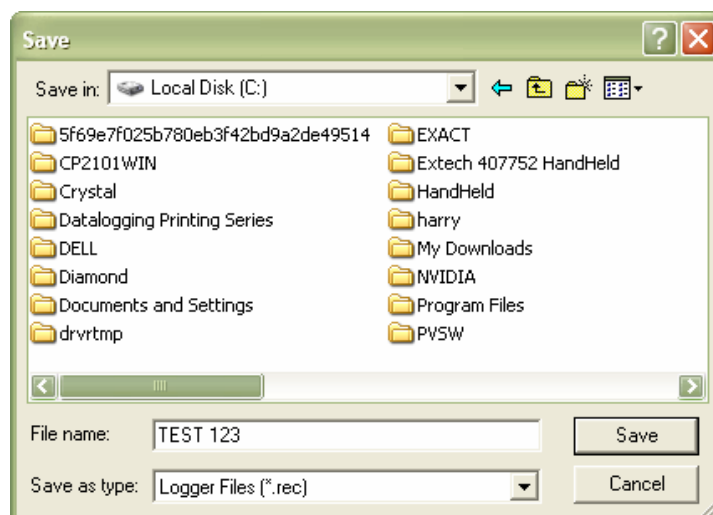
② DATA DOWNLOAD

To transfer the readings stored in the Logger to the PC:

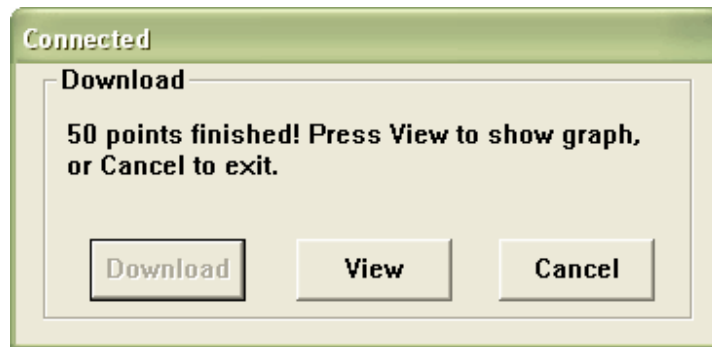
- A. Connect the Logger to the same USB port used when the Logger was initialized
- B. Open the Datalogger software program if it is not still running
- C. Click the Download icon (1st on the left) or select Data Download from the LINK pull-down menu
- D. The Window shown below will appear. Press DOWNLOAD to begin transferring readings



If readings are successfully transferred, the VIEW screen and the SAVE screen (both shown below) will appear. In the SAVE screen, name the file and save it to a convenient location. At a later time, the user can select SAVE-AS and save the data as an Excel, Text, or Bitmap file (explained in next section), however, the data in this case is saved as an .rec file for use in this program only.

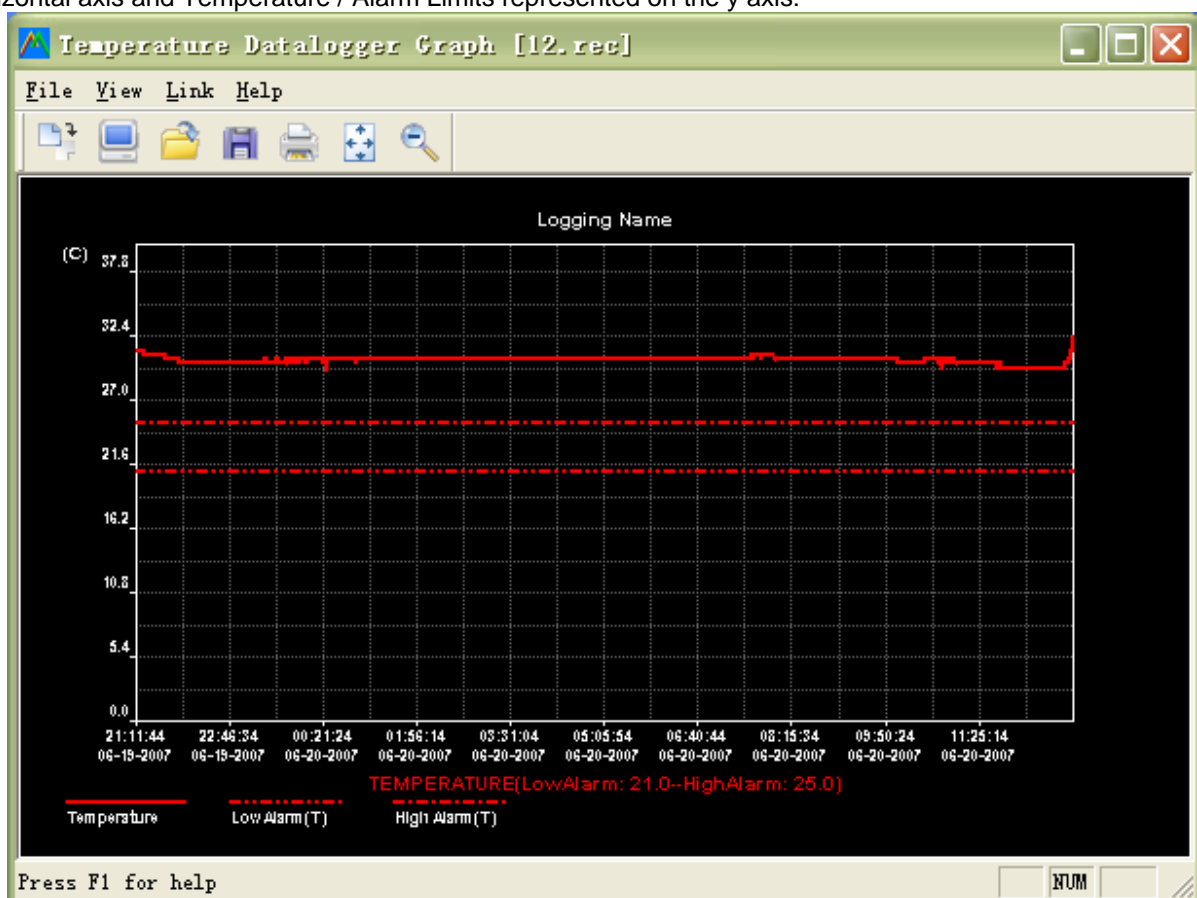


In the VIEW screen (below) press VIEW to see the data graphically. If there are no readings currently stored in the Logger, the program will let the user know via warning screen.



When VIEW is pressed, the Data Graph window appears

The Data Graph window presents the transferred data in x-y graph format with Date/Time represented on the horizontal axis and Temperature / Alarm Limits represented on the y axis:



To zoom in and zoom out data regions, there are several approaches, these are:

- 1) Use the mouse to click and drag a box around any data area to magnify the area selected.
- 2) Click on the zoom magnifier icon tool on the menu bar
- 3) Select VIEW ALL or ZOOM OUT from the VIEW pull-down menu.

In the example graph above, the Temperature is represented by the solid red line (the lines are known as 'traces'). The low and high alarm values for temperature are represented by the dashed red trace.

To customize the graph window select SHOW TRACES, BACKGROUND, GRID LINES, and MASK POINTS from the VIEW pull-down menu. These options provide the following features:

SHOW TRACES: Allows the user to select which data to view as a trace (Temperature & Alarms).

BACKGROUND: Select background color scheme.

GRID LINES: Add or remove grid lines from x and y axes.

MASK POINTS: Places dots on the traces for the actual data points, breaking up the continuous nature of a trace.

③ FILE OPEN, FILE SAVE-AS

To save the transferred data in a format other than the proprietary .rec format, click the SAVE AS icon from the menu bar (4th from right) or select SAVE AS from the FILE pull-down menu. The data can be saved in the following formats:

TEXT FILE (.txt)

EXCEL FILE (.xls)

BITMAP FILE (.bmp)

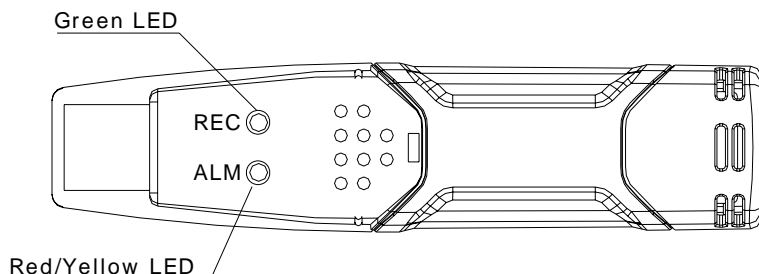
To open an existing data file for viewing on the data graph window, click on the FILE OPEN icon on the menu bar (3rd from left) or select FILE OPEN from the FILE pull-down menu. When prompted, select a .rec file saved earlier.



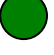





④ FILE PRINT

To print a data graph window to a line or network printer, click on the printer icon or select PRINT from the FILE pull-down menu. Note that color graph windows can be accurately printed on color printers.

Note : The Logger retains data in its internal memory until the user begins a new logging session. Starting a new logging session clears all of the logger's stored readings; be sure to save data before starting a new logging session.

5. LED STATUS GUIDE



LEDs	Meaning	Action
REC ALM  	No LEDs flash -No logging started Or -No battery fitted Or -Battery completely discharged	Fit battery Replace battery and download the data
REC ALM  	Green single flash every 10 sec. * -Logging, no alarm** Green double flash every 10 sec. * -Delayed start	To start, Hold the start button until Green and Yellow LED flash
REC ALM  	Red single flash every 10 sec. * -Logging, high alarm Red single flash every 60 sec. - Low Battery***	If logging, it will stop automatically. No data will be lost. Replace battery
REC ALM  	Yellow single flash every 10 sec. * -Logging, low alarm Yellow single flash every 60 sec. - Logger memory full	Download data

* To save power, the logger's LED flashing-cycle can be changed to 20s or 30s via the supplied software.

** To save power, alarm LEDs for temperature can be disabled via the supplied software.

***When the battery is low, all operations will be disabled automatically. NOTE: Logging automatically stops when the battery weakens (logged data will be retained). The supplied software is required to restart logging and to download logged data.