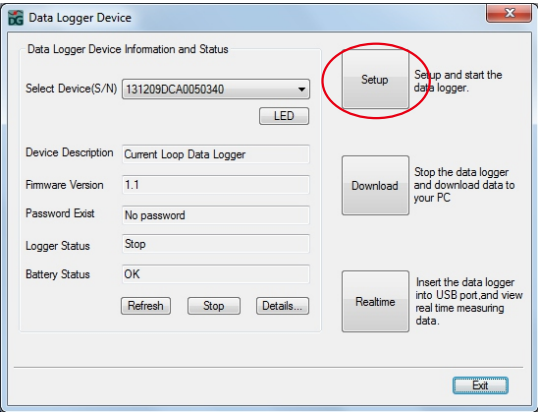


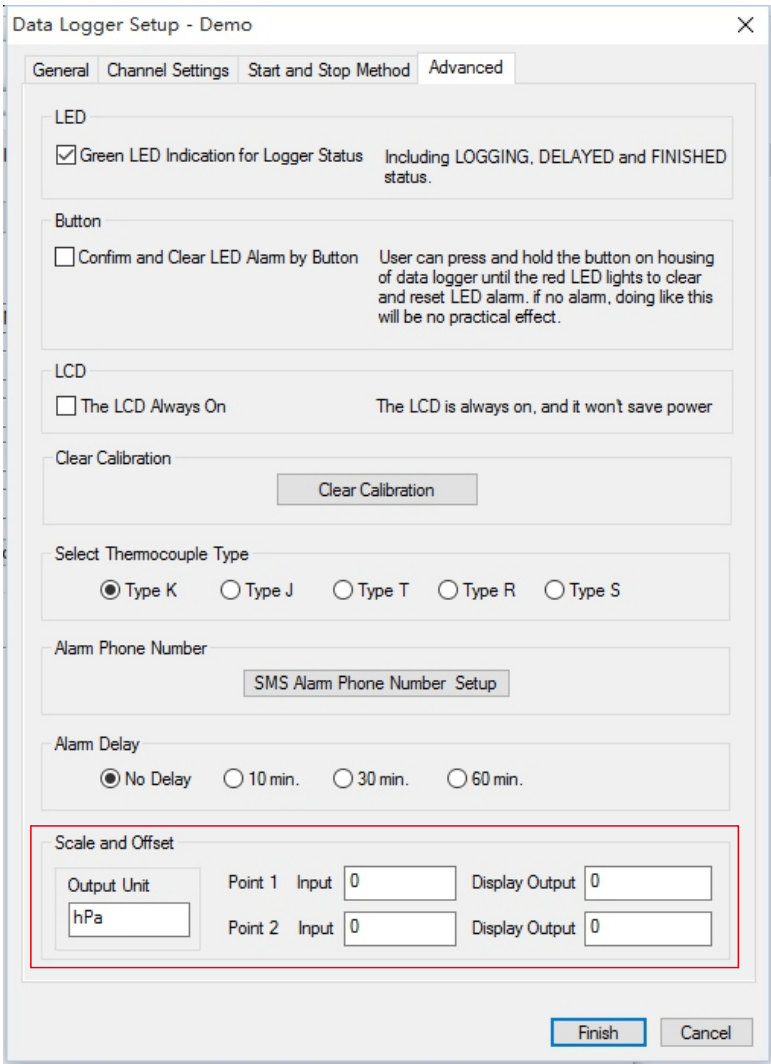
How to set scale and offset for 4~20mA or DC voltage readings?

For example, The measurement range of pressure transmitter is from 300hPa to 1100hPa, and it outputs from 4mA to 20mA. User can use the "Data Logger Graph" software to get the graph shown in **hPa**.

Step 1 Please see the "QUICK START GUIDE" (Included in the CD) to install the "Data Logger Graph" software and USB driver. Insert the data logger into PC's USB interface, and Start the "Data Logger Graph" software to setup.



Step 2 Click "Advanced" to set scale and offset as below.



Example to set the scale and offset:

Input the output unit symbol: hPa (be used for pressure)
if 4mA is equivalent to 300hPa, 20mA is equivalent 1100hPa:

Point 1 Input=4 Display Output=300
Point 2 Input=20 Display Output=1100