



# Installation instructions

PCE-SLM 10 Software



User manuals in various languages (français, italiano, español, português, nederlands, türk, polski, русский, 中文) can be found by using our product search on: [www.pce-instruments.com](http://www.pce-instruments.com)

Última modificación: 18 junio 2019  
v1.0



---

The software is available for Windows XP, Win7, Win8 and Win10.

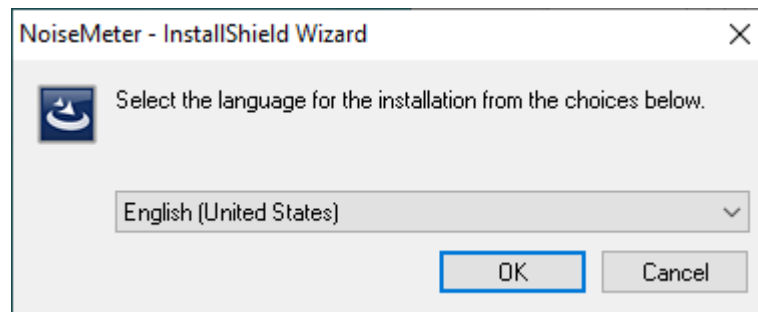
## Contents

I.	Software Installation .....	3
II.	Operating Instruction .....	7
III.	Common Errors and How to Solve .....	19

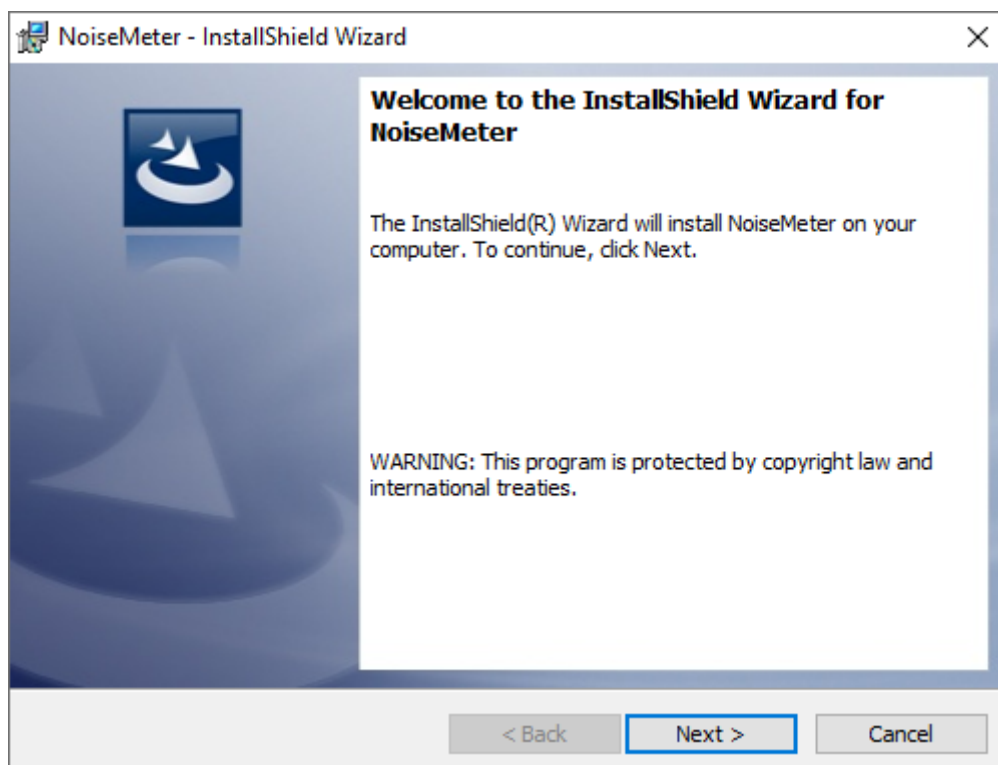
# I. Software Installation

Download compressed file and decompress. Folders contain installing version and portable version. Open the folder "NoiseMeter", and double click "NoiseMeter.exe" to run the software directly. Open the folder "Setup" and double click Setup.exe to install the software. Follow the steps as below:

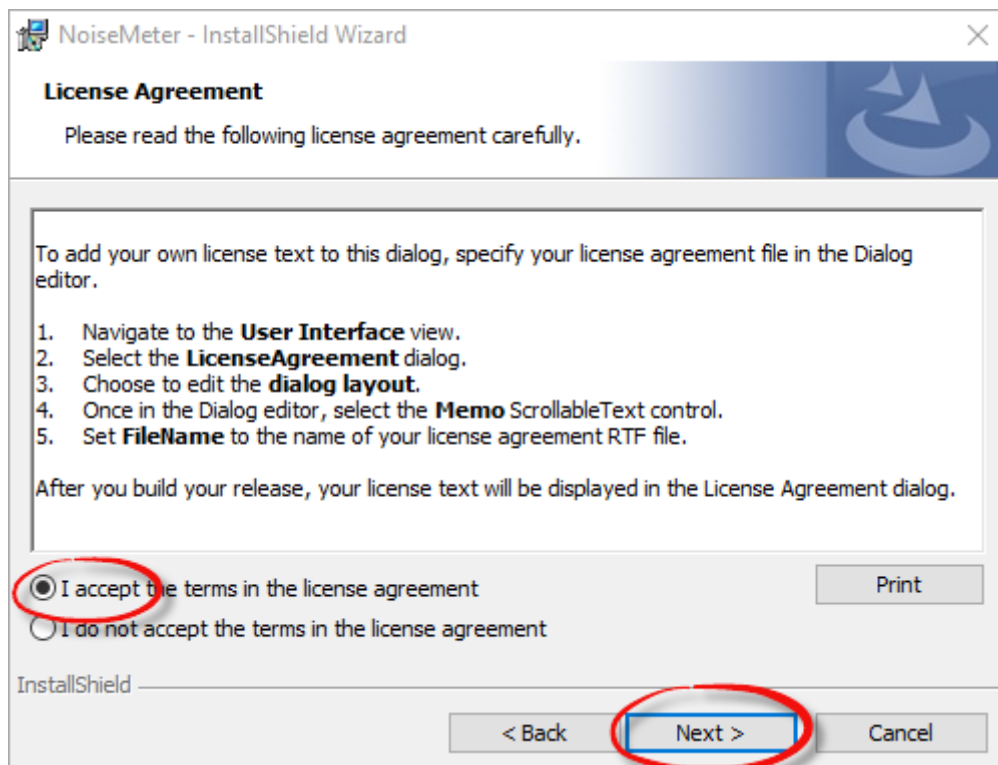
1. Choose installing Language and click OK.



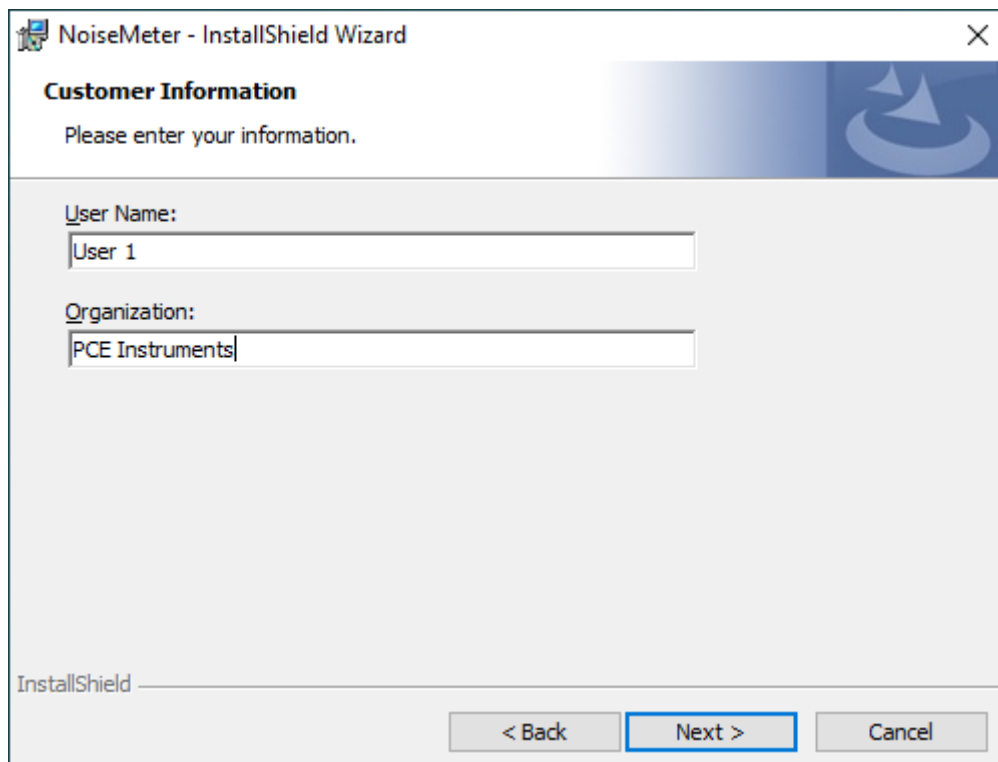
2. Click "next" for next movement.



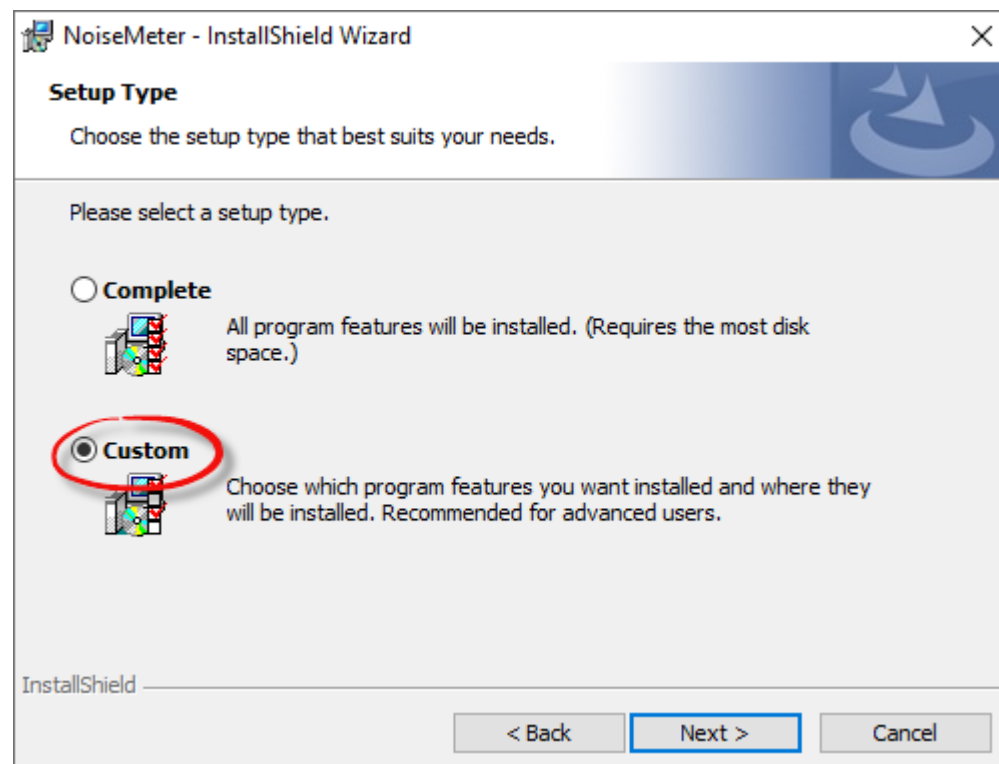
3. Select "I accept the terms in the license agreement" and click next



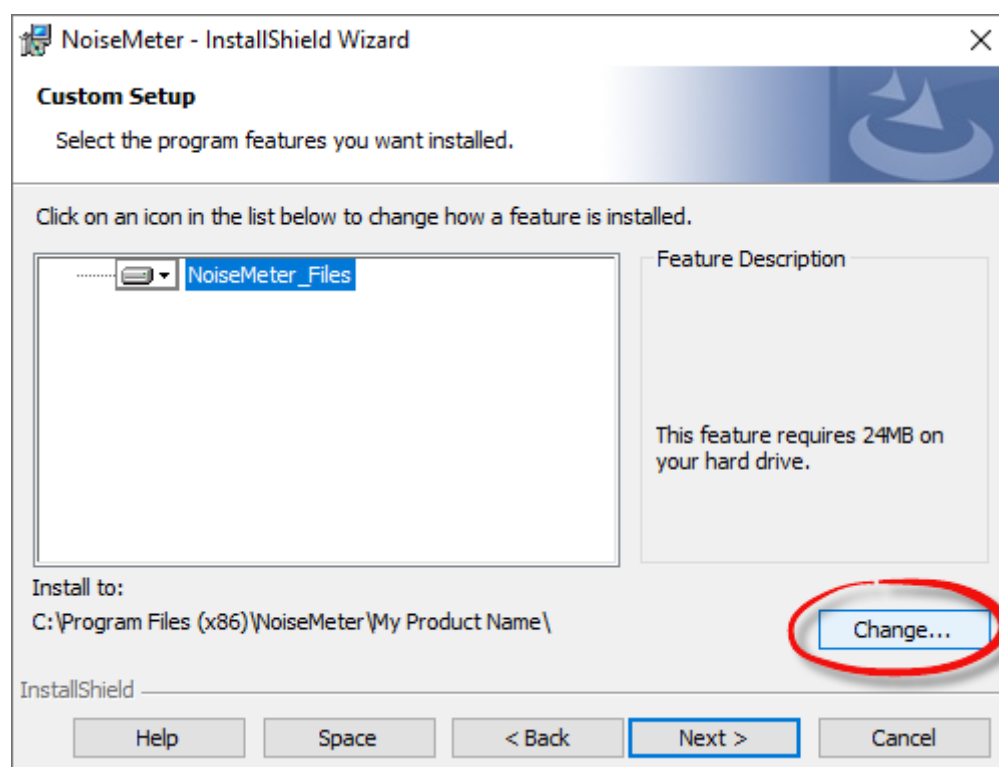
4. Fill in user information (optional)



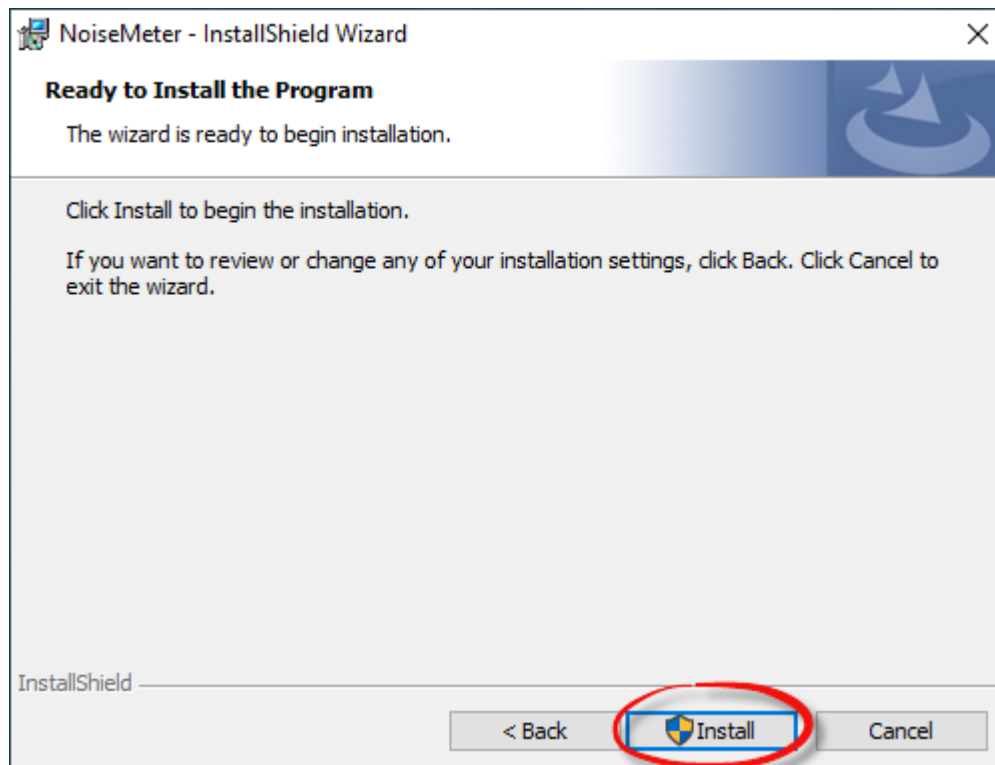
1. Choose Custom installation to select installation folder and click next



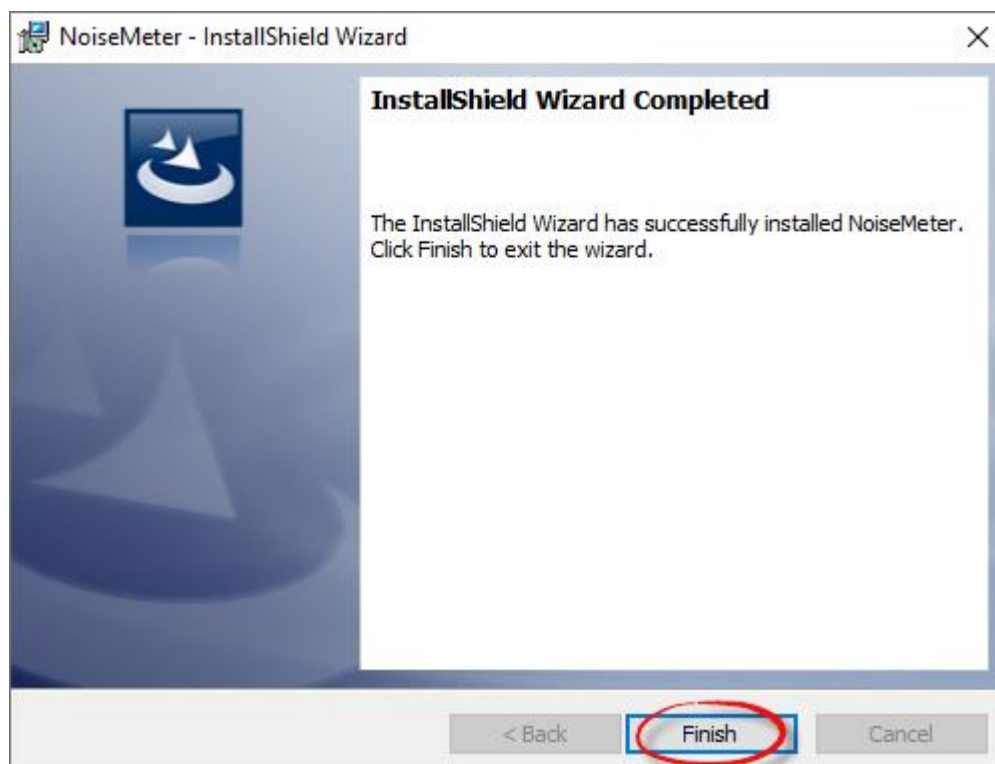
2. Set installing path. The default is disk C, click "Change" to revise the path and click next.



5. Click "Install"

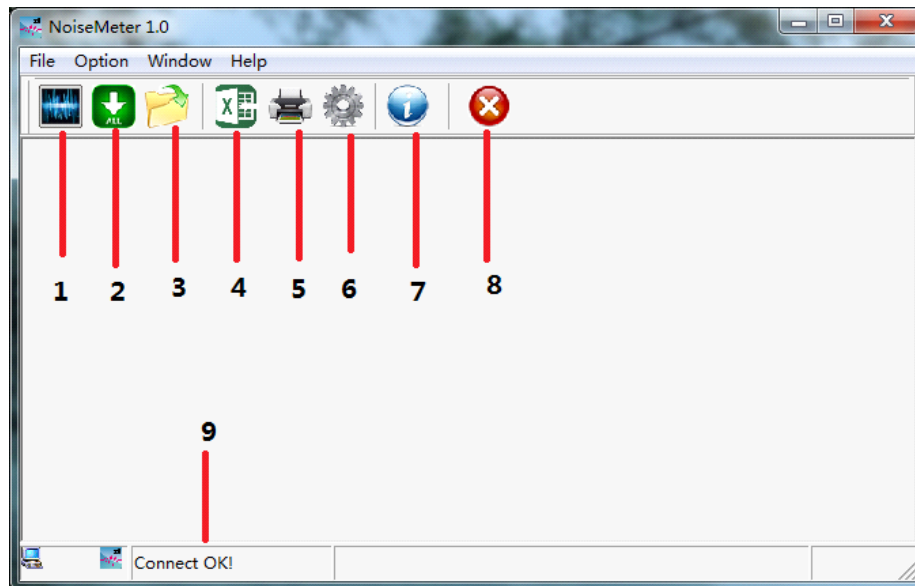


6. Click "Finish"



## II. Operating Instruction

### 1. Interface



1-Sampling

2-Record uploading

3-Open the file

4-Export to Excel

5-Printing

6-System setting

7-About us

8-Exit

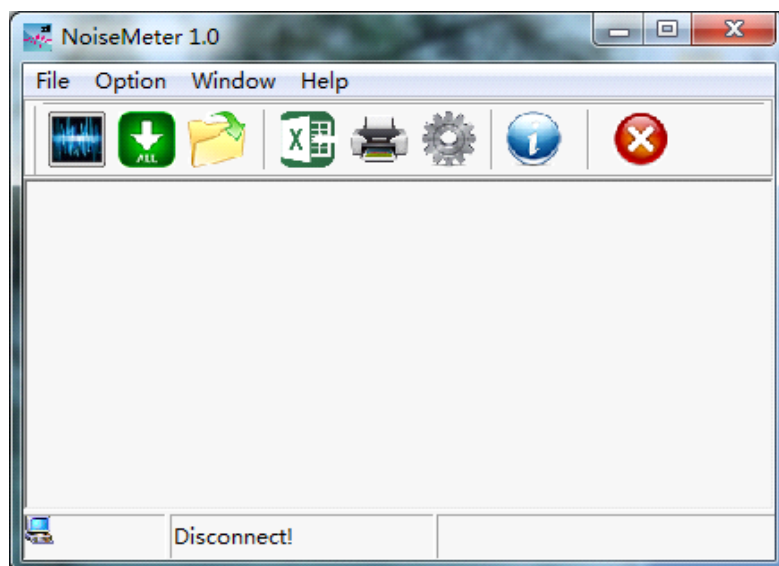
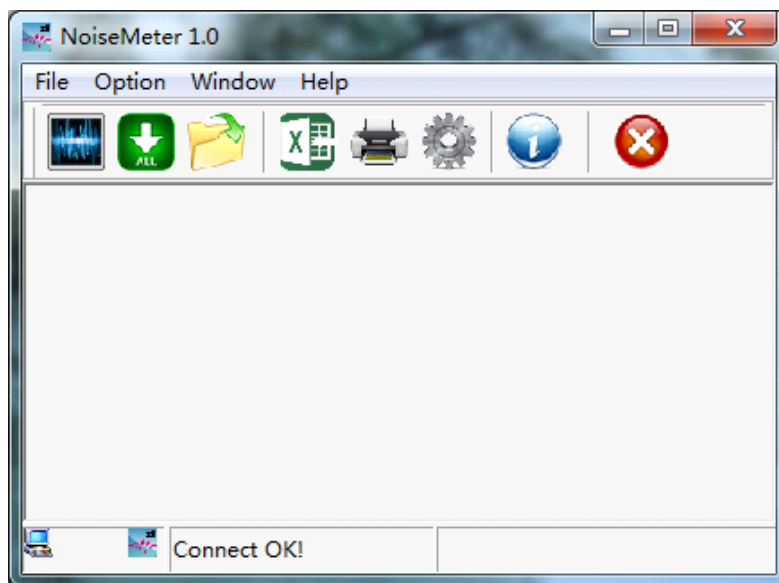
9-USB connecting

## 2. Connection to PC

Connect the meter to PC with USB cable. "Connect OK!" means OK; "Disconnect!" means failed.

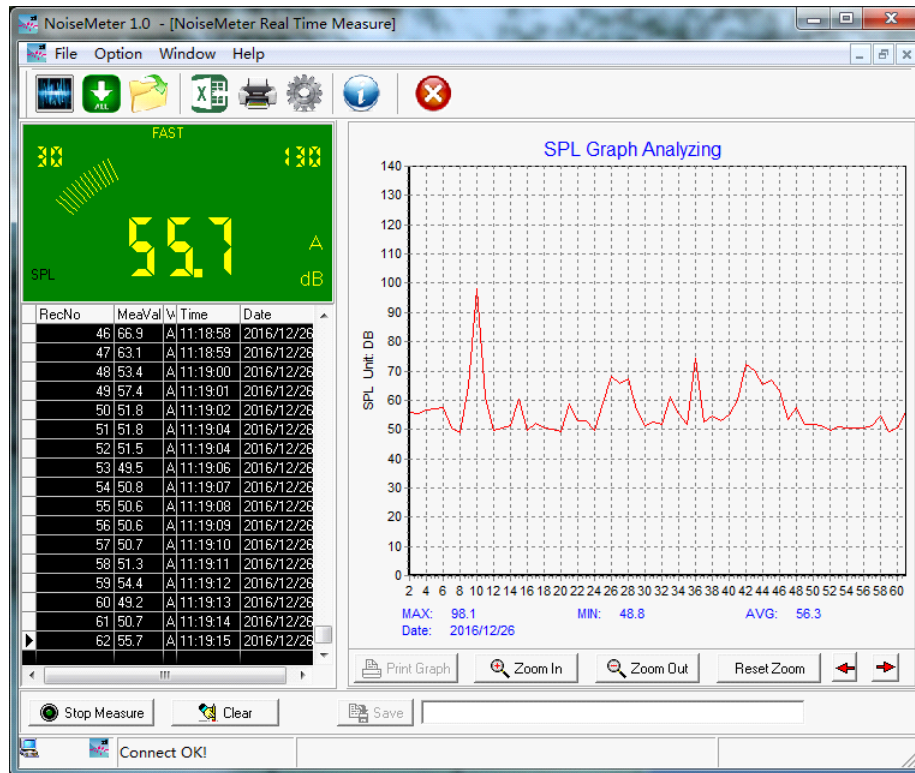
Please recheck as below steps when the device fails to connect with the computer.



- 1) USB cable is in good condition;
- 2) Computer insert is in good condition;
- 3) The USB insert of meter is in good condition.

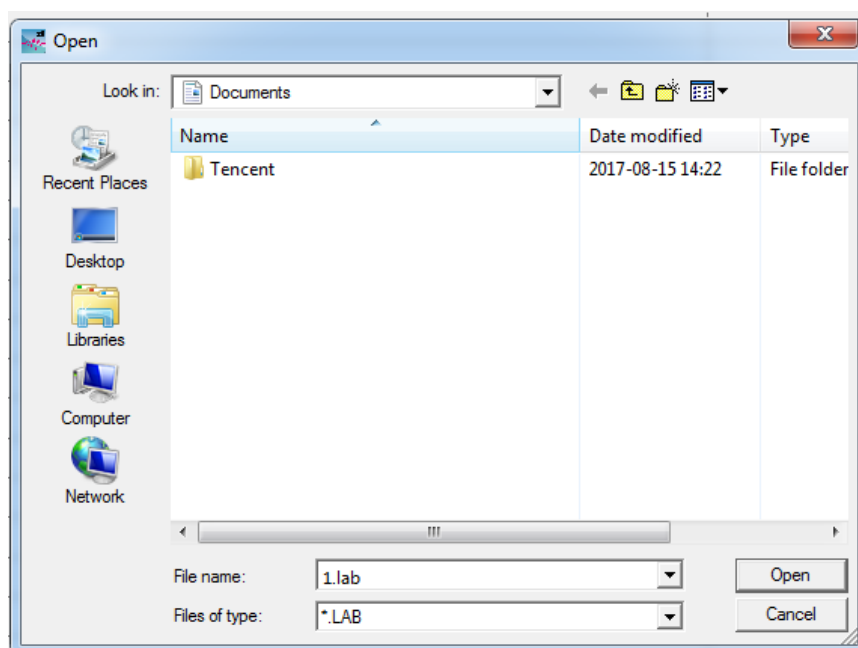


### 3. Real-time Measuring



Click  to real-time Measuring. Click  to start. Data will be updated every 1s.

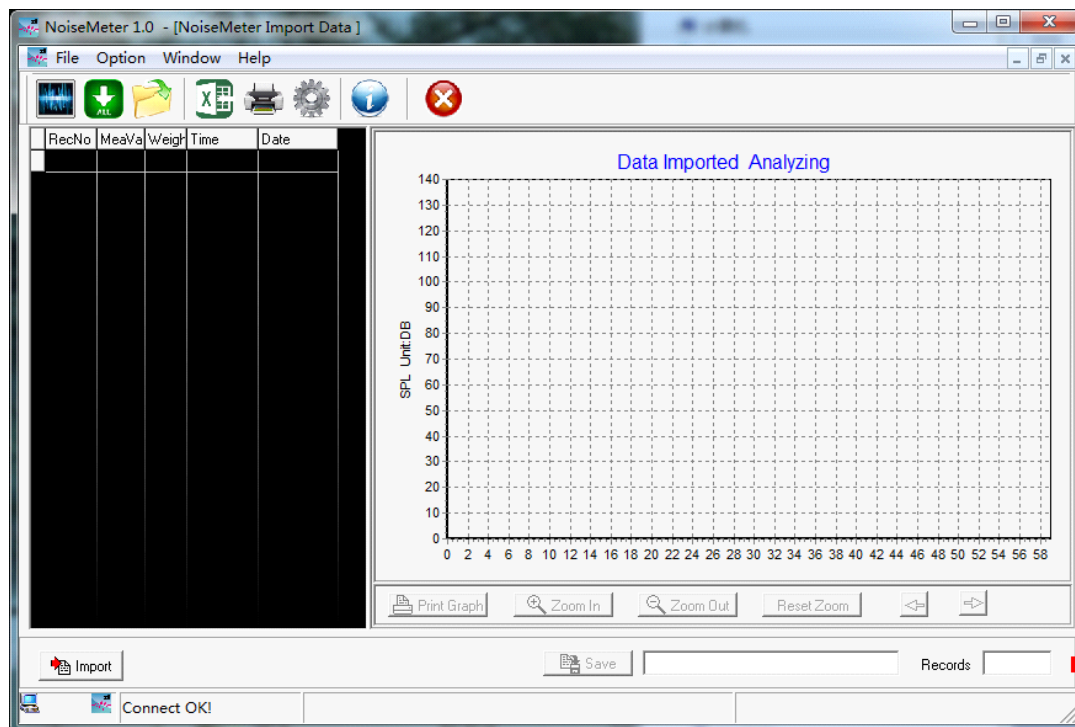


Click  to stop measuring, then click  to save data. All records will be saved as .lab file.

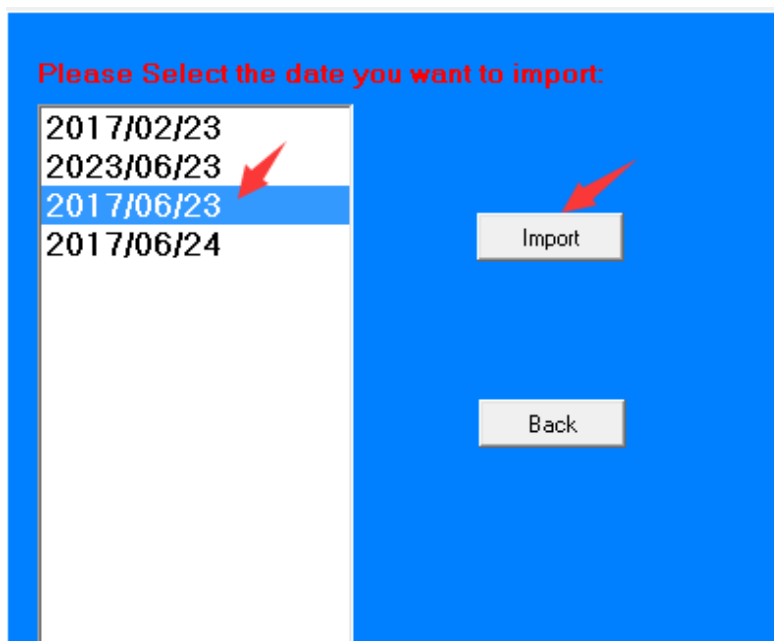


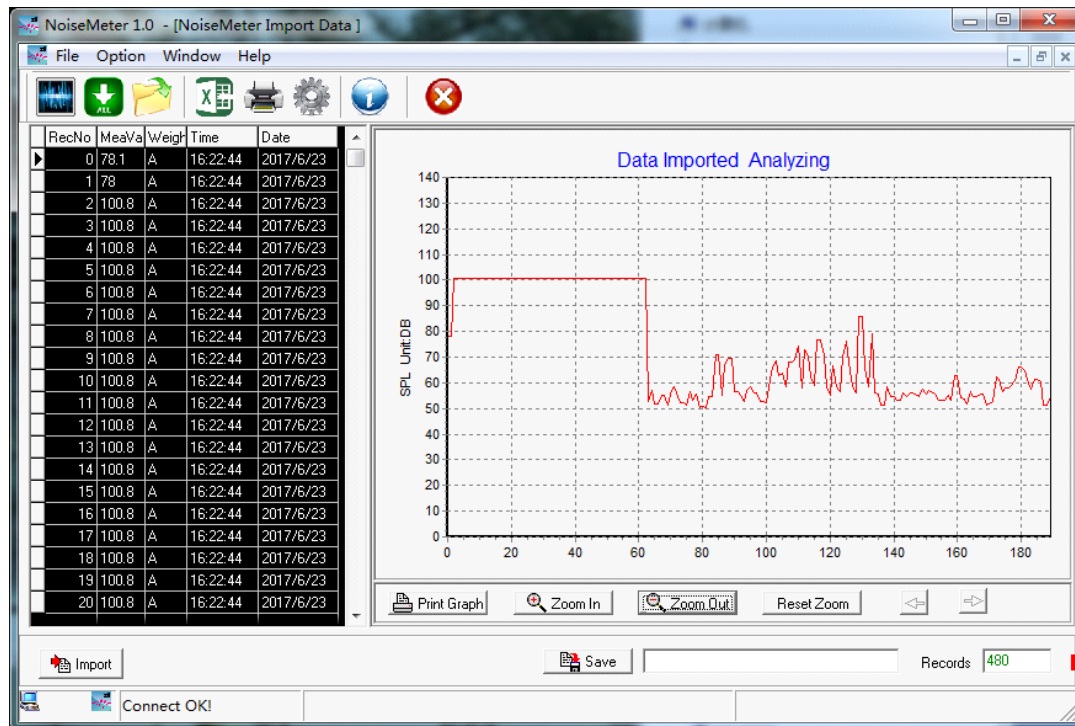
#### 4. Record uploading


Click  to records interface. Choose the month which you want to import and click  Import to upload the records.

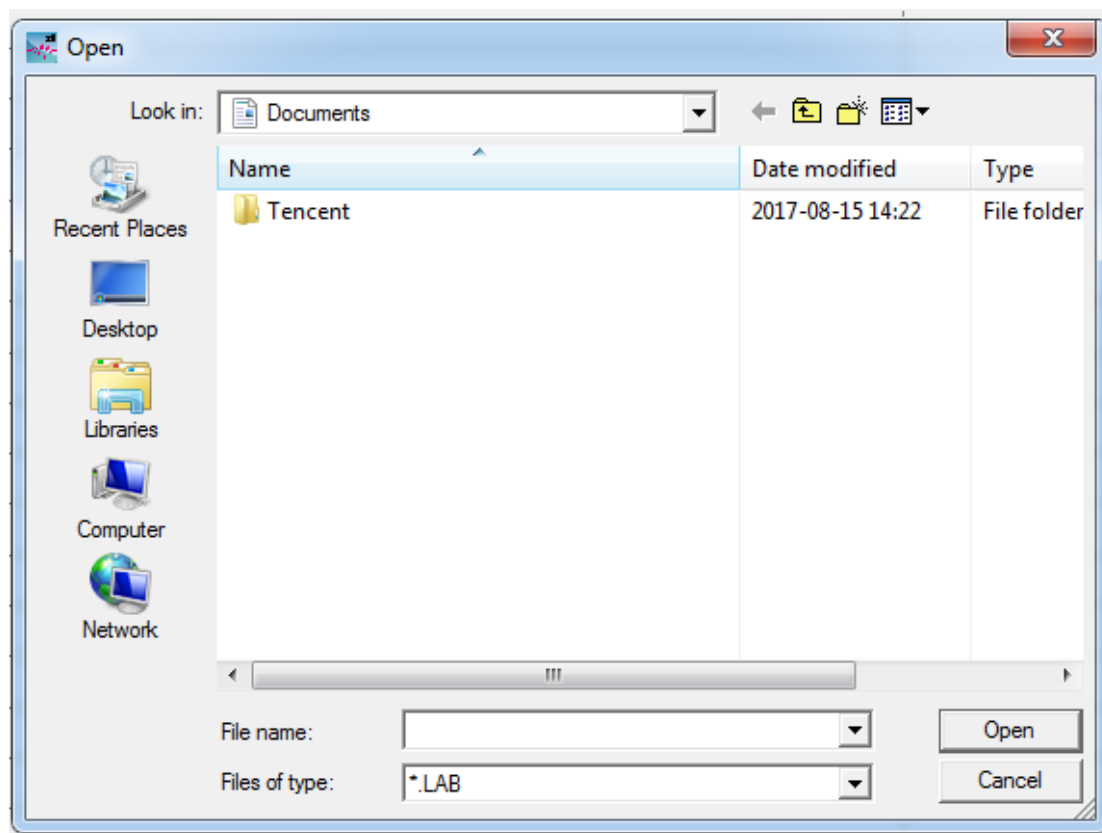


Choose the date and click Import.

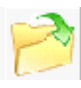


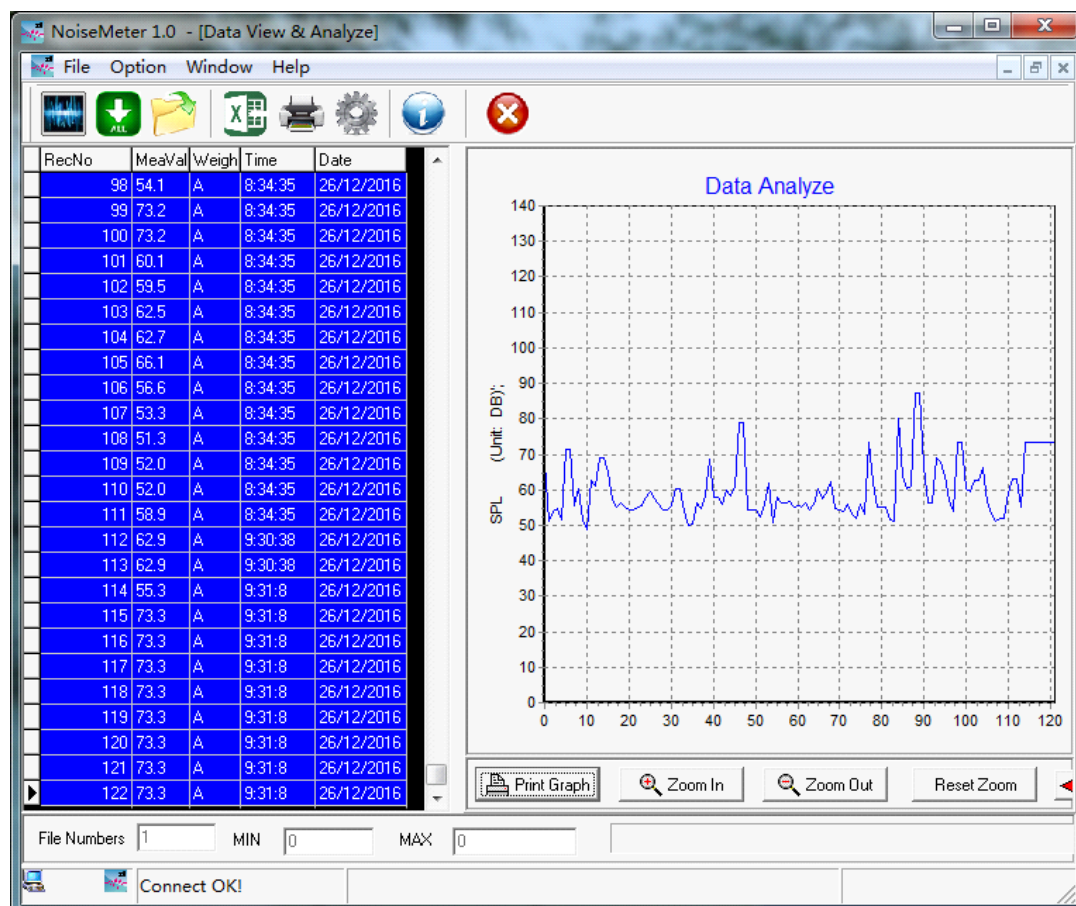
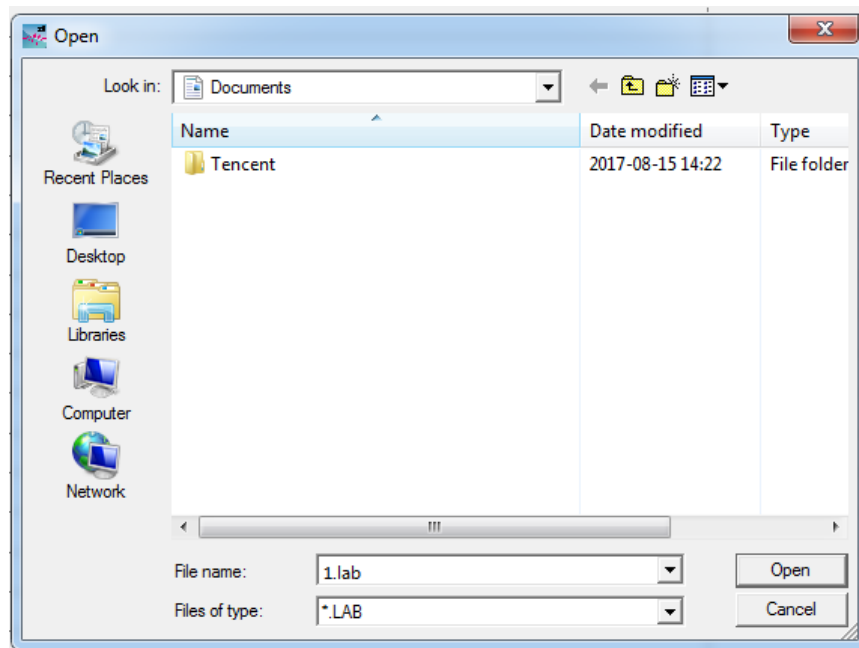


Click  Save to save the record in .lab files.



## 5. Open the file

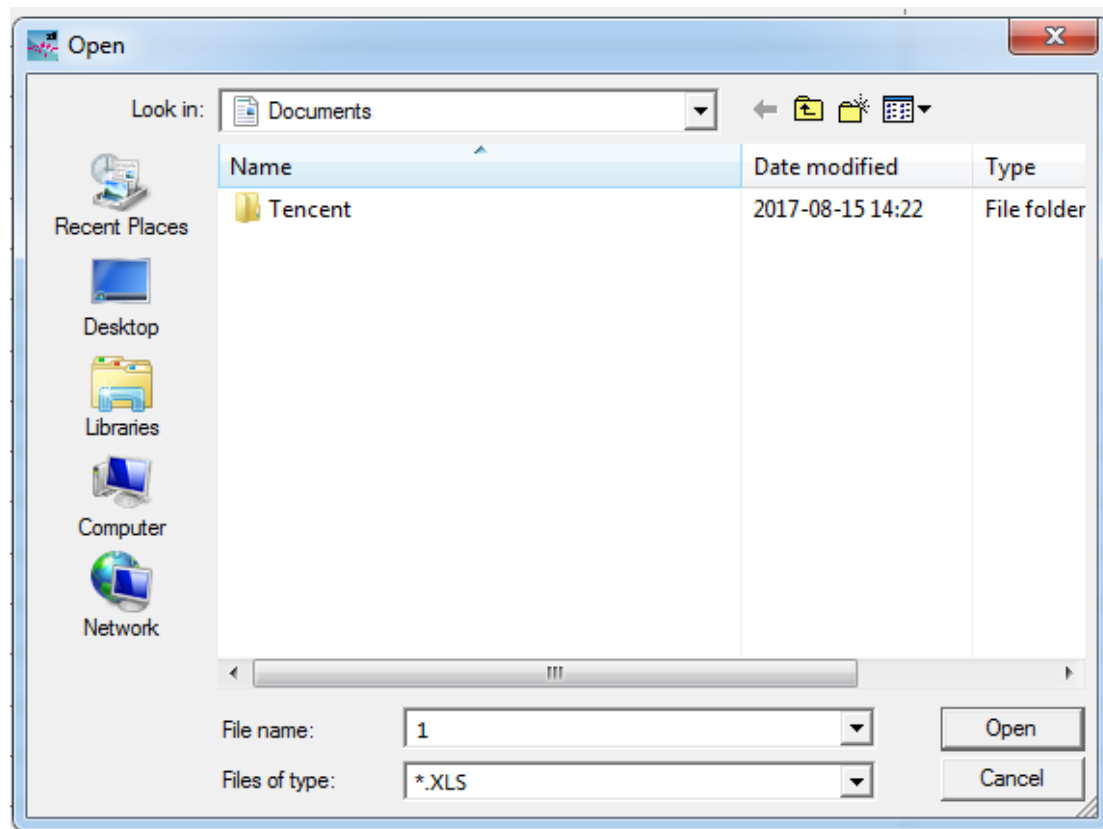
Click , find the previous records in .lab file and open it.



## 6. Export to Excel



Click  to export the data to Excel.

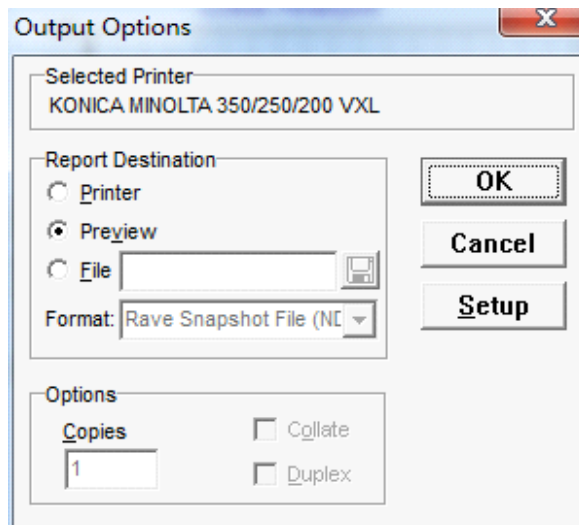


There will be Record No., Sound Value, Weight and time in the exported excel.

	RecNo	MeaValue	Weight	Time	Date
2					
3	1	81.0	A	14:29:23	2016/11/26
4	2	53.5	A	14:29:24	2016/11/26
5	3	52.8	A	14:29:25	2016/11/26
6	4	52.0	A	14:29:26	2016/11/26
7	5	51.9	A	14:29:27	2016/11/26
8	6	56.9	A	14:29:28	2016/11/26
9	7	57.5	A	14:29:29	2016/11/26
10	8	52.7	A	14:29:30	2016/11/26
11	9	52.0	A	14:29:31	2016/11/26
12	10	47.6	A	14:29:32	2016/11/26
13	11	77.6	A	14:29:33	2016/11/26
14	12	48.1	A	14:29:34	2016/11/26
15	13	47.5	A	14:29:35	2016/11/26
16	14	47.0	A	14:29:36	2016/11/26
17	15	47.5	A	14:29:37	2016/11/26
18	16	47.2	A	14:29:38	2016/11/26
19	17	46.8	A	14:29:39	2016/11/26
20	18	78.3	A	14:29:40	2016/11/26
21	19	48.8	A	14:29:41	2016/11/26
22	20	58.9	A	14:29:42	2016/11/26

## 7. Printing


Click , Print data.




**Output Options**

Selected Printer: KONICA MINOLTA 350/250/200 VXL

Report Destination:

- ☐ Printer
- ☒ Preview
- ☐ File 

Format: Save Snapshot File (NFI) 

Options:

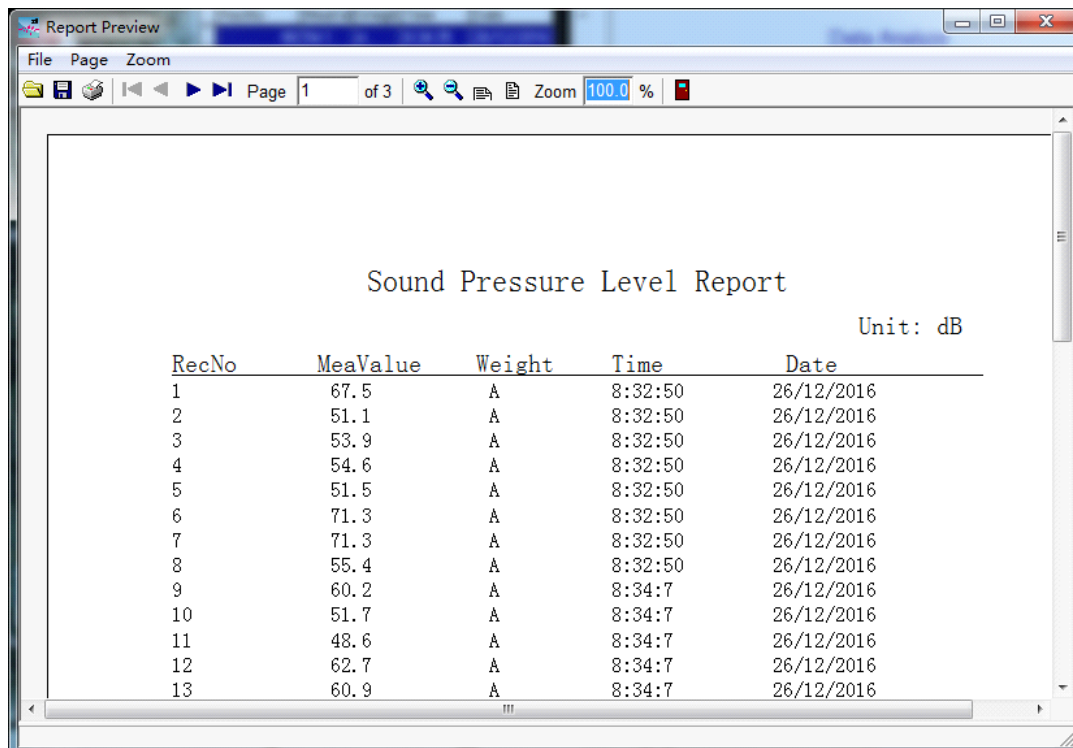
Copies:

☐ Collate

☐ Duplex

OK Cancel Setup

Click OK to preview.



Report Preview

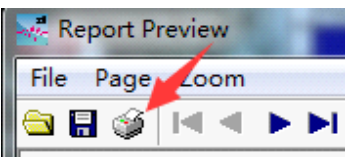
File Page Zoom

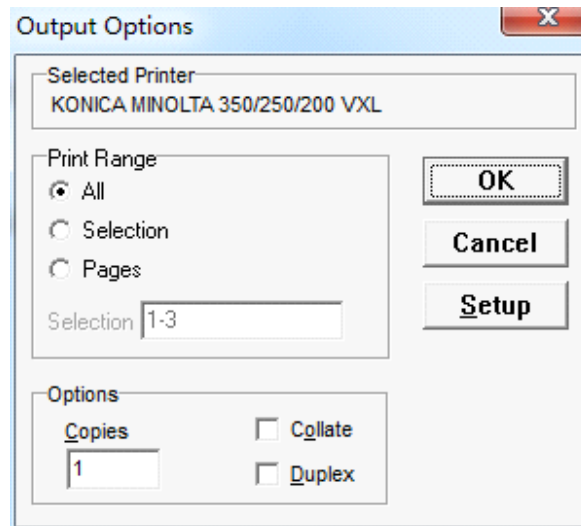
Page 1 of 3 Zoom 100.0 %

Sound Pressure Level Report

Unit: dB

RecNo	MeaValue	Weight	Time	Date
1	67.5	A	8:32:50	26/12/2016
2	51.1	A	8:32:50	26/12/2016
3	53.9	A	8:32:50	26/12/2016
4	54.6	A	8:32:50	26/12/2016
5	51.5	A	8:32:50	26/12/2016
6	71.3	A	8:32:50	26/12/2016
7	71.3	A	8:32:50	26/12/2016
8	55.4	A	8:32:50	26/12/2016
9	60.2	A	8:34:7	26/12/2016
10	51.7	A	8:34:7	26/12/2016
11	48.6	A	8:34:7	26/12/2016
12	62.7	A	8:34:7	26/12/2016
13	60.9	A	8:34:7	26/12/2016

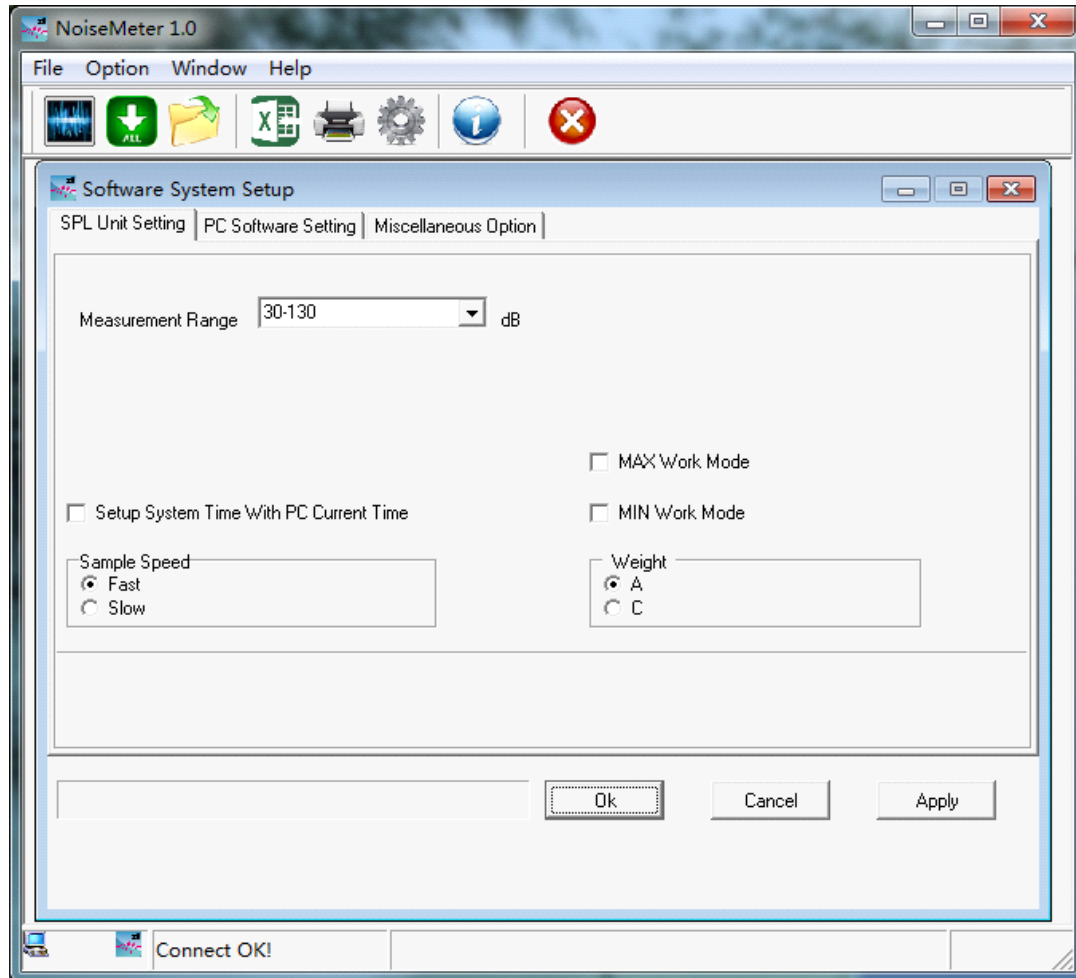
Click , show as below:



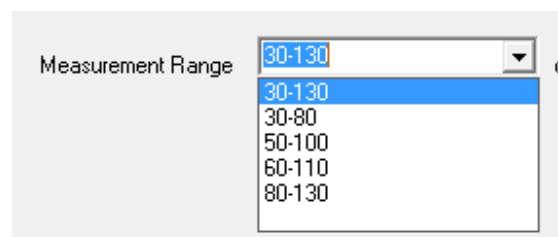
Click OK to start printing.

## 8. Setting

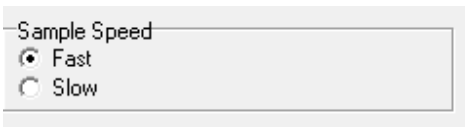
Click  to settings.



- 1) Set the device, Click "SPL Unit Setting" to the interface
- 2) Set the measuring range, select the measuring range in "Measurement Range".  
Note: range selection now is not available for this model.



- 3) ☒ Setup System Time With PC Current Time

4) 

5) 

6) 

7) 

8) Set the software: Click PC Software Setting to set the software.

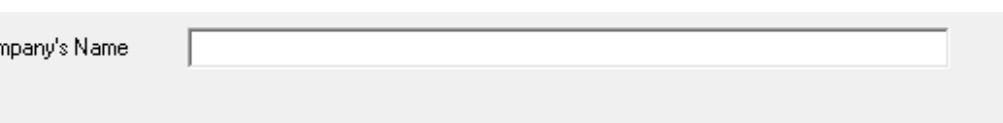
9) 

10) 

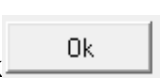

11) 

12) Click Miscellaneous Option to other setting.

13) Set the Company Name.



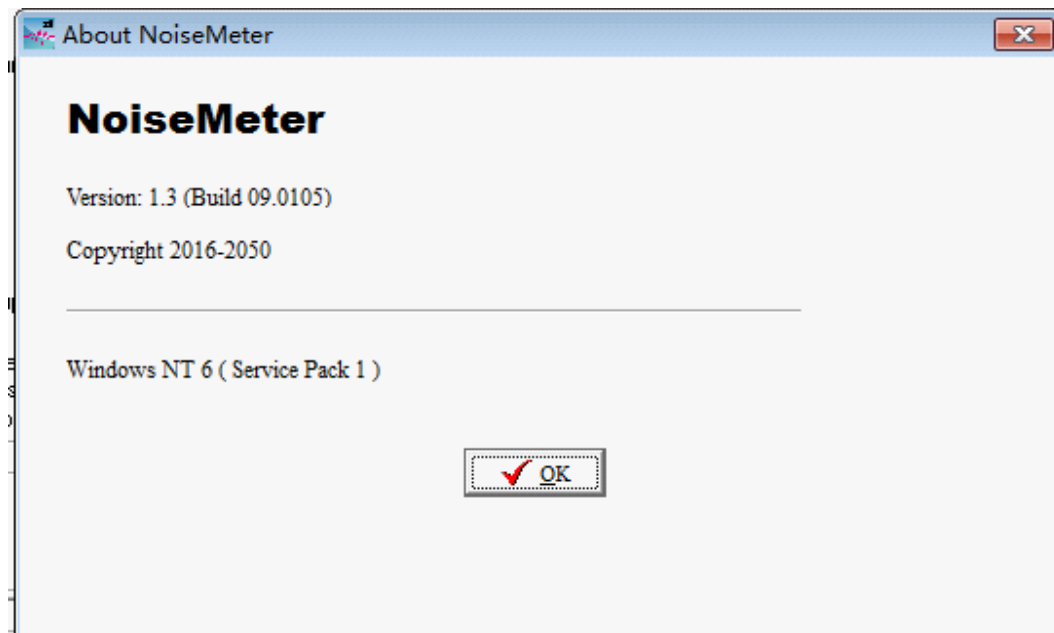
14) Finish and apply the settings.

Click  after the setting, and then click  to finish.

## 9. About



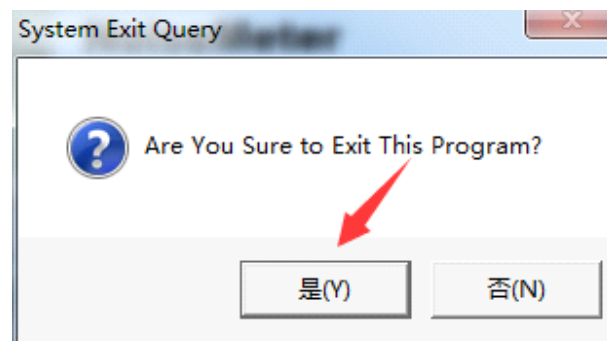
Click to "About" page



## 10.Exit



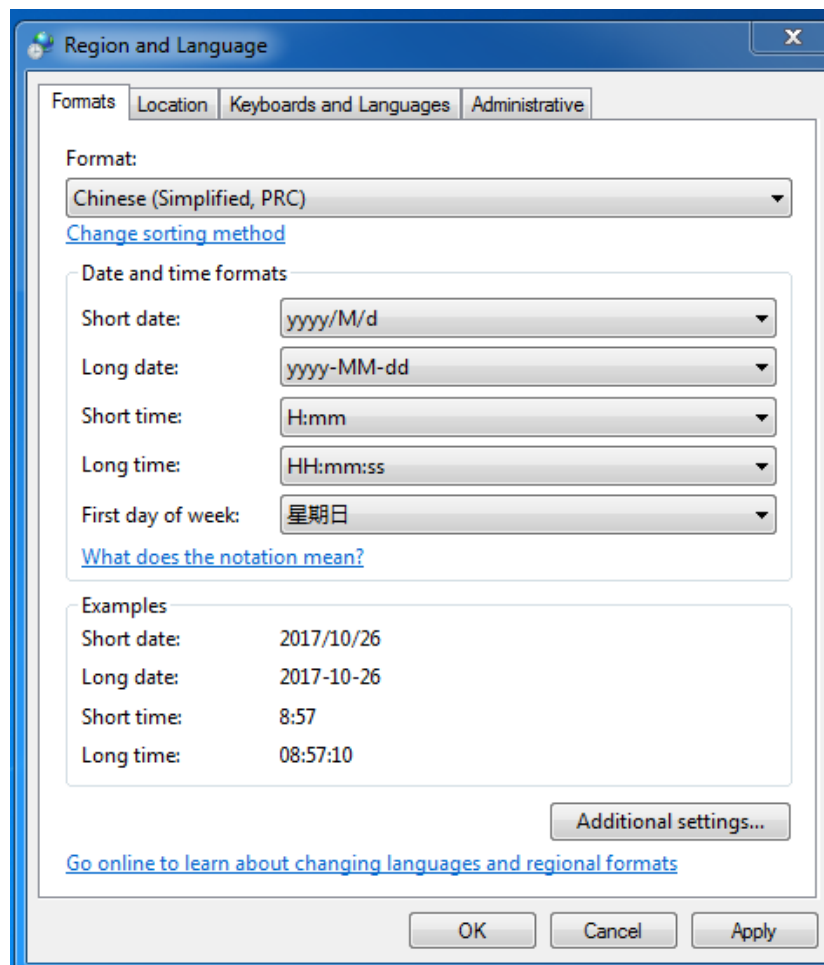
Click and choose Yes to exit the software.



### III. Common Errors and How to Solve

1. Error: "the field is too small to accept the amount of data you attempted to add. Try inserting or pasting less data"

Solution: Click <the Clock, language, and Region> option in the Control Panel, and refer to the image below for Settings:



2. Error: "Access violation at address 0047DC2E in module 'NoiseMeater.exe'. Read of address 00000030"

Solution: Run the program in a compatible Windows XP (Service Pack 3) mode. The specific operation is as below:

Right-click the program and choose Properties. Then select compatibility in pop-up Windows, check "the option of Run this program in compatibility mode for: Windows XP (Service Pack 3)" in the Compatibility.

