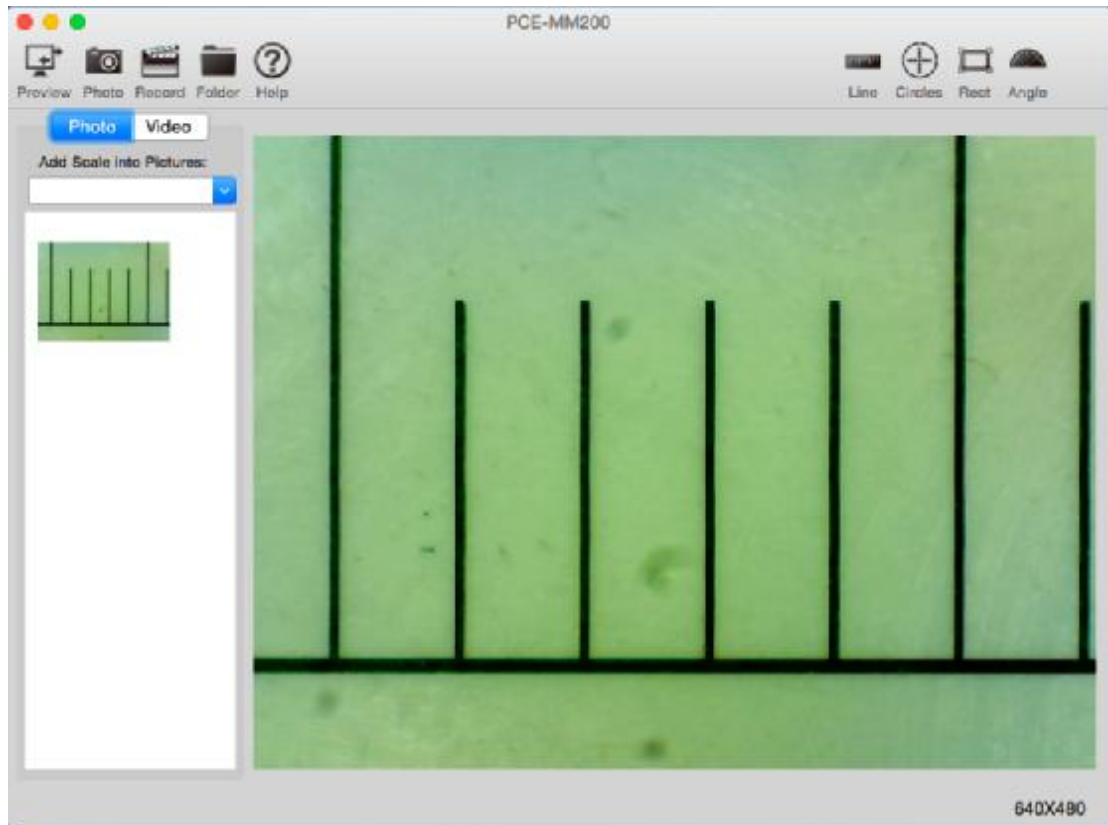
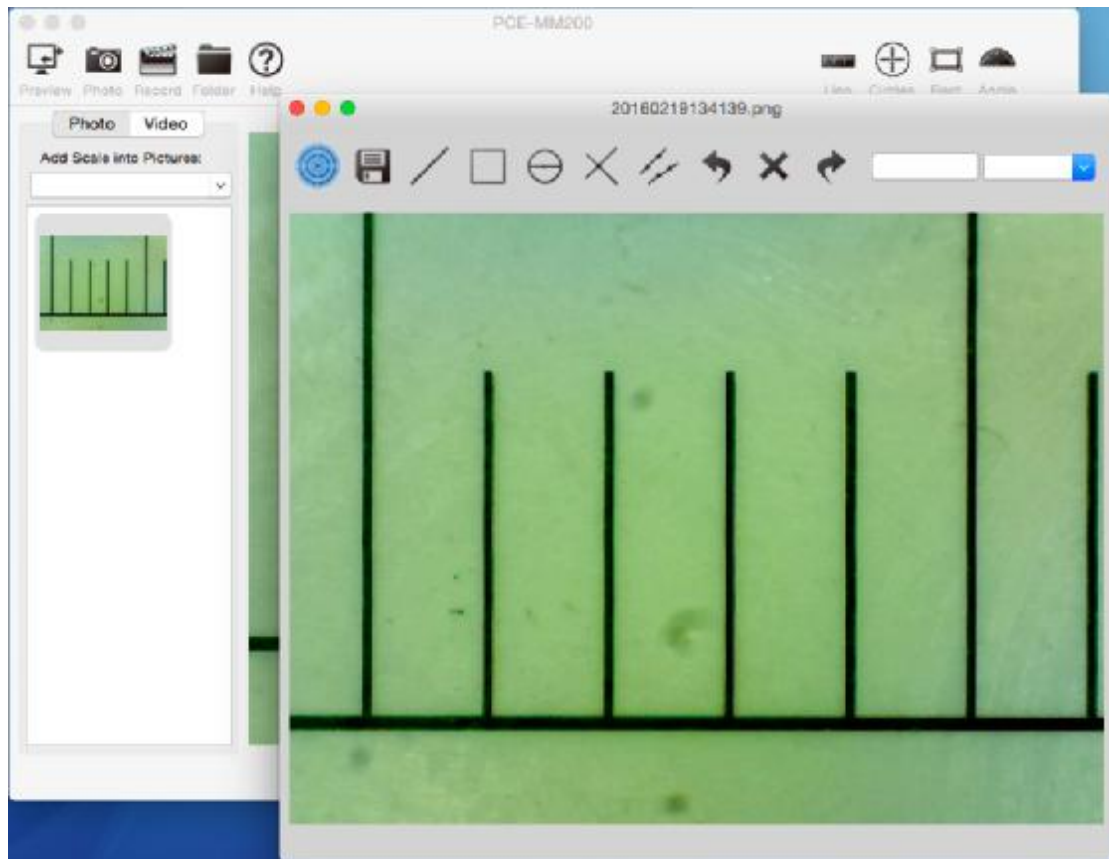


Calibration and Measurement

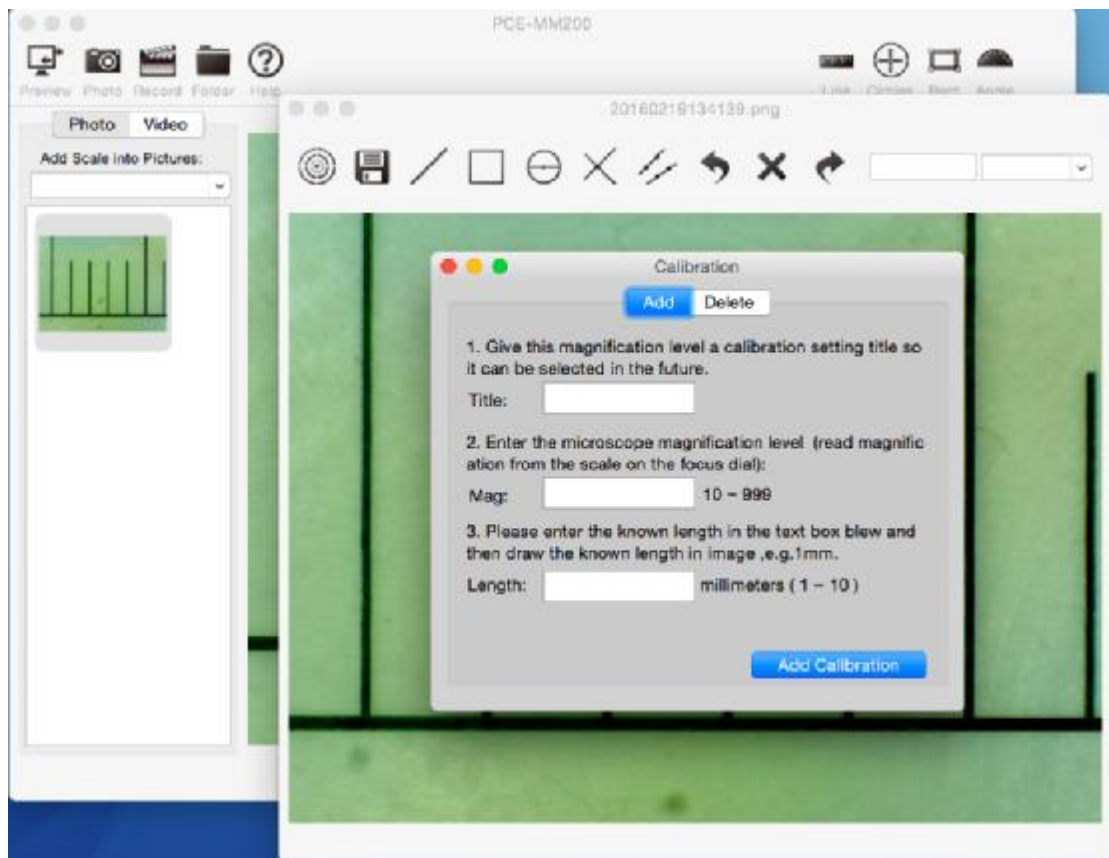
1. To calibrate, select a know measurement standard, such as a ruler, as to be observed object.
2. Bring the image of the selected ruler into focus by turning the "Focus & Magnification wheel"
3. Determine the magnification by taking a reading from the scale on the focus dial (the default magnification is 60X), then Click "Photo" button to capture a image as below:



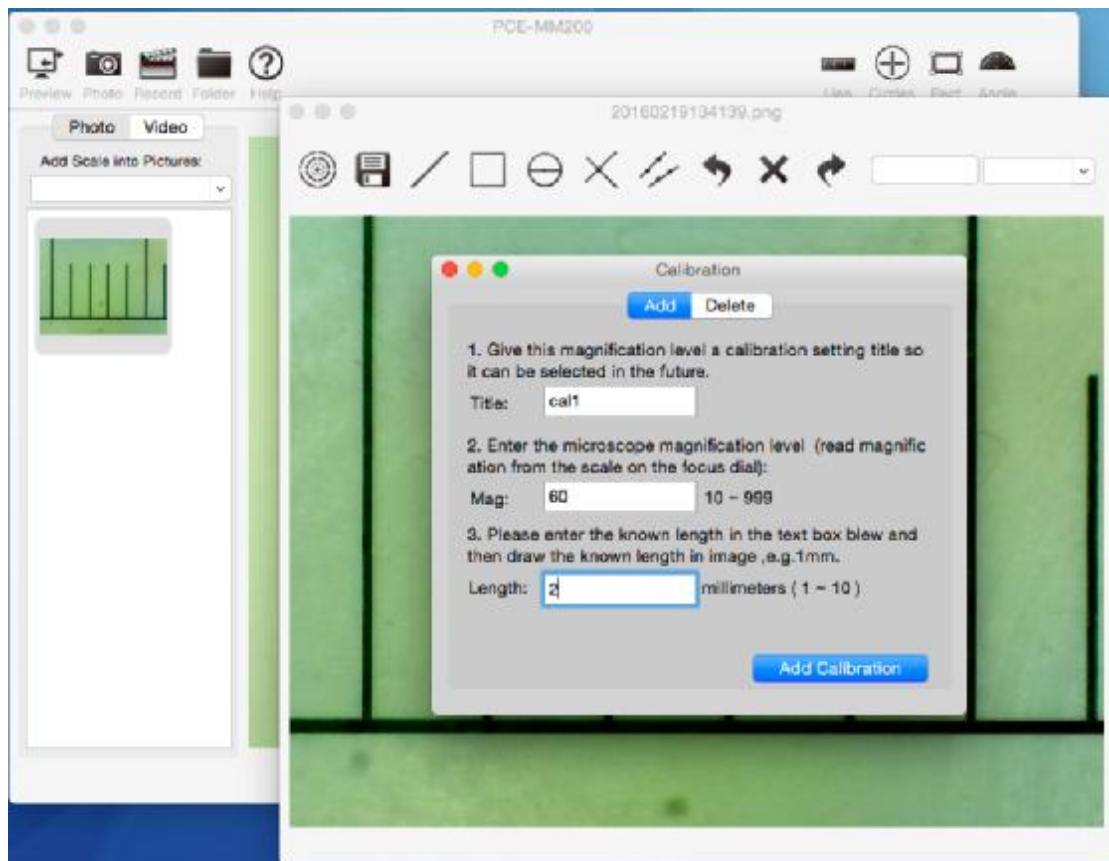
4. Double-Click the Thumbnail on the left as below:



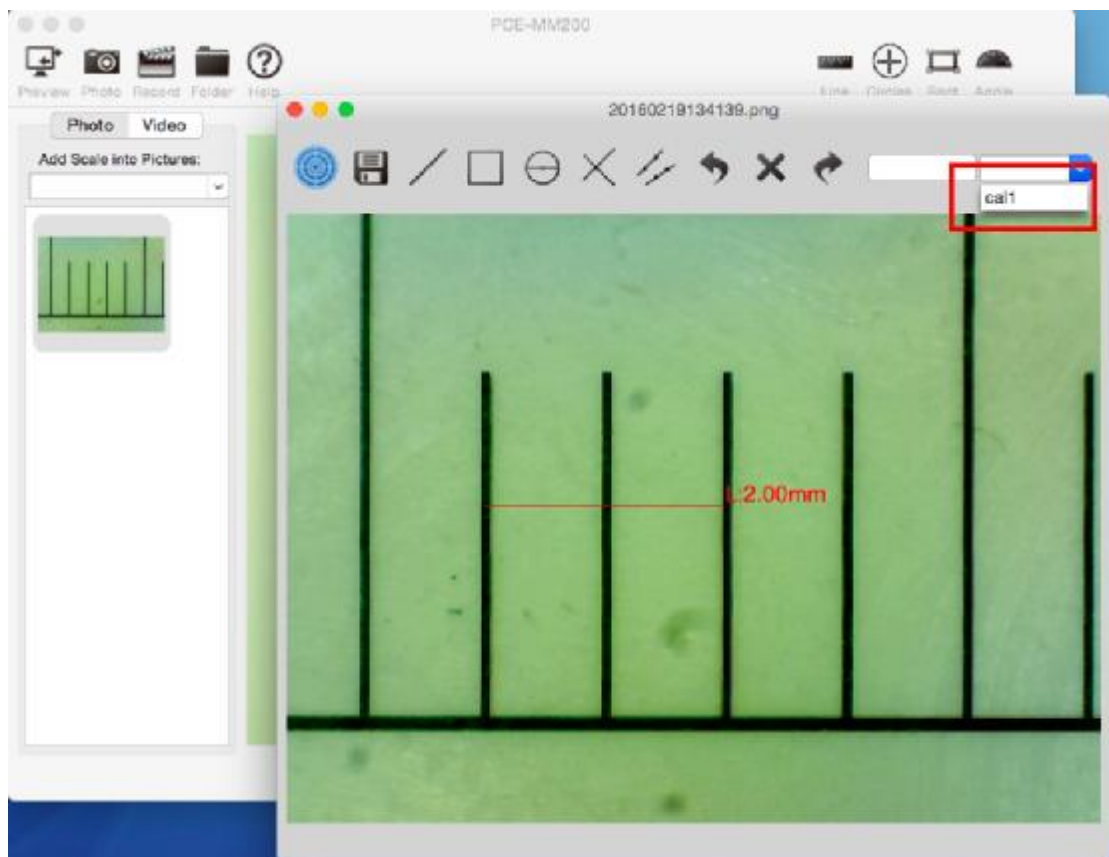
5. Click "Calibration" Button as below:



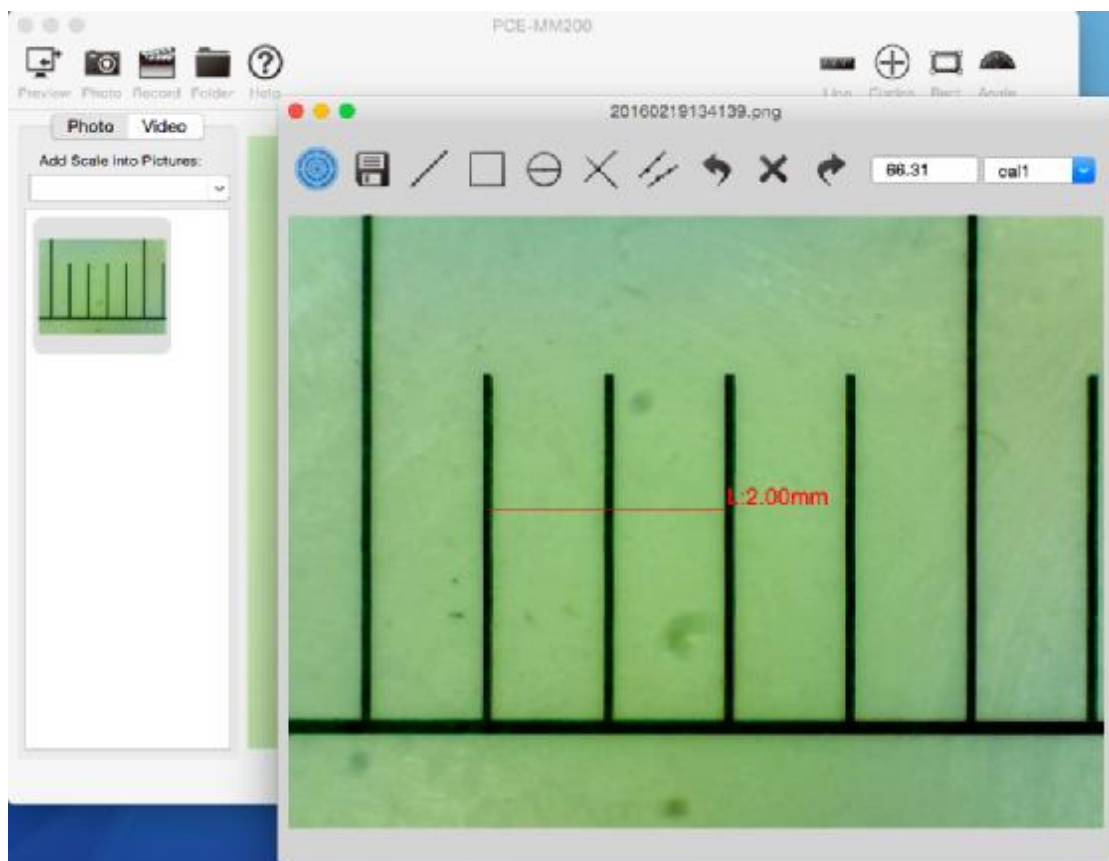
6. Fill in the relevant information (Title: cal1, Magnification: 60, line length: 2mm)



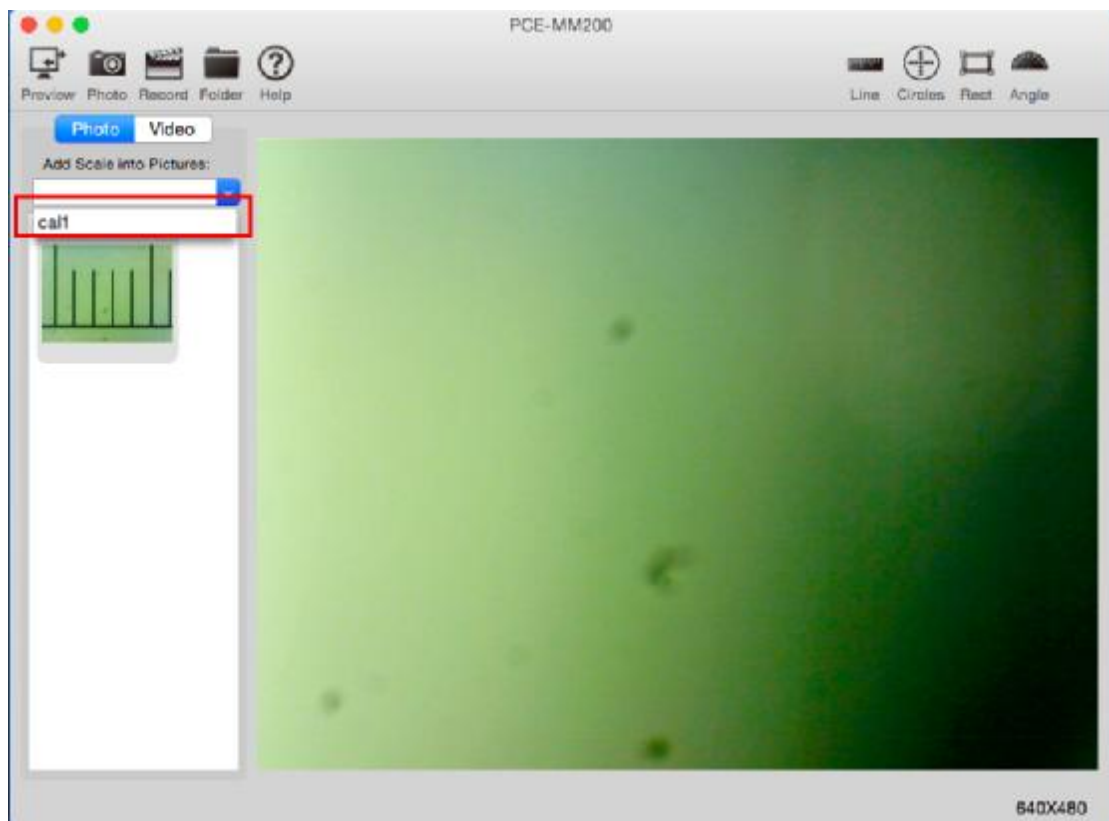
7. Click "Add Calibration" Button and close the calibration window, and then directly draw a line to complete the calibration (don't click "line" button) as below:



8. When you complete the calibration, Now you can make measure on image window.



9. Close the image measurement window, then you can select magnification as below:



10. Now you can make measure on video window as below:

