

Inspection Camera



Inspection camera offer new perspectives of the interior of machines and equipment and are the ideal tool for servicing and maintenance. Thanks to their flexible fibre optic cables and their light weight, these high-quality endoscopes are ideal for preventative measures to be taken without the need to dismantle the machinery first. With the help of endoscopes, inspections in industrial sector can therefore be organized considerably faster, and more cost-efficiently. Endoscopes are used mainly by electricians, safety professionals, experts in any sector, mechatronics engineers, precision mechanics, motor mechanics, etc. Endoscopes are also useful in schools and universities, especially in practical applications, for demonstrating the internal systems of a larger system or device. Originally, endoscopes were developed for medical diagnostics. Today, they are also used in the industrial sector to make visual checks of spaces which are difficult to access. Our technicians and engineers will be pleased to advise you on all our products.

PCE-VE 1036HR-F

2-way industrial inspection camera with various optional endoscope cables (1 m - 10 m and Ø 3.9 mm - 6 mm)

- large LCD (7 ..)
- bright LEDs on the camera head
- increase picture quality with 3 buttons:
 - high-resolution, clear images
 - brilliant pictures in low light conditions
 - anti-reflection and particle-free images on metal and mirror surfaces
- side LED's for a better illumination when using a mirror
- memory for pictures and videos on SD card
- microphone for the audio input
- USB-interface



PCE-VE 1036HR-F

PCE-VE 1000



TECHNICAL SPECIFICATIONS

Main unit

Screen	7" LCD, 800 x 480 pixels
Photo resolution	640 x 480 pixels / JPEG
Video resolution	640 x 480 pixels / MPEG (with Sound)
Case test	1 m fall
Power supply	Li-Ion battery
Interface	USB
Memory	8 GB SD card up to 32 GB
AV output / Interface	NTSC / PAL
Audio input	Built-in microphone
Brightness setting	Adjustable, 10 levels
Run time per battery charge	5 hours
Charging time	3 hours
Charging temperature	+10...+40°C
Operating temperature	0...+60°C
Storage temperature	0...+60°C
Protection class	IP 57
Dimensions	240 x 154 x 47 mm
Weight	1300 g

Camera Cable

Cable length	3 m
Camera head	Ø 6 mm
Control unit of the cable	Lighting improvement Rotation by 360°, in 90°Steps, change the scattering when using a mirror
Lighting	Camera head lock, keylock
Length camera head	Camera head w. 3 white LEDs ca. 20 mm
Material Camera head	Stainless steel
Resolution	VGA (640 x 480)
Depth of cut	10...60 mm
Working and storage temperature	-20...+60°C
Protection class	IP67
Video output	NTSC
Viewing angle	135°
Dimensions	228 x 35 x 53 mm
Weight	400g

OPTIONAL ACCESSORIES

K-PCE-VE-N-SCS	Borescope cable 1 m / Ø 3,9 mm semi rigid
K-PCE-VE-2in1-N	2 in1 cable 1 m / Ø 4,9 mm front camera and side camera switchable / semi rigid
K-PCE-VE-N-SC1	Borescope cable 1 m / Ø 5,5 mm semi rigid
K-PCE-VE-N-SC2	Borescope cable 2 m / Ø 5,5 mm semi rigid
K-PCE-VE-N-SC10	Cable 10 m / Ø 5,5 mm flexible
K-PCE-VE-2W1-N	2-way Borescope cable 1 m / Ø 6,0 mm, flexible

INCLUDES

Borescope, thrust cables, carrying case, 8GB SD-card, cleaning kit, front mirror, USB cable, video cable, power adapter, user manual

ITEM NO. ITEM

K-PCE-VE 1000	borescope, basic equipment
K-PCE-VE 1036HR-F	borescope

Inspection Camera

PCE-VE 200

Inspection camera for Industry, Ø 4.5 mm, and Camera cupping

- Waterproof camera head (IP67 protection class)
- 4,5 mm / 0.18" diameter
- 1 m / 3.28' cable length
- 180° image rotation and mirror functionality
- 3,5" LCD display
- CMOS chip image sensor
- Micro USB 2.0 and TV outputs



TECHNICAL SPECIFICATIONS

Display	LCD, 3,5"
Image sensor	CMOS
Resolution	1600 x 1200 pixels JPEG / 640 x 480 pixels AVI video (dynamic / static)
Image rotation	180° and Mirror functionality
Freeze functionality	Yes
Zoom	Up to 4 times digital image magnification
Menu languages	English, Spanish, French, German Russian, Japanese, Simplified Chinese, traditional Chinese
Cable diameter	4,5 mm / 0.18" cable diameter
Cable length	1 m / 3.28'
Cable rigidity	Semi-flexible (semi-rigid spiral)
Lighting	6 white LEDs (adjustable intensity)
Field of view/ angle	90°
Sight depth	15...100 mm / 0.59...3.94"
Storage medium	Micro SD card (not included)
Interfaces	Micro USB 2.0, TV output (PAL), Micro SD card slot
Power supply	Rechargeable 18650 Li-ion battery
Battery capacity	2600 mAh
Battery life	Up to 5 hours from full charge

Operating Conditions	Main unit and probe, in air: -10...+50°C / +14...+122°F rel. humidity 15...90% Probe, in water +5...+50°C / +41...+122°F
Fluid resistance	Main unit and probe: Machine oil, light oil or 5% saline
Protection against	Main unit: Blowing rain (battery compartment must be closed) not underwater, Probe: Water, oil and dust, according to protection class IP67

INCLUDES

Video-borescope, video output cable, wall charger with detachable USB to Micro USB cable, instruction manual

ITEM NO.	ITEM
K-PCE-VE 200	borescope

PCE-RS 27 / 40

Borescope (Ø 2,7 mm / Ø 4,0 mm)

- diameter 2,7 mm or 4 mm (depending on the type)
- LED bulbs
- working length 175 mm (PCE-RS 27) / 175 or 432 mm (PCE-RS 40)
- extremely robust
- High resolution
- battery operation



TECHNICAL SPECIFICATIONS

Effective length	175 mm at PCE-RS 27 175 mm or 432 mm at PCE-RS 40
Diameter	2,7 mm at PCE-RS 27 4,0 mm at PCE-RS 40
Field of view	45°
Lighting	LED
Power supply	3.7 V Li-Ion battery (rechargeable)

INCLUDES

Rigid borescope, rechargeable battery, charger, carrying case, operating instructions

ITEM NO.	ITEM
K-PCE-RS 27	rigid borescope
K-PCE-RS 40-175	rigid borescope
K-PCE-RS 40-432	rigid borescope

OPTIONAL ACCESSORIES

K-ES-45-RS27	Mirror extension for PCE-RS 27
K-ES-45-RS40-175	Mirror extension for PCE-RS 40
K-ES-45-RS40-432	Mirror extension for PCE-RS 40

PCE-RS 50 / 90

Borescope (Ø 5 mm / Ø 9 mm)

- light weight
- ergonomic design
- light temperature 5300° K
- minimal heat development
- no lamp replacement needed
- adjustable light intensity



TECHNICAL SPECIFICATIONS

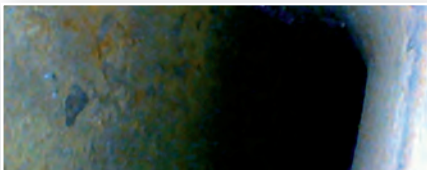
Diameter	5 mm or 9 mm depending on model
Working length	275 mm or 350 mm
Viewing direction	90°
Brightness	individually adjustable
Lighting	LED (1 W)
Battery pack	Li-Ion
Light temperature	3500° K

INCLUDES

Rigid borescope, power supply, charger, carrying case, user manual

ITEM NO. ITEM

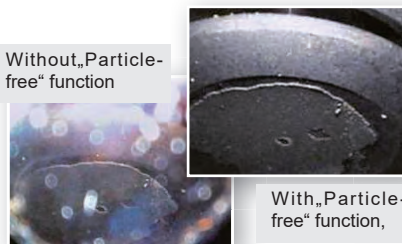
K-PCE-RS 50	borescope
K-PCE-RS 90	borescope



PCE-VE 320HR / PCE-VE 333HR

Inspection camera(Ø 5,5 mm / L = 1 m or 3 m) / Video and image recording

- with boost function, better pictures in dark areas and holes
- cable diameter of 5,5 mm
- LED illumination (2 additional LEDs at the sides for better illumination when using the mirror)
- various camera tubes optional



TECHNICAL SPECIFICATIONS

Display	3,5" (88,9 mm) TFT display
Image sensor	CMOS
Resolution videos/pictures	640 x 480
Picture format	JPEG
Frame rate	30 fps
Lighting	Automatic
	4 LEDs on the front
	2 LEDs on the side
Field of view	67°
Depth of field	1,5...10 cm
Bending radius	90 mm
Cable length	1 m at PCE-VE 320HR 3 m at PCE-VE 333HR
Cable rigidity	Semi-flexible
Cable diameter	5,5 mm
Boost function	improved image quality in dark environments
Interfaces	Mini-USB 1.1, AV out
Memory	8 GB SD card
Compression format	MPEG4
Video format	ASF
Video output system	NTSC / PAL
Power supply	rechargeable 3.7 V Li-ion battery

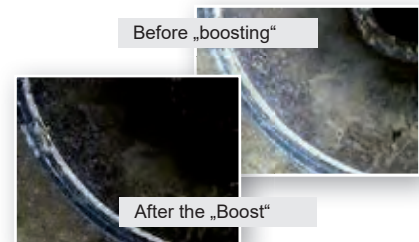
Operating Conditions	0...+60°C
Dimensions	207 x 118 mm (79 mm) x 37 mm
Weight	450 g (incl. carrying case)

INCLUDES

Video-borescope, 8 GB SD card, USB cable, mains adaptor, carrying case, instruction manual

ITEM NO. ITEM

K-PCE-VE 320HR	borescope cable 1 m
K-PCE-VE 333HR	borescope cable 3 m



Inspection Camera

PCE-VE 3xxN Series

Borescope (Ø 5.5 mm / L up to 10 m)

- cables available in lengths 1 m, 2 m and 10 m
- images / photos (stored in device) and videos
- cable to access areas which are difficult to reach
- LED light enables user to view dark cavities
- video output NTSC & PAL



PCE

TOP
seller

TECHNICAL SPECIFICATIONS

Model PCE-	VE 320	VE 330	VE 340
Cable length	1 m	2 m	10 m
Diameter	5.5 mm		
Bending radius	90 mm		
Resolution	320 x 240 / 640 x 480		
Frame r./angle of vis.	30 per second / 67 °		
Viewing distance	15 ... 100 mm		
Display	TFT 3.5" (8.89 cm)		
Interface / memory	USB / SD card 8 GB		
Operating conditions	0 ... +60 °C		
Power supply	3.7 V Li-Ion battery		
Weight	450 g		

INCLUDES

Video borescope (one of the models), SD card 8 GB, software, USB cable, carrying case, manual

ITEM NO.

ITEM

K-PCE-VE 320N	video borescope 1 m
K-PCE-VE 330N	video borescope, 2 m
K-PCE-VE 340N	video borescope, 10 m

OPTIONAL ACCESSORIES

K-ES-45-VE 300	mirror attachment 45 °
----------------	------------------------

PCE-VE 360N

Inspection camera for Industry, Workshops and R&D; Ø 3.9 mm, L = 1,000 mm

- data stored on SD card / 8 GB SD card included in delivery
- cable diameter only 3.9 mm / 1 m cable length
- type of cable: semi-rigid (gooseneck)
- image and video recording possible
- image data can be viewed in display



PCE



TECHNICAL SPECIFICATIONS

Flexible cable length	1,000 mm
Image sensor	CMOS
Resolution image sensor	320 x 240 / 640 x 480 pixels (dynamic / static)
Frame rate	30/s
Exposure	automatic
White balance	fixed
Field of view	67 °
Visible distance	1.5 ... 10 cm
Lighting	3 LEDs
Cable diameter	3.9 mm
Display	3.5" TFT display
Interface	mini USB 1.1 (AVout / AVin)
Image memory	8 GB (SD memory card)
Compression format	MPEG4
Image format	JPEG (640 x 480)
Video output format	NTSC & PAL
Video format	ASF (320 x 240)
Power supply	rechargeable 3.7 V Li-on battery
Operating conditions	0 ... +60 °C
Weight	450 g (including bag)

INCLUDES

Video borescope, 1m cable, 8 GB SD card, USB cable, carrying case, battery charger, instruction manual

ITEM NO.

ITEM

K-PCE-VE 360N	borescope
---------------	-----------

OPTIONAL ACCESSORIES

K-SOFT-M-VE-N	software
K-PCE-VE-N-SC1	borescope cable 1 m
K-PCE-VE-2in1-N	borescope cable 2 in 1
K-PCE-VE-N-SC2	borescope cable 2 m
K-PCE-VE-N-SC10	borescope cable 10 m
K-PCE-VE-2W1-N	2-way borescope cable
K-HT-55-PCE-VE	borescope cable support



PCE-VE 380N

Video Borescope for Pipe Inspection

- camera head only 28 mm Ø / incl. hand-held device
- 8 GB SD card (images and videos)
- waterproof camera head / case protection IP 68
- bright illumination (8 LEDs)
- push cable length of 22 m



PCE-VE 350N / PCE-VE 350N3

2-Way Borescope for Industry / Crafts with 8 GB SD Card for Images / Videos

- flexible cable
- cable diameter 6.0 mm
- records images / photos and videos
- 2-way optics
- 8 GB memory card
- carrying case included



TECHNICAL SPECIFICATIONS

Cable Ø and length	28 mm / 22 m
Vis. distance/angle of vis.	10.... mm / 150.8 °
Exposure	automatic
Frame rate	30/s
Field of view	150.8°
Depth of field	10...mm
Interface	mini USB 1.1 & AV out
Storage options	images and videos
Image format	JPEG (640 x 480 pixels)
Video output format	NTSC & PAL
Video format	ASF (320 x 240)
Memory	8 GB SD memory card
Display	3.5" TFT
Illumination	8 LED
Power supply	3.7 V recharge. Li-Ion battery
Operating conditions	-10 ... +60 °C
Dimens. hand-held device	207 x 118 (79 mm) x 37 mm

INCLUDES

Hand-held endoscope, cable on reel, centring star, 8 GB SD card, carrying case, instruction manual

ITEM NO.	ITEM
K-PCE-VE 380N	borescope

TECHNICAL SPECIFICATIONS

Flexible cable length	1000 mm or 3000 mm (with joystick 2000 mm)
Image sensor	CMOS
Resol. image sensor	320 x 240 / 640 x 480 (dynamic / static)
Frame rate	30/s
Exposure	automatic
White balance	fixed
Field of v. / angle of vis.	67°
Visible distance	1.5 ... 10 cm
Illumination	4 LEDs
Cable diameter	6.0 mm
Camera head	can be moved in 2 directions
Bending radius	90 mm
Display	3.5" TFT
Interface	mini USB 1.1 & AV out
Image memory	SD memory card 2 GB
Compression format	MPEG4
Image format	JPEG (640 x 480)
Video output format	NTSC & PAL
Video format	ASF (320 x 240)
Power supply	3.7 V Li-Ion battery
Operating conditions	-10 ... +50 °C
Weight	450 g including bag

INCLUDES

Video endoscope, 8 GB SD card, USB cable, carrying case, battery charger, instruction manual

ITEM NO.	ITEM
K-PCE-VE 350N	borescope cable 1000 mm
K-PCE-VE 350N3	borescope cable 3000 mm

OPTIONAL ACCESSORIES

K-SOFT-M-VE-N	software
K-PCE-VE-N-SC1	borescope cable 1 m
K-PCE-VE-2in1-N	2-in-1 borescope cable
K-PCE-VE-N-SC2	borescope cable 2 m
K-PCE-VE-N-SC10	borescope cable 10 m
K-PCE-VE-2W1-N	2-way borescope cable



Inspection Camera

PCE-VE 350HR / PCE-VE 350HR3

Inspection camera (Ø 6,0 mm / L = 1 m or 3 m) / Video and image recording

- data stored on SD card / 8 GB SD card included in delivery
- with boost function, better pictures in dark areas and holes
- cable diameter only 6 mm / 1 m or 3 m cable length
- type of cable: flexible
- borescope with addressable head
- LED illumination (2 additional LEDs at the sides for better illumination when using the mirrors)



PCE-VE 370HR / HR3

Borescope (Ø 6.0 mm / L=1 m or 3 m)

- with boost function, better pictures in dark areas and holes
- 4-way borescope including camera head with 4-way optics
- 8 GB SD card
- LED illumination (2 additional LEDs at the sides for better illumination when using the mirrors)



TECHNICAL SPECIFICATIONS

Flexible cable length	1000 mm or 3000 mm depending on model
Image sensor	CMOS
Resolution image sensor	320 x 240 / 640 x 480 pixels (dynamic / static)
Frame rate	30/s
Exposure	automatic
White balance	fixed
Field of view	67 °
Visible distance	1.5 ... 10 cm
Lighting	4 LEDs on the front 2 LEDs on the side
Cable diameter	6 mm
Display	3.5" TFT display
Interface	mini USB 1.1 (AV out)
Image memory	8 GB (SD memory card)
Compression format	MPEG4
Image format	JPEG (640 x 480)
Video output format	NTSC & PAL
Video format	ASF (320 x 240)
Power supply	rechargeable 3.7 V Li-ion battery
Operating conditions	0 ... +60 °C
Weight	450 g (including bag)

INCLUDES

Video borescope, cable, 8 GB SD card, USB cable, carrying case, battery charger, instruction manual

ITEM NO. ITEM

K-PCE-VE 350HR	borescope cable 1 m
K-PCE-VE 350HR3	borescope cable 3 m



TECHNICAL SPECIFICATIONS

Flexible cable length	1000 mm or 3000 mm depending on model
Image sensor	CMOS
White balance	fixed
Diameter	6.0 mm
Bending radius	90 mm
Resolution	320 x 240 / 640 x 480
Frame r./angle of vis.	30 per second / 67 °
Viewing distance	15 ... 100 mm
Display	TFT 3.5" (8.89 cm)
Interface / memory	USB / SD card 8 GB
compression format	MPEG4
Video format	ASF
Picture format	JPEG
Operating conditions	0 ... +60 °C
Power supply	3.7 V Li-Ion battery
Weight	450 g

INCLUDES

Video borescope (one of the models), SD card 8 GB, software, USB cable, carrying case, manual

ITEM NO. ITEM

K-PCE-VE 370HR	video borescope 1 m
K-PCE-VE 370HR3	video borescope, 3 m

PCE-VE 650

Borescope (Ø 4.5 mm / L=1500 mm)

- rotatable camera head
- 2-way borescope
- two bright LEDs on the camera head
- 16 GB SD card (max. 32 GB supported)
- 3600 mAh rechargeable battery



VIS 3xx Series

Innovative Camera for Video Inspection with 20 m Cable

- rotatable and pivotable colour camera head (40 mm Ø)
- orientation help by home function – camera head aligns itself automatically
- 4 h flexibility – ample battery life with 2 rechargeables batteries for replacement
- video and photo recordings stored
- integrated location transmitter allows radiolocation
- camera head position indicated in display
- 2 GB SD card (Wöhler VIS 350)
- flexible



L 200 locator:
for locating the sensor head in pipes and walls (optional).



TECHNICAL SPECIFICATIONS

Camera	1/18" CCD sensor
Depth of field	10...100mm
Diameter/ length	Ø 4,5 mm / 1500 mm
Video signal	NTSC
Operating conditions	-20...+60°C
Display resolution	960 x 240 pixel
Picture a. video resolution	720 x 576 / 720 x 480 pixel
Rotating angle	0...90°
SD card	16 GB (max. 32 GB)
Interfaces	USB 2.0
Video signal	NTSC / PAL
Power supply	3600 mAh battery
Manu languages	English, Spanish, German, French, Italian, Chinese
Operating conditions	-10...+40°C
Storage conditions	-25...+55°C
Dimensions	100 x 89 x 28 mm

INCLUDES

Video borescope, SD card 16 GB, USB cable, carrying case, mains adaptor, battery, manual

ITEM NO.	ITEM
K-PCE-VE 650	video borescope

TECHNICAL SPECIFICATIONS

Display	7" TFT / 16:9 format
- Video-out	FBAS signal
- Power supply	2 12 V rech. batt. / 4 h b. life or mains adaptor
- Dimensions	176 x 114 x 32 mm
- Weight	400 g
Rotating / pivoting head	type: 1/3" COLOR CMOS
- Pixels (PAL / NTSC)	768 x 576 / 656 x 492
- Light sensitivity	0.5 lux
- Lens	f = 2.3 mm, F = 2.5
- Image capturing angle	H 115 °
- Light source	12 white LEDs
- Protection	waterproof in line with IP 67
- Dimensions	Ø 40 x 60 mm
- Operating conditions	0 ... +40 °C, 95 % max. RH
- Storage conditions	-20 ... +50 °C, 95 % max. RH
- Transmission frequency	8.9 kHz
Carrying case	hard case / plastic
- Dimensions	51 x 43 x 17 cm
- Weight	7 kg
Length	push rod 20 m (VIS 300) electronic (VIS 350)
Interface	mini USB (only on VIS 350)
Memory	SD card 2 GB

INCLUDES

Video endoscope, rotatable and pivotable colour camera head, wide screen TFT colour monitor, 2 m cable for monitor connection, spare plastic domes, anti-slip pad, rechargeable NiMH battery, charger, hard carrying case, instruction manual
 VIS 300 20 m push rod, Ø 6.5 mm
 VIS 350 2 GB SD card, mini USB cable, electronic meter counter

ITEM NO.	ITEM
K-VIS 300	video camera
K-VIS 350	video camera with memory

OPTIONAL ACCESSORIES

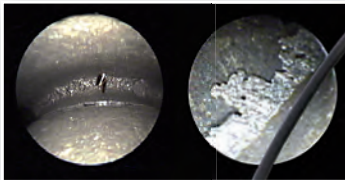
K-3883 I	guidance set 70
K-7430 J	L 200 locator
K-3847 J	guidance sleeve with lens protection
K-3681 J	camera roller guide
K-3634 J	guidance ball
K-3169 J	car recharger cable
K-3854 J	centring star
K-3857 J	guidance weight
K-3674 J	glass dome
K-3675 J	plastic domes 10 units
K-6814 J	sunshade

Inspection Camera

PCE-VE 700

LED inspection camera with workstation / integration into the production process

- probes of 0.7...4.0 mm diameter adapter, interchangeable
- one-time purchase price with low ongoing when retrofitting due to purchasing the matching probes
- time-saving due to the quick change of probes and intuitive operation
- energy saving due to the LED technology
- easy to use even with critical components and smallest access openings
- longevity of the system due to the solid workmanship
- highly accurate inspection results



TECHNICAL SPECIFICATIONS

Operating elements front panel	white balance, GAIN (3 presets) Window functionality (4 presets) on/of switch, LED control
Video outputs	S-Video (Y/C), Composite Video (CVBS)
Digital output	USB 2.0
Image sensor camera head	1/4" CCD
Scanning system	2:1 interlaced
Pixels	PAL 752 (H) x 582 (V)
Resolution	625 lines
Signal to noise ratio (SNR)	46 dB
Power supply	100...240 V AC, max. 0.5 A, 50/60 Hz
Power consumption	10 VA
Operating temperatur.	+10...+40°C
Dimension / weight	169 x 62 x 247 mm / 1.2 kg

INCLUDES

Borescope, control unit, carrying case, demo version for image and video recording and archiving, manual

ITEM NO.	ITEM
K-PCE-VE 700	borescope

OPTIONAL ACCESSORIES

K-96.0405s	probe stainless steel 96.0404s (right) Ø 4,0 mm, L-170 mm,
K-96.0275s	probe Ø 2,7 mm, L-110 mm, (right)
K-MSP.30110	thermowell probe f. Ø 3,0 96.0275s
K-96.0152s	probe Ø 2,0 mm, L-135 mm, (right)
K-MSP.22132	thermowell probe f. 96.0152s Ø 2,2
K-96.0158s	probe Ø 2,0 mm, L-135 mm, (right)
K-MSP.22135	thermowell probe f. Ø 2,2 96.0158s
K-96.0103s	probe Ø 0,7 mm, L-150 mm, plastic tubing (flexible)
K-MSP.10150	thermowell probe f. 96.0103s Ø 1,0
K-96.0274s	probe Ø 2,7 mm, L-110 mm, (right)
K-MSP.30111	thermowell probe f. 96.0274s Ø 3,0
K-96.0123s	probe Ø 1,6 mm, L-150 mm, (flexible)
K-MSP.19150	thermowell probe f. 96.0123s Ø 1,9
K-96.0132s	probe Ø 1,6 mm, L-135 mm, nickel titanium tube (semi-flexible)
K-MSP.18135	thermowell probe f. 96.0132s Ø 1,8
K-96.0124s	probe Ø 1,0 mm, L-150 mm, nickel-tita.
K-MSP.12150	thermowell probe f. 96.0124s Ø 1,2
K-96.0103s	probe Ø 0,7 mm, L-150 mm, plastic tubi
K-MSP.10150	thermowell probe f. 96.0103s Ø 1,0
K-96.0132s	probe Ø 1,6 mm, L-135 mm, nickel-tita.
K-96.0020I	holder / holder for the PCE-VE 700

PCE-IVE 320

Borescope Ø 32 mm for diagnostics

- flexible camera head
- LCD monitor
- adjustable brightness LEDs
- up to three meters long
- video function
- SD card slot as a storage option



TECHNICAL SPECIFICATIONS

Camera heat / LED	1/4 CMOS / 12 white LEDs
Pixel	0.3 megapixels
Camera length / diameter	320 mm / 23 mm
LCD screen	5.0-inch LCD
Resolution	800 x 480
Monitor size	130 x 80 x 10 mm
Telescopic stick length	0.9 m - 2.3 m
Battery capacity	1500 mAh
Output voltage	DC 12V
Input voltage	AC 100...240 V 50/60 Hz
Output voltage	DC 12 V 500 mA
PAL Output	704 x 576 (PAL)
Video format / SD card	MPEG-4 / 2...32GB
Recording format	ASF
Complete set length	max. length 3 m
Voltage supply	DC 12 V
Operating / storage temp.	-20°C...+50°C

INCLUDES

camera heat, LCD monitor, battery, telescopic pole, swivel, carrying strap, SD card 8 GB, card reader, headphone, charging adapter, user manual

ITEM NO.	ITEM
K-PCE-IVE 320	borescope