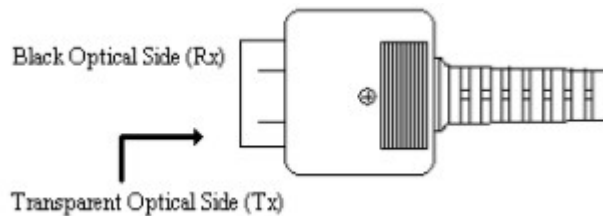


Instruction Manual

RS232 Wiring Hardware.....	2
Hardware Requirements and Setup.....	3
Software Requirements and Setup.....	4
Communicating Operation.....	8
Run Software.....	8
Data Record.....	9
Download Data.....	10
SD Card.....	11
Data Convert.....	12
Apply for Excel.....	12
Apply for Graph.....	14
Sampling Time.....	16
Real Time Clock.....	17
Single Record.....	18

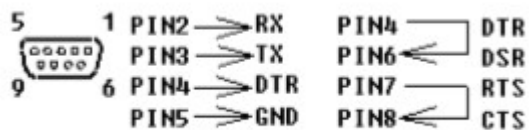
● RS232 Wiring Hardware

PC Interface Cable Meter side of PC Interface Cable The RS-232 “Optical” plug side of the PC Interface Cable connects to the meter’s RS-232 “Optical” jack. Refer to the diagram below for wiring information.



Computer’s Serial Port side of Interface Cable

The RS-232 “DB-9” side of the PC Interface Cable connects to the PC’s COM port. Refer to the diagram below for wiring information. Note that a SERIAL to USB Adapter may be used.



RS232 Default Settings When RS-232 communication enabled ,the default RS-232 settings are

Baud Rate 19200

Parity None

Data bits 8

Stop bit 1

● **HARDWARE REQUIREMENTS AND SETUP**

PC HardWare Requirements :

HDD, CD Rom, 486 PC or above, with an available COM port

EGA or higher monitor

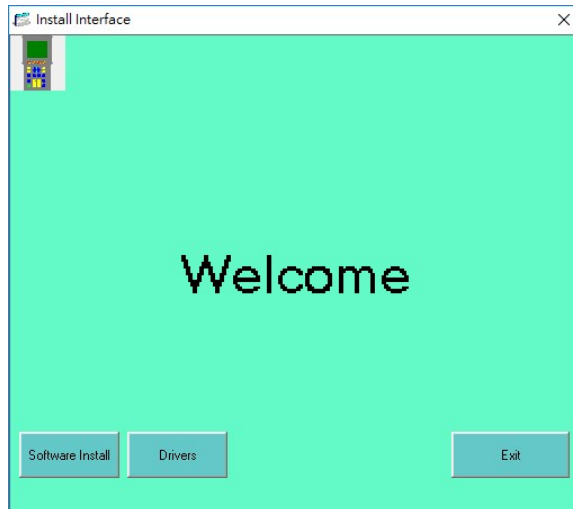
4M bytes or more memorysize

PC HardWare Setup :

- 1) Switch off all power related to the PC
- 2) Connect the DB9 (female) end of the supplied RS-232 cable to available COM port
- 3) Switch on all related power
- 4) Connect the fiber end of the supplied RS-232 cable to the meter

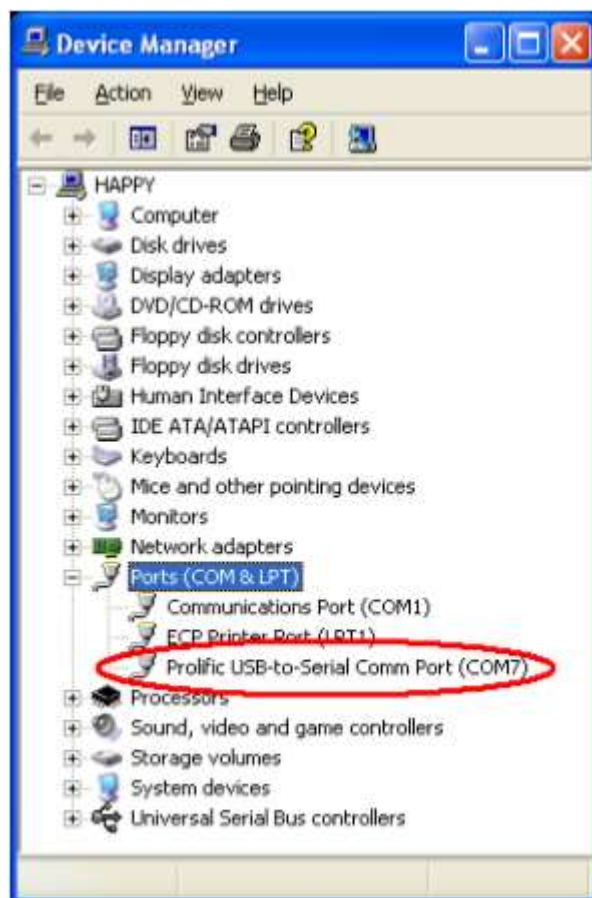
Software Requirements and Setup

- 1) Start up windows 98//XP//7//8//10 operating system
- 2) Close all other application
- 3) Insert disk in CD drive



- 4) To install USB driver, click

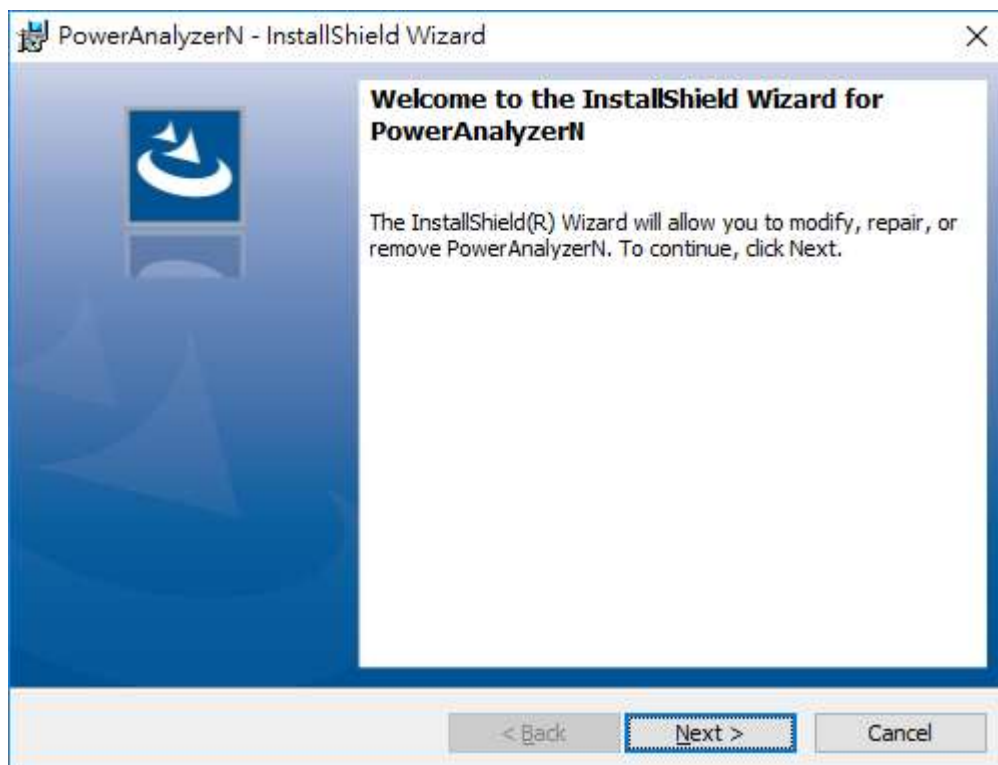
Drivers



- 5) To install meter software, Click . Setup program will run automatically.

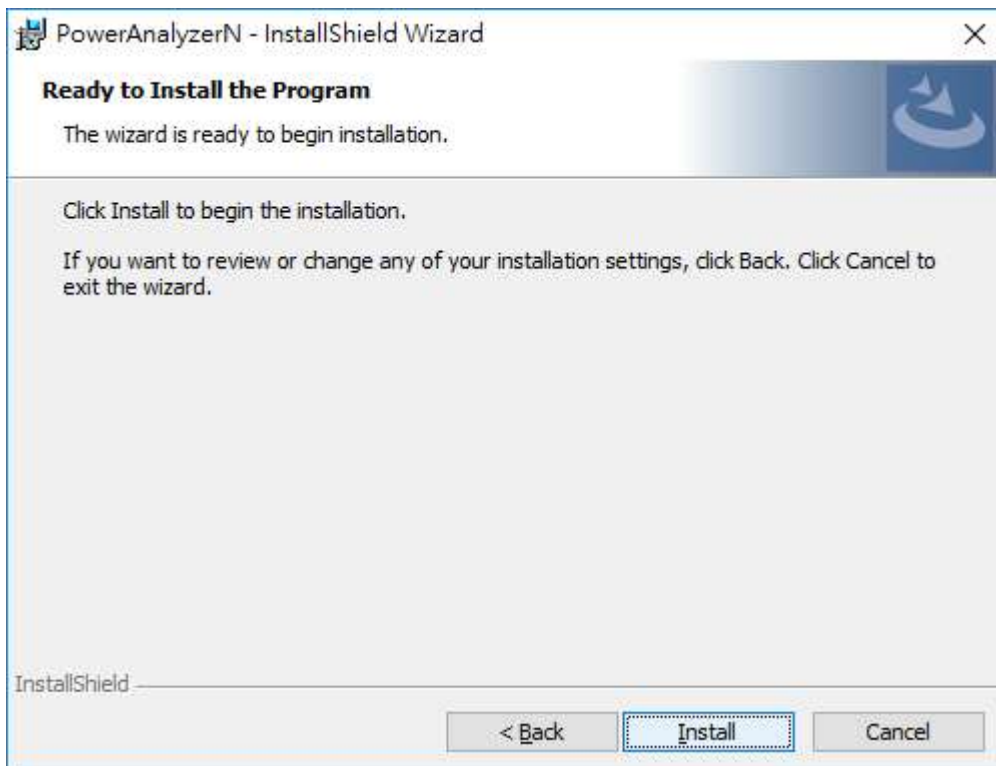


1.



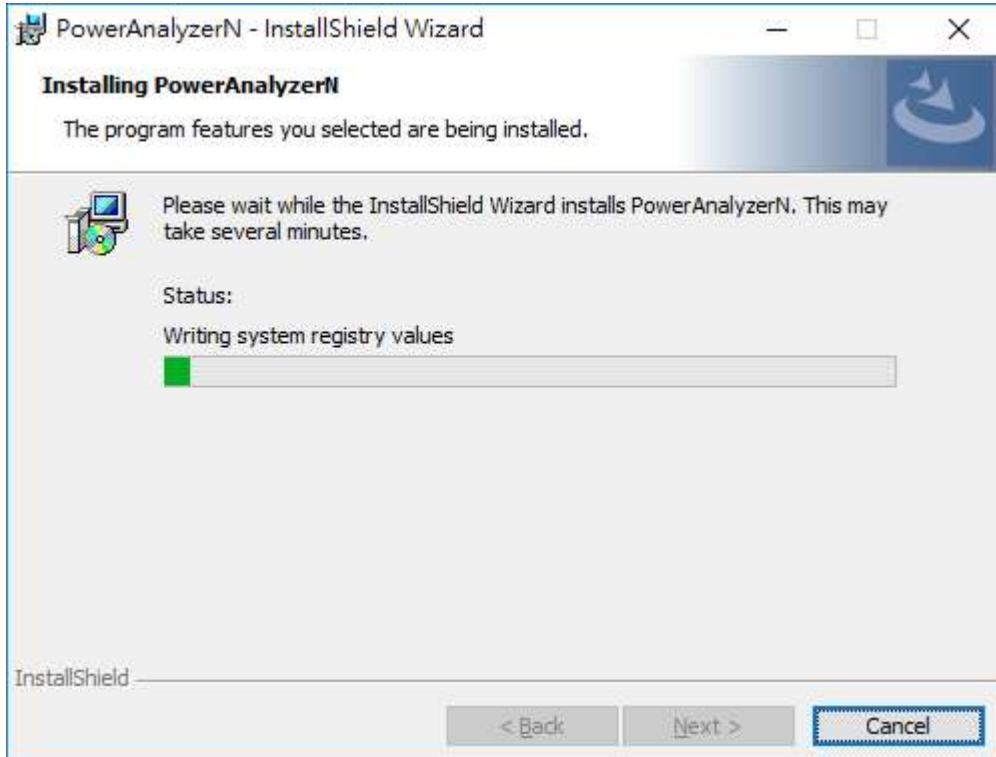
2.

Click "Next"

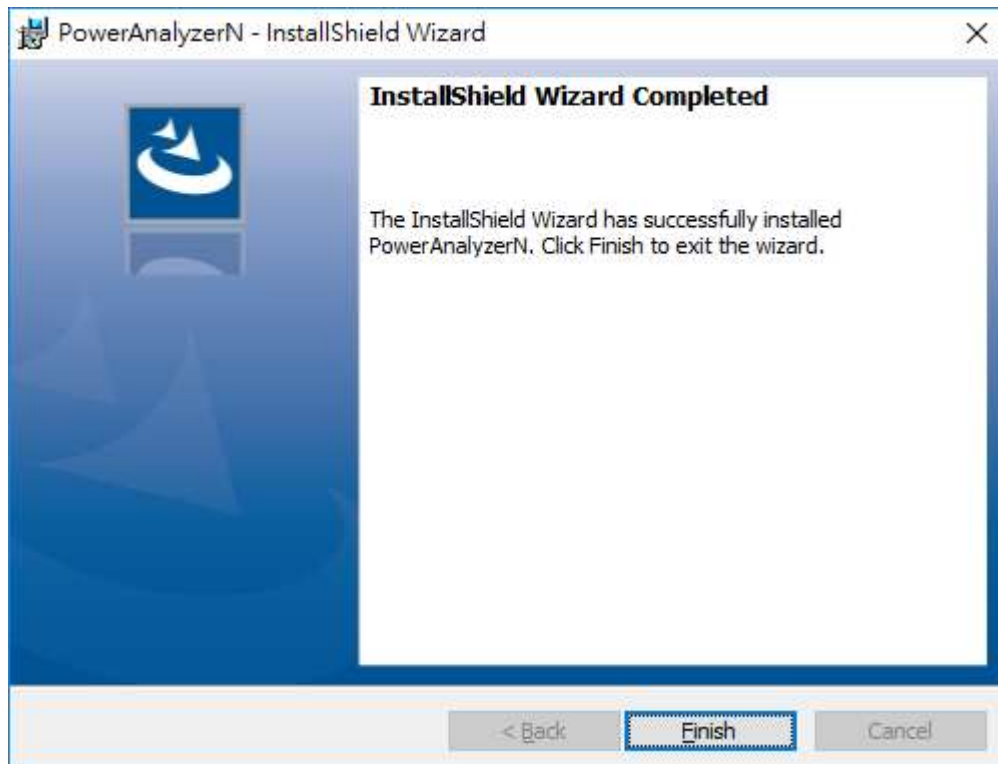


3.

Click "Install"



4.



5.

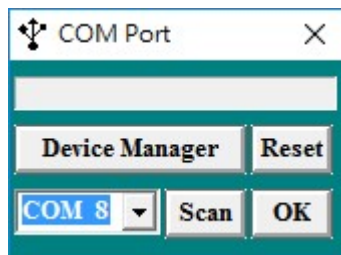
Click "Finish"

● Communication Operation

Run the software

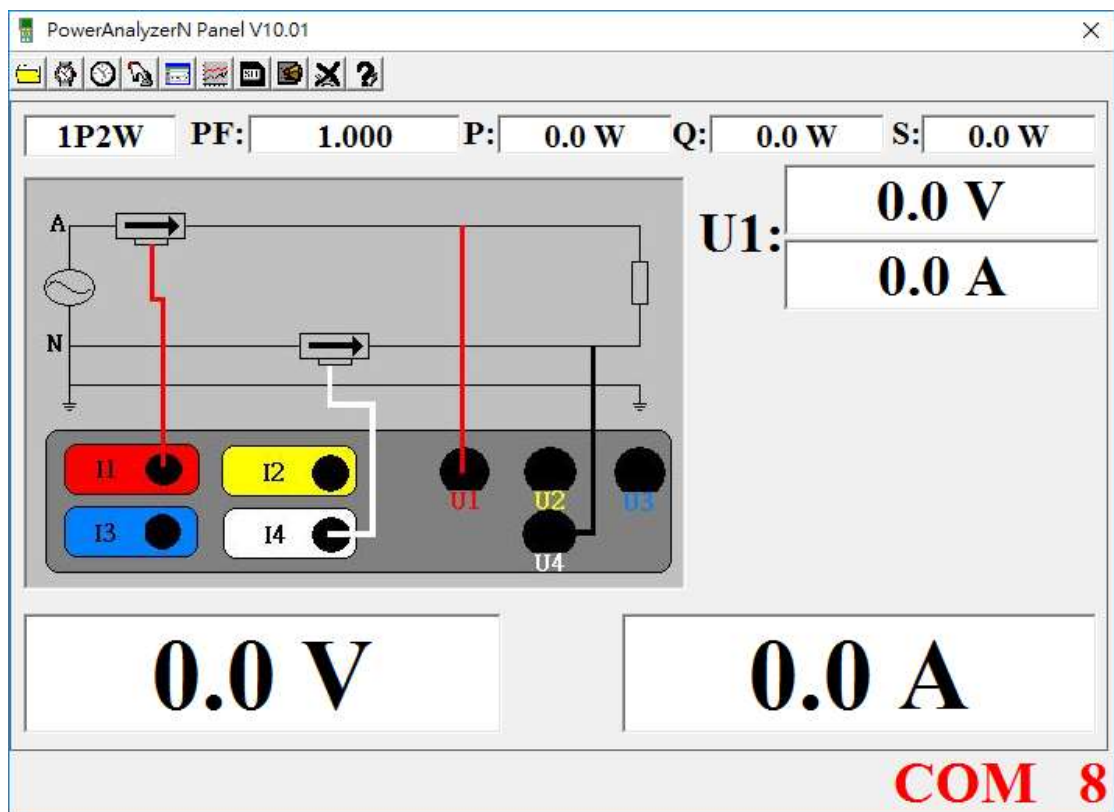


1. Click icon.




Select as available COM Port then click OK

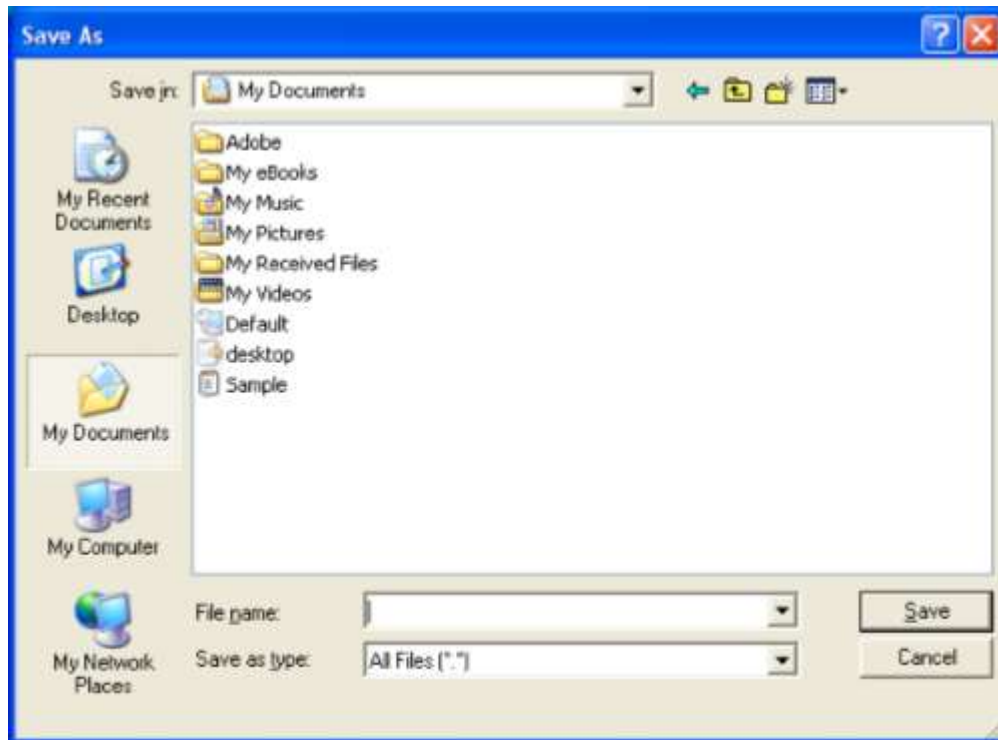
2. Main software screen

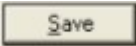


● Data Record

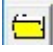
Save to H.D.D.

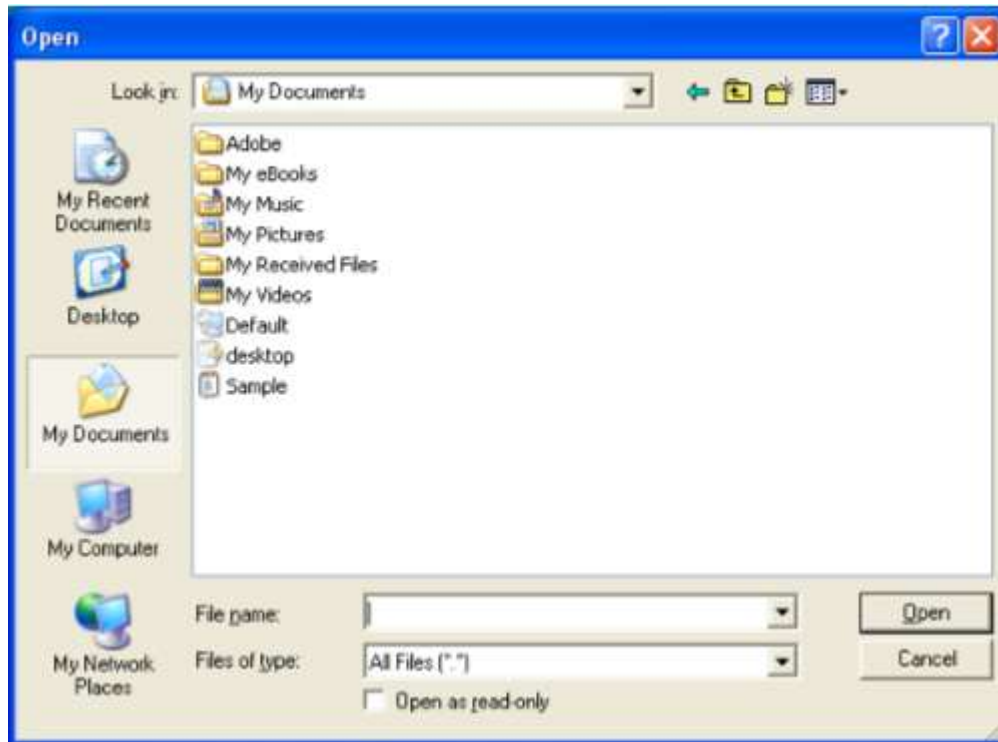
Click  button. The dialog box shown below will appear.



Input a file name and then Click  to begin saving data to the file just named.


● Download data

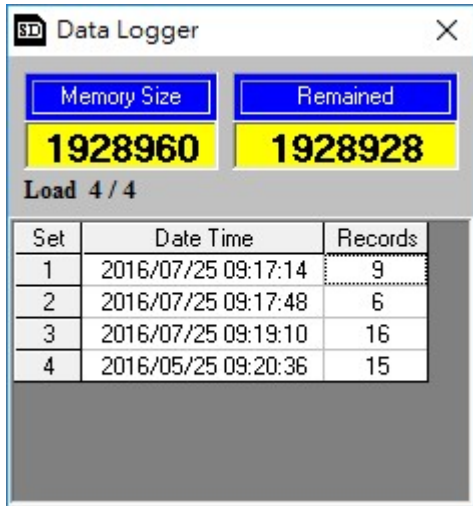
Click  button. The Open window, shown below, appears.



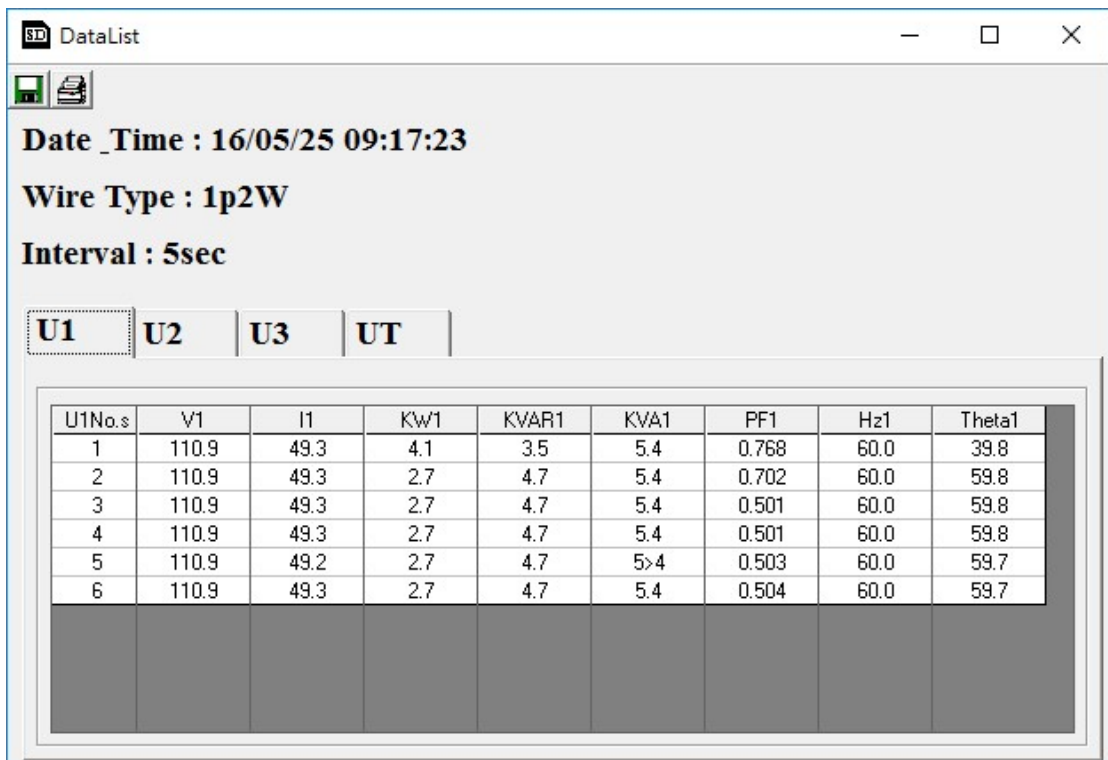
Input the file that was selected earlier and the click  to read.

● SD Card

Click  button. The Data Logger window, shown below, will open.



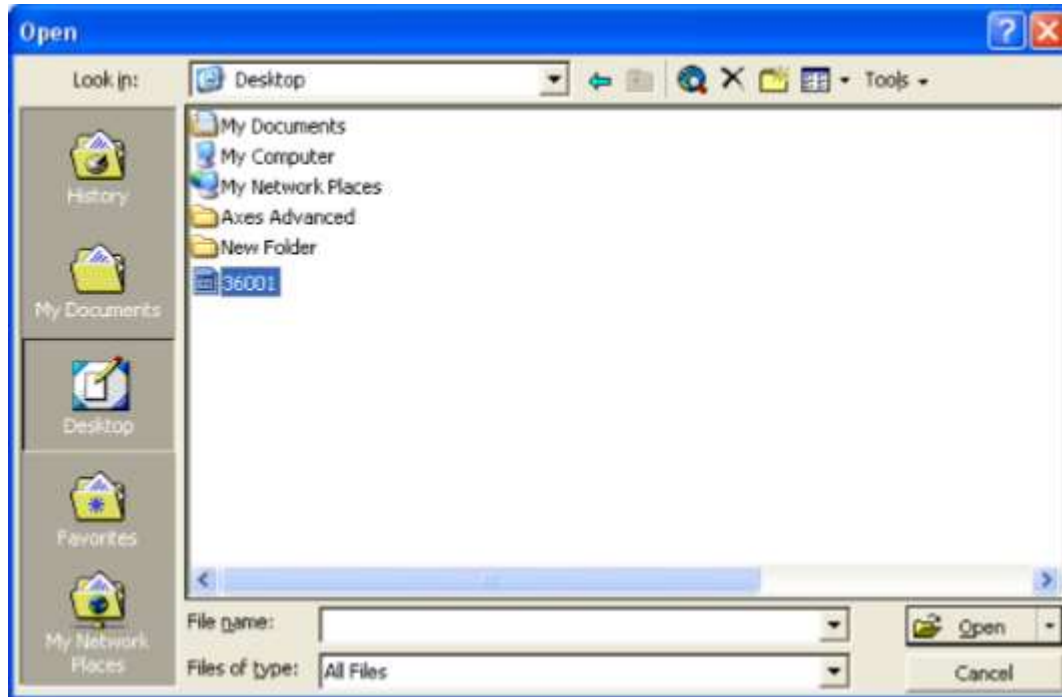
Click on a SET number to view the set's details. For example, in the window above, there are 2 sets from which to choose. The list below is an example of an opened set.



● Data Convert

Apply for Excel

Open Microsoft Excel, find the file saved, for example 3600N.pan




The “Text Import Wizard” then appears. Follow on-screen instructions.

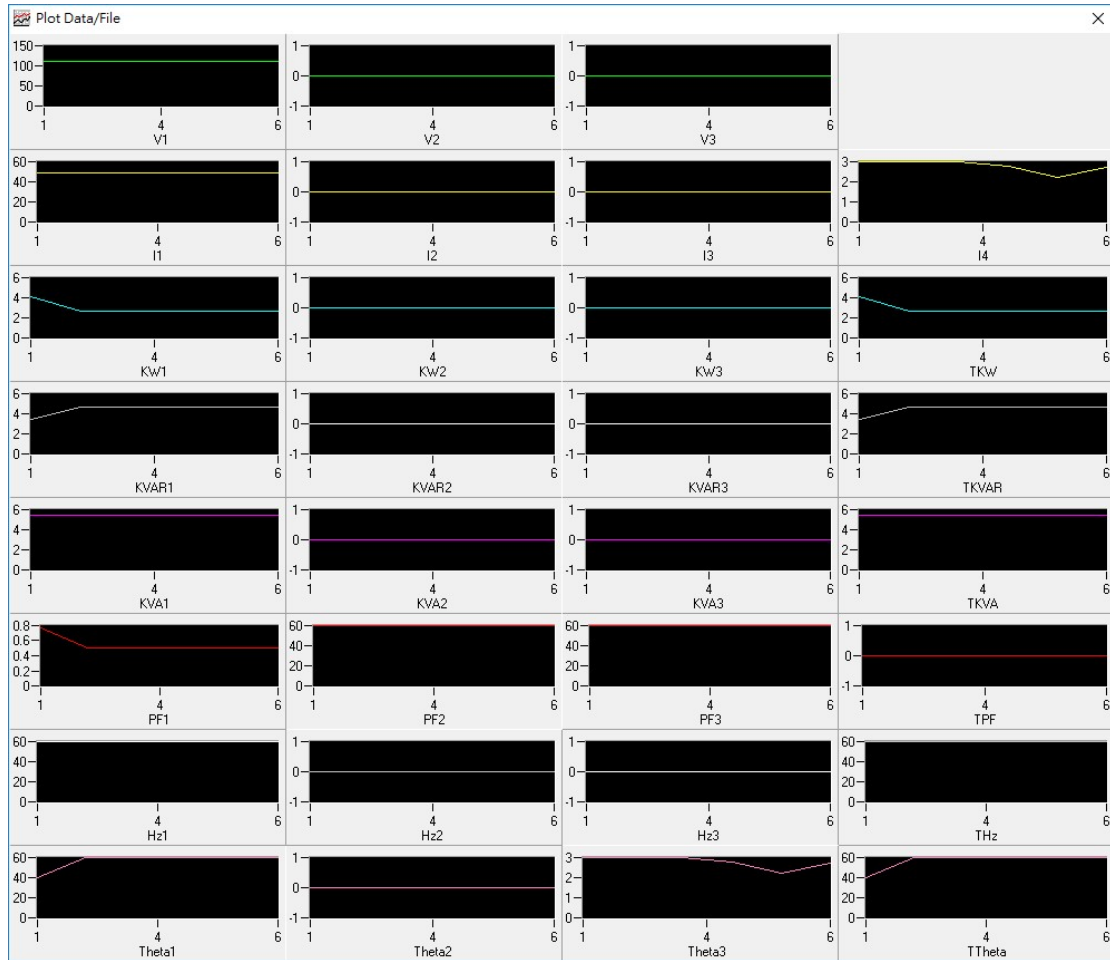


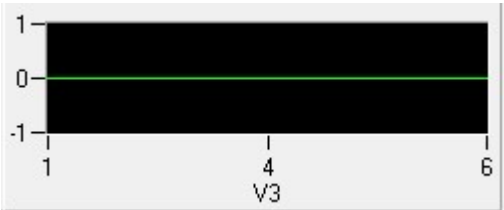
Click

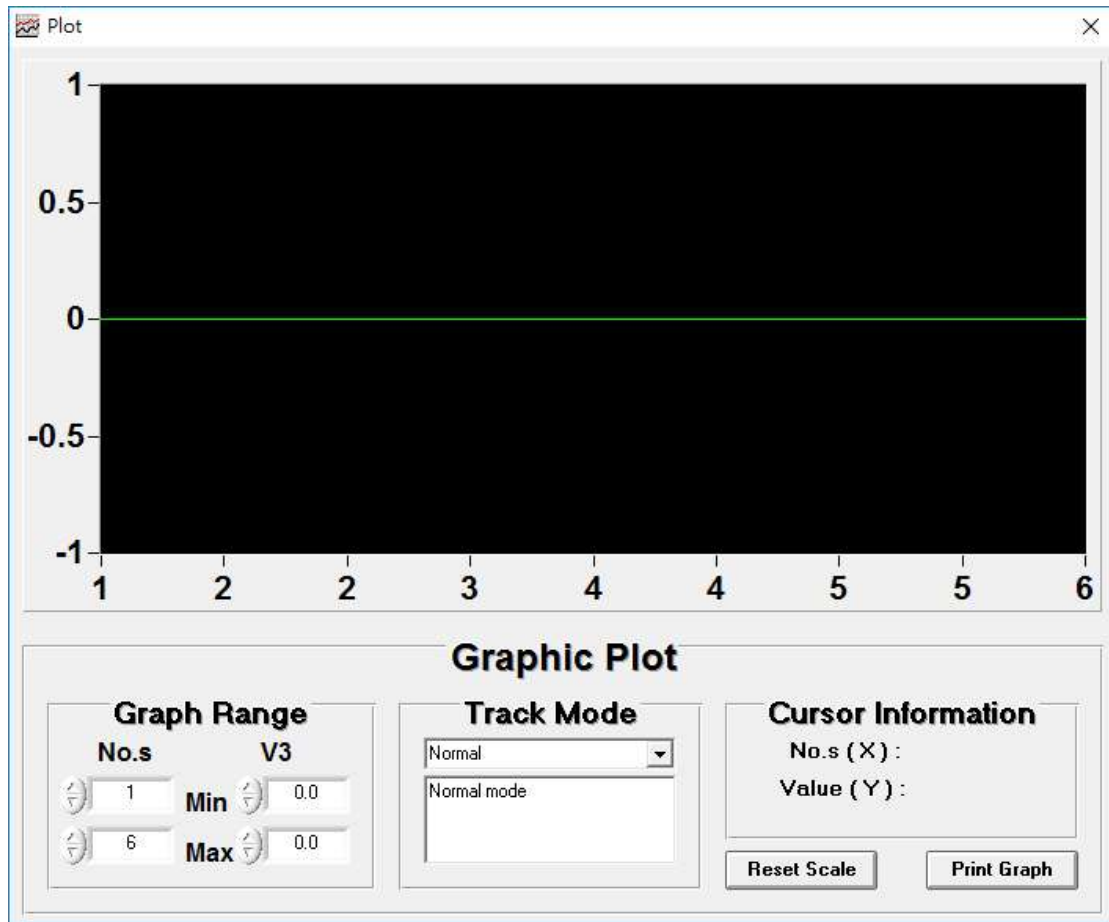
Next >

● Apply for Graph

Open a saved data file in the software program and then click .




Click  graphic.

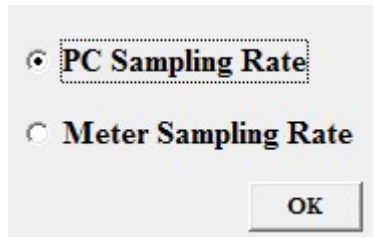



● Sampling Time

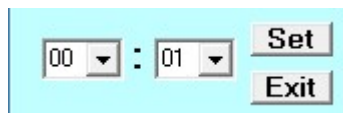
PC Sampling Rate:

(rate at which the PC collects readings while connected to the meter)

Click  on the Menu Bar.




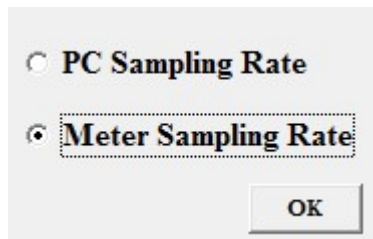
Click  button.



Click  button.

Meter Sampling Rate:

Click  on the Menu Bar.




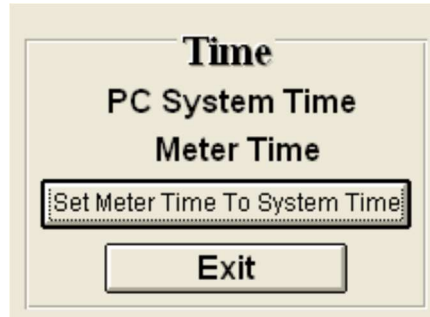
Click  button.



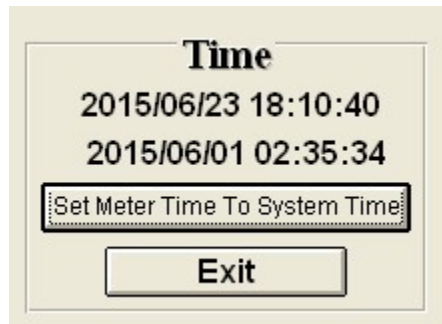
Click  button.

- **RTC (Real Time Clock)**

Click  on the **Menu Bar** to set the meter time to PC system time.




Click **PC System Time** to show PC System Time or **Meter Time** to show Meter Time.



Click  to set the meter time to PC system time.

● Single Record

Click  button, On Menu Bar.

 Single Record ×

Print

Wire Type: 1P2w

Date Time : 16/05/25 09:16:11

1

	U1	U2	U3	I4
Electric Current	49.3	0.0	0.0	2.7
Voltage	110.9	0.0	0.0	Total
P	2.7	0.0	0.0	2.7
Q	4.7	0.0	0.0	4.7
S	5.4	0.0	0.0	5.4
PF	0.503	0.000	0.000	0.000
Hz	60.0	60.0	60.0	60>0
Theta	79.7	0.0	0.0	59.7

Click  button. Print form page.