

# Quick Start Guide

## EasyCoating

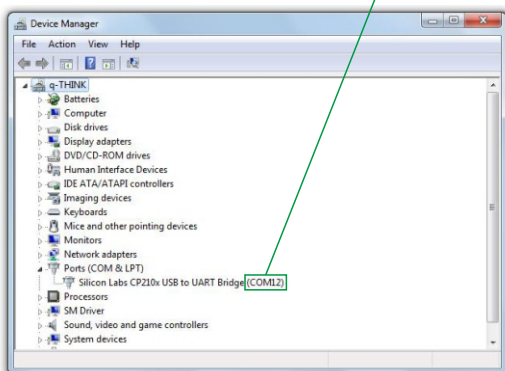
1. Place the CD into your PC CD-ROM drive.
2. Go to the file directory on the CD: CD->Driver->CP210x\_VCP\_Windows. Double-click the "CP210xVCPInstaller\_x86.exe" (for 32 bits operation system) or "CP210xVCPInstaller\_x64.exe" (for 64 bits operation system), and install the driver follow the prompts.



3. Go to the file directory on the CD: CD->Setup. Double-click the "setup.exe" to install the "Easycoating" software used to download readings to PC.



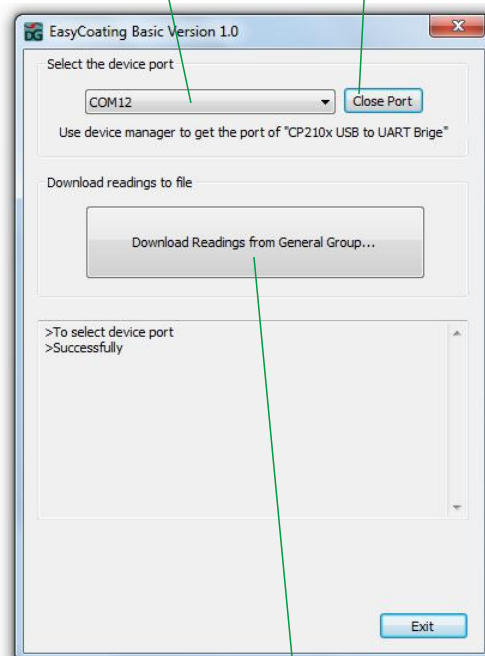
4. Connect the gauge with PC via USB and power on the gauge. Open the PC's device manager, and get the port(COM & LPT) number as shown in the figure below.



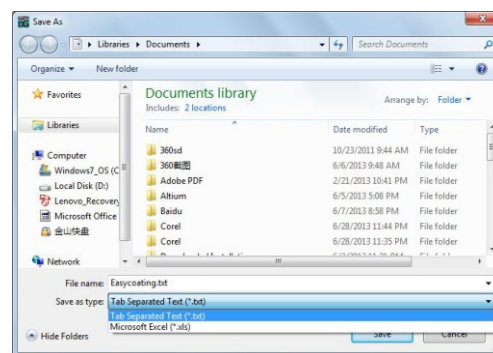
5. Double-click the "EasyCoating" icon on your desktop to start. To download readings according to the figure below step by step.

step 1: Select the port

step 2: Click to open the port, and you can see the "successfully" shown



step 3: Click to start to download readings



step 4: Save the readings