



Contents

1	System Requirements	10
2	Application	10
3	First Steps	10
4	Screen Explanation	11
5	Selecting The Com Port	12
6	Data transmission	12
7	Submenu “Company Address“	12
8	Submenu “Lograte”	13
9	Submenu “Update”	14
10	Selecting the language	14
11	Other functions	14
12	Points of sale and service	15

1 System Requirements

Description	Specification
Processor	Pentium 4 2.4 GHz and higher
RAM	512 MB or more
Others	Graphic board

2 Application

The Wöhler CDL 210 software helps to analyze the data measured by the Wöhler CDL 210. After starting the program the main screen will appear:

3 First Steps

- Before you can start to transmit the data, you have to install the USB driver.



Fig. 1: Rear side of the Wöhler CDL 210 with USB cable and power supply



NOTE!

For information about the installation of the USB-driver, see the manual USB cable. (art. n° 22354).

- Connect the Wöhler CDL 210 to the PC via the USB cable by plugging the cable plug into the socket at the rear side of the device and inserting the USB plug into the USB port of your computer.
- Start the software Wöhler CDL 210.

4 Screen Explanation

After the program has been started, the following main display will appear on screen:

EN

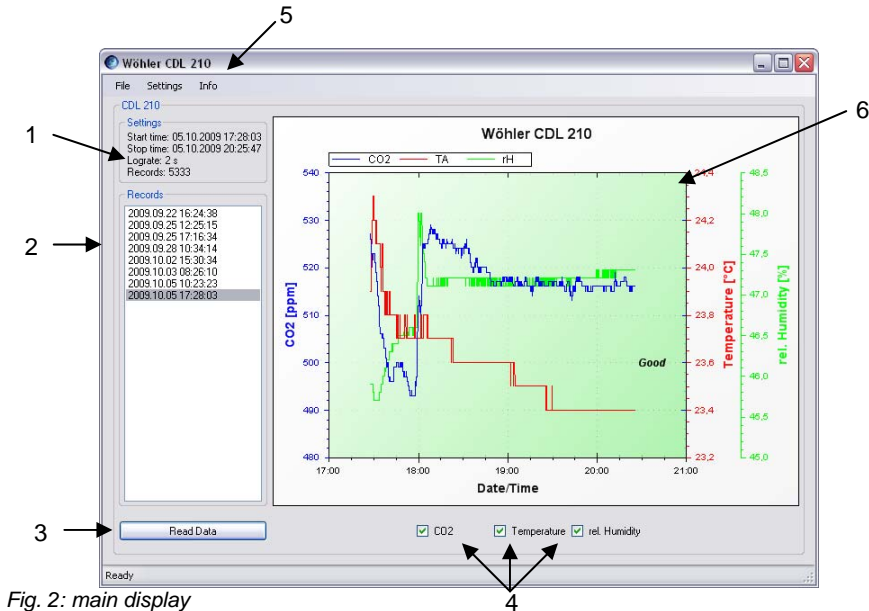


Fig. 2: main display

Number	Function
1	Settings of the selected logging process
2	Records
3	Read out the Data stored by the CDL 210
4	Selection of the list of measurement readings
5	Menu
6	Diagram The diagram can be scaled with the mouse wheel. Right mouse button: Menu

5 Selecting The Com Port

- To select the com port click **Settings > Com Port** in the menu bar (Fig. 2, Part 5)

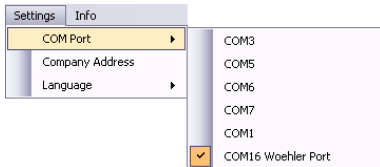


Fig. 3: Selecting the Com Port



NOTE!

If the selected com port is not indicated, the reason could be that the Wöhler CDL 210 was connected to the PC after the software had been started. In this case finish the software and start it again.

6 Data Transmission

- Click on „Read data“ to start the data transmission. (Fig. 2, part 3)

7 Submenu “Company Address“

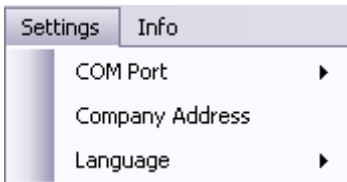


Fig. 4: Selecting the submenu company address

- Enter the submenu „Company Address“ selecting **Settings > Company Address**.

Company Address	
Company:	Wöhler MGKG GmbH
Address:	Schützenstraße 41
Zip, City:	33181 Bad Wünnenberg
Tel.:	+49 2953 73-211
Fax:	+49 2953 73-250
e-mail:	mgkg@woehler.de
Web:	mgkg.woehler.de

Buttons: Save, Close

Fig. 5: Company address

The contact data entered by the user will appear on the print-out.

8 Submenu "Lograte"

EN

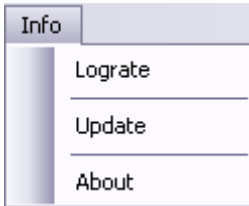


Fig. 6: Submenu "Lograte"

- Enter the submenu "Lograte" by selecting, Info > Lograte.

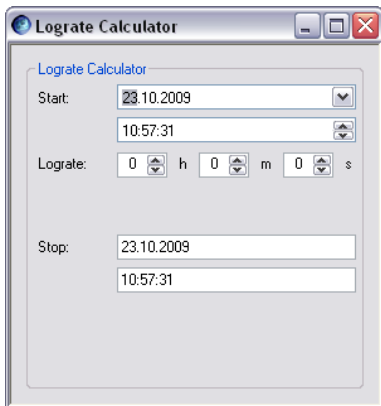


Fig. 7: Lograte calculator

- The Lograte Calculator helps to calculate the lograte that has to be set.
- The user sets the start time and the lograte.
- After that, the program will calculate the time (stop time) of the logging process.

9 Submenu "Update"

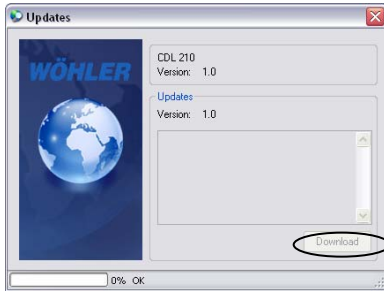


Fig. 8: Software update

When a new software version is available, the download button will be active and the actual software can be loaded.



NOTE!

The PC must be connected to the internet.

10 Selecting The Language

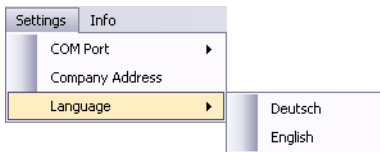


Fig. 9: Selecting the language

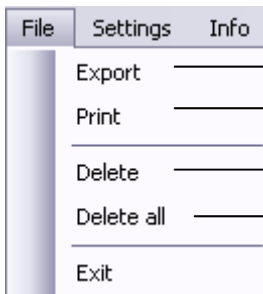
Click on **Settings > Language** to select between the german and the english language.



NOTE!

After the language has been changed, the program will start again.

11 Other Functions



Export the selected dates in CSV format

Print the selected data log

Delete data record

Delete all data records

Fig. 10: Menu "File"