



User Manual

Weather Station PCE-FWS 20N



User manuals in various languages (français, italiano, español, português, nederlands, türk, polski, русский, 中文) can be found by using our product search on: www.pce-instruments.com

Last change: 8 April 2020
v1.0



Contents

| | | |
|----------|---|-----------|
| 1 | Safety notes | 1 |
| 2 | Glossary of common terms | 2 |
| 3 | Delivery contents | 2 |
| 4 | Technical specifications | 3 |
| 5 | LCD description | 4 |
| 6 | Getting started | 5 |
| 6.1 | Before first use..... | 5 |
| 6.2 | Setting up the display and outdoor unit..... | 5 |
| 6.3 | Sensors..... | 6 |
| 6.4 | Install U-bolts and metal plate | 7 |
| 6.5 | Install wind speed cups | 8 |
| 6.6 | Install wind vane..... | 8 |
| 6.7 | Install batteries..... | 9 |
| 6.8 | Mount outdoor sensor | 10 |
| 6.9 | Reset button and outdoor unit LED | 11 |
| 6.10 | Basic operation | 11 |
| 6.11 | Best practices for wireless communication | 12 |
| 7 | Operation | 12 |
| 7.1 | Indoor temperature..... | 13 |
| 7.2 | Outdoor temperature | 14 |
| 7.3 | Indoor humidity..... | 15 |
| 7.4 | Outdoor humidity | 15 |
| 7.5 | Wind speed | 16 |
| 7.6 | Rain | 17 |
| 7.7 | Weather forecast..... | 18 |
| 7.8 | Pressure | 19 |
| 7.9 | Pressure bar graph | 20 |
| 7.10 | Time..... | 20 |
| 7.11 | Date | 20 |
| 7.12 | Memory..... | 21 |

| | | |
|-----------|---|-----------|
| 8 | Maintenance | 21 |
| 9 | PC connection | 21 |
| 9.1 | Data storage | 21 |
| 9.2 | Data recall..... | 21 |
| 9.3 | Connections and software | 22 |
| 9.4 | PC software installation..... | 22 |
| 10 | Software | 23 |
| 10.1 | System Requirements | 23 |
| 10.2 | Installation of the “EasyWeather” software | 23 |
| 10.3 | Basic settings of the PC software | 24 |
| 10.4 | System menu | 24 |
| 10.5 | Save..... | 28 |
| 10.6 | Troubleshooting: Graphs are not displayed | 30 |
| 10.7 | Data upload..... | 31 |
| 10.8 | Help option..... | 34 |
| 11 | Software on MAC OS | 35 |
| 11.1 | Installation of the “EasyWeather” software | 35 |
| 11.2 | Basic settings | 36 |
| 11.3 | Alarm settings | 36 |
| 11.4 | Max/Min display | 37 |
| 11.5 | Save..... | 37 |
| 11.6 | Graphical view..... | 38 |
| 11.7 | Data upload..... | 38 |
| 11.8 | Check software version | 39 |
| 11.9 | Special notes about time synchronization between PC/MAC and display | 39 |
| 12 | Contact | 40 |
| 13 | Disposal | 40 |



1 Safety notes

Please read this manual carefully and completely before you use the device for the first time. The device may only be used by qualified personnel and repaired by PCE Instruments personnel. Damage or injuries caused by non-observance of the manual are excluded from our liability and not covered by our warranty.

- The device must only be used as described in this instruction manual. If used otherwise, this can cause dangerous situations for the user and damage to the meter.
- The instrument may only be used if the environmental conditions (temperature, relative humidity, ...) are within the ranges stated in the technical specifications. Do not expose the device to extreme temperatures, direct sunlight, extreme humidity or moisture.
- Do not expose the device to shocks or strong vibrations.
- The case should only be opened by qualified PCE Instruments personnel.
- Never use the instrument when your hands are wet.
- You must not make any technical changes to the device.
- The appliance should only be cleaned with a damp cloth. Use only pH-neutral cleaner, no abrasives or solvents.
- The device must only be used with accessories from PCE Instruments or equivalent.
- Before each use, inspect the case for visible damage. If any damage is visible, do not use the device.
- Do not use the instrument in explosive atmospheres.
- The measurement range as stated in the specifications must not be exceeded under any circumstances.
- Non-observance of the safety notes can cause damage to the device and injuries to the user.

We do not assume liability for printing errors or any other mistakes in this manual.

We expressly point to our general guarantee terms which can be found in our general terms of business.

If you have any questions please contact PCE Instruments. The contact details can be found at the end of this manual.

2 Glossary of common terms

DCF/WWVB

The DCF or WWVB time signal is an AM modulated time-of-day signal broadcasted by the Federal Government of Germany, NIST from USA or National Physical Laboratory. The time base is generated from an atomic time generator which is accurate to 10 billion of one second.

LCD

"LCD" is an acronym for "Liquid Crystal Display". This is a common type of display screen used in televisions, computers, watches, and digital clocks.

BAROMETER & BAROMETRIC PRESSURE

A barometer is a device that measures the pressure of the air pushing on it—this measurement is called the barometric pressure. We do not actually feel the barometric pressure because the air pressure is pushing equally in every direction.

RELATIVE AIR PRESSURE

Relative air pressure is the same as the barometric pressure. The calculation of relative air pressure is a combination of the absolute air pressure and the altitude.

ABSOLUTE AIR PRESSURE

Absolute air pressure is the actual air pressure on the barometer without regard to altitude.

INCHES OF MERCURY (inHg)

An inch of mercury is the common unit of measurement for air pressure in the United States.

HECTOPASCALS (hPa)

Hectopascals are the common unit of measurement for air pressure in the International System (SI) of measurement. The hectopascal holds the same value as mbar.

3 Delivery contents

- 1 x display (receiver)
- 1 x solar panel
- 1 x wind direction sensor
- 1 x wind speed sensor
- 1 x rain gauge
- 1 x thermo-hygro sensor
- 1 x USB cable

The software for the weather station PCE-FWS 20N can be downloaded here:

https://www.pce-instruments.com/english/download-win_4.htm



4 Technical specifications

Outdoor data

| | |
|--|--|
| Transmission distance in open field | 100 m (300 feet) |
| Frequency | 868 MHz |
| Temperature range | -40 ... 60 °C (-40 ... +140 °F) |
| Resolution | 0.1 °C (0.2 °F) |
| Accuracy | ± 1 °C (33.8 °F) |
| Rel. humidity range | 1 ... 99 % |
| Accuracy | ±4 % in range 20 ... 80 % RH, ±6 % in other ranges |
| Rain volume display | 0 ... 9999 mm (shows --- if outside range) |
| Resolution | 0.3 mm (if rain volume <1000 mm) 1 mm (if rain volume >1000 mm) |
| Accuracy | ±6 % |
| Wind speed range | 0...50 m/s (0...100 mph) (shows --- if outside range) |
| Accuracy | ±1 m/s (wind speed <5 m/s) ±10 % (wind speed >5 m/s) |
| Measuring interval thermo-hygro sensor | 48 s |
| IP protection | IP44 |

Indoor data

| | |
|---|--|
| Measuring interval pressure / temperature | 48 s |
| Temperature range | 0 ... +50 °C (32 ... + 122 °F) (shows --- if outside range) |
| Resolution | 0.1 °C (0.2 °F) |
| Measuring range rel. humidity | 1 ... 99 % |
| Resolution | 1 % |
| Measuring range air pressure | 300 ... 1100 hpa (8.85 inHg ... 32.5 inHg) |
| Resolution | 0.1 hpa (0.01 inHg) |
| Accuracy | +/-3 hpa (absolute pressure, 700 ... 1100 hPa) |
| Alarm duration | 120 s |

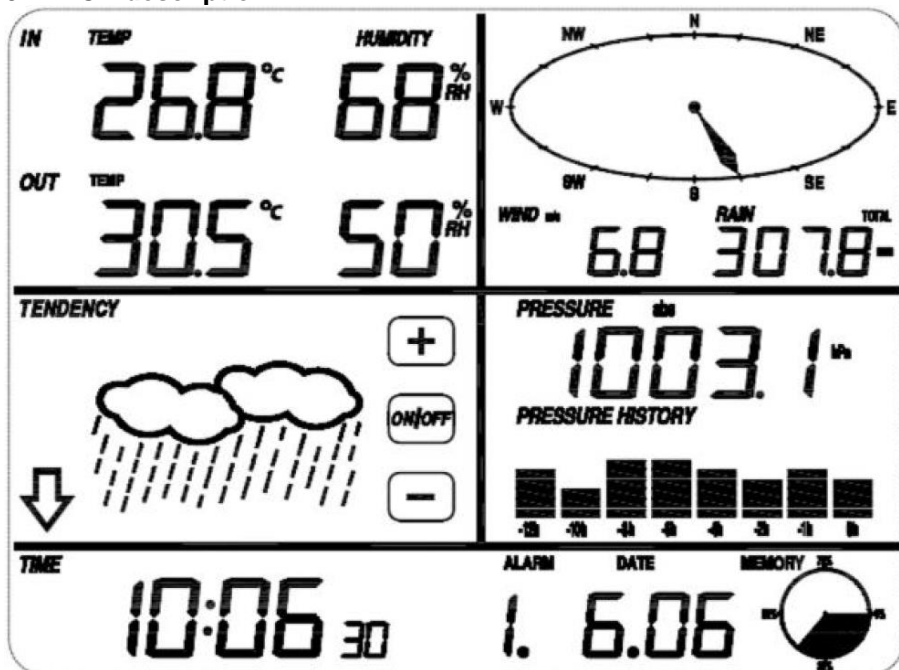
Power supply / consumption

| | |
|--------------|--|
| Display | 3 x AA 1.5 V LR6 Alkaline batteries |
| Outdoor unit | 2 x AA 1.5 V LR6 Alkaline batteries |
| Battery life | Minimum 12 months for display Minimum 24 months for thermo-hygro sensor |

Note

When the outdoor temperature is lower than -20 °C, make sure to use the correct type of batteries to assure that the device can get enough power to maintain its function properly.

5 LCD description



- Left top LCD: IN-OUT temperature and humidity
- Right top LCD: Wind and rain measurement
- Left middle LCD: Weather forecast (tendency)
- Right middle LCD: Air pressure and air pressure history
- Bottom line LCD: Time and date, memory usage

Note:

The presence of the "Alarm On" icon in a section means that the particular alarm has been enabled.



6 Getting started

6.1 Before first use

Before placing and installing all components of the weather station at their final destination, please set up the weather station with all parts being nearby for testing the correct function.

6.2 Setting up the display and outdoor unit

Insert two LR6 (AA size) batteries into the outdoor unit. The LED located in the middle of the bottom side of the case will be turned on for 4 seconds, then it will turn off and start to work normally. The outdoor unit will make a data transmission and then start radio controlled time reception routine. If a time signal can be detected correctly, the LED will flash 5 times and will then be on for 20 seconds, indicating that the time signal has been found correctly. When the time signal is bad and reception is not possible, the outdoor unit will terminate radio controlled time reception within one minute and resume normal mode. When data have been transmitted, the LED will be on for 20 ms. During radio controlled time reception period, there is no transmission and normal transmission will only resume after time reception routine is complete. The longest time for radio controlled time reception is 5 minutes.

After inserting the batteries into the weather station, all LCD segments will be turned on for a few seconds for self-checking. The meter will then return to normal measuring mode and only the display segments activated for the measurement will be active.

After this, the weather station will make an initial measurement and start to register the outdoor unit (the radio reception icon will be turned on). Do not press any key before outdoor sensor data are received, otherwise the outdoor sensor learning mode will be terminated. When the outdoor unit has been registered, the display will automatically switch to normal display mode from which all further settings can be performed by the user.

If no RCC/DCF signal is detected during the initial setup, the outdoor unit will try once every 6 hours to get an RCC/DCF signal. Once the outdoor unit receives the RCC/DCF signal, it will transmit the signal to the monitor. On the monitor, the RCC/DCF icon will be displayed. If the monitor does not receive the RCC/DCF signal or loses the signal, the RCC/DCF icon will not be displayed.

Register outdoor unit

If no outdoor weather data is displayed or the signal to the sensors is lost during setup or mounting, touch and hold the RESET button of the outdoor sensor and re-insert the batteries of the display to synchronize the display with the sensors. Without being synchronized, weather data will not be received.

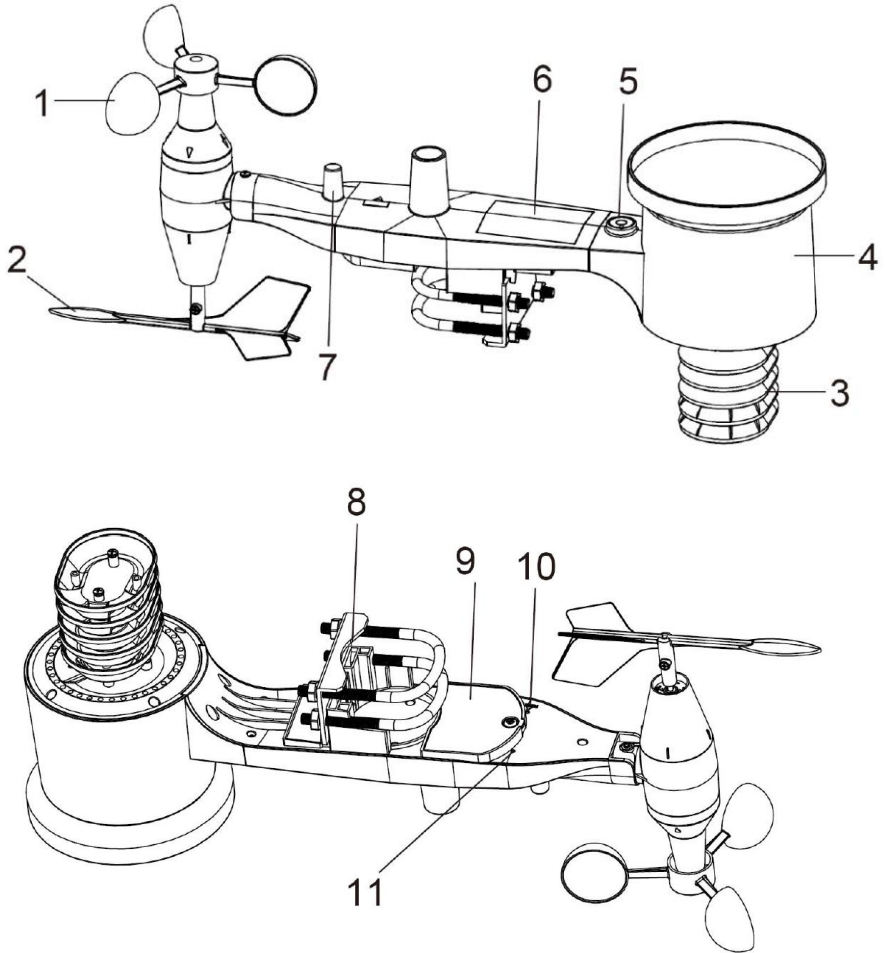
Note:

Wait for two minutes before re-inserting the batteries of the outdoor unit for proper reset.

Note:

The best condition for reception is at night, between midnight and 6:00 am, when there is less atmospheric interference.

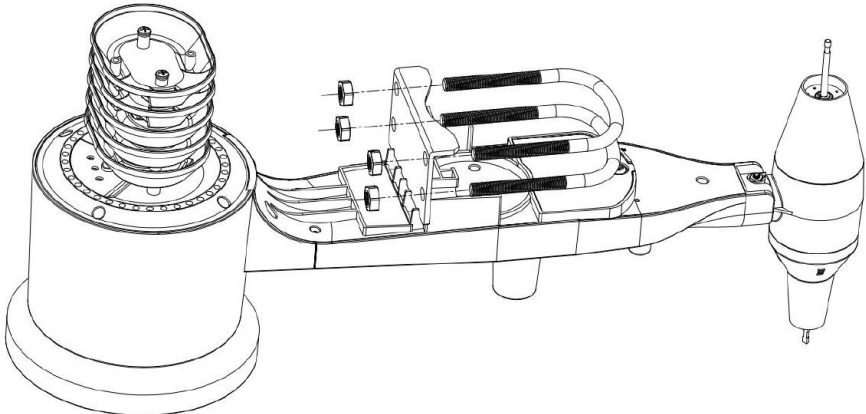
6.3 Sensors



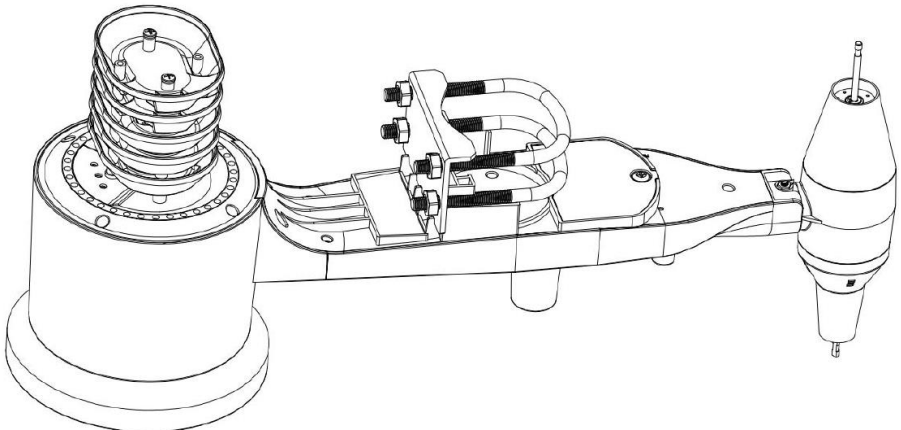
1. Wind speed sensor
2. Wind vane
3. Thermo-hygro sensor
4. Rain collector
5. Bubble level
6. Solar panel
7. Antenna
8. U-bolt
9. Battery compartment
10. Reset button
11. LED indicator: light on for 4 s during startup.
Then the LED will flash every 48 seconds (the sensor transmission update period).

6.4 Install U-bolts and metal plate

The U-bolts are used to attach the sensors to a pole. Installation of the U-bolts, which are in turn used to mount the sensor package on a pole, requires installation of the included metal plate to fix the U-bolt ends. The metal plate, visible in the first picture below, has four holes through which the ends of the two U-Bolts will fit. The plate itself is inserted into a groove at the bottom of the unit (opposite side of solar panel). Note that one side of the plate has a straight edge (which goes into the groove) whereas the other side is bent at a 90-degree angle and has a curved profile (which will end up surrounding the mounting pole). Once the metal plate is inserted, insert both U-bolts through the respective holes of the metal plate, as shown in the picture.



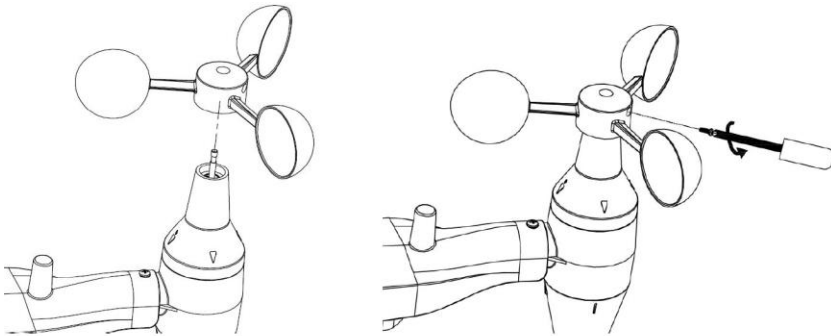
Loosely screw on the nuts on the ends of the U-bolts. You will tighten these later during final mounting. Final assembly is shown in the following picture.



The plate and U-Bolts are not yet needed at this stage but installing these now may help avoid damage to the wind vane and wind speed cups later on. Handling of the sensor package with wind vane and speed cups installed prior to installing these bolts is more difficult and more likely to lead to damage.

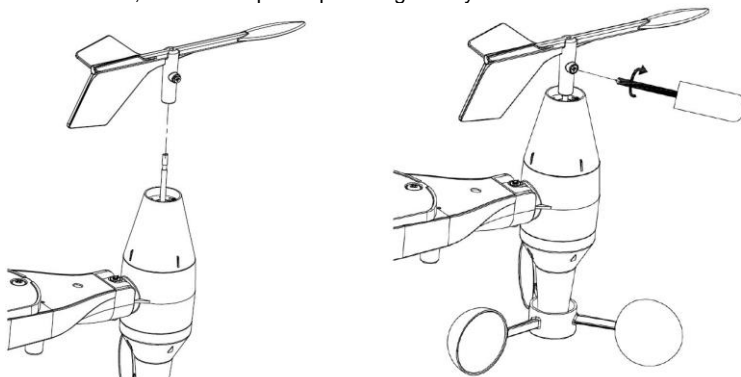
6.5 Install wind speed cups

Push the wind speed cup unit onto the shaft on the top side of the sensor package, as shown on the left side of the following picture. Tighten the set screw with a Philips screwdriver (size PH0), as shown on the right-hand side. Make sure the cup unit can rotate freely. There should be no noticeable friction when it is turning.



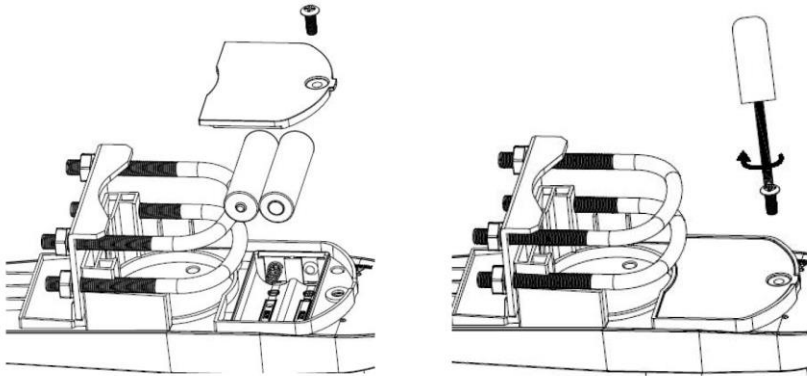
6.6 Install wind vane

Push the wind vane onto the shaft on the opposite side of the wind cups until it cannot be pushed any further, as shown on the left side in the next picture. Then tighten the set screw with a Philips screwdriver (size PH0), as shown on the right side, until the wind vane cannot be removed from the shaft. Make sure the wind vane can rotate freely. The wind vane's movement has a small amount of friction, which is helpful in providing steady wind direction measurements.



6.7 Install batteries

Open the battery compartment with a screwdriver and insert 2 AA batteries. The LED indicator on the back of the sensor package will turn on for four seconds and then flash once every 48 seconds, indicating sensor data transmission (sensor transmission update period).



Note:

If the LED does not light up or glows permanently, make sure the battery is inserted correctly and completely. Do not install the batteries backwards as this may permanently damage the outdoor sensor.

Note:

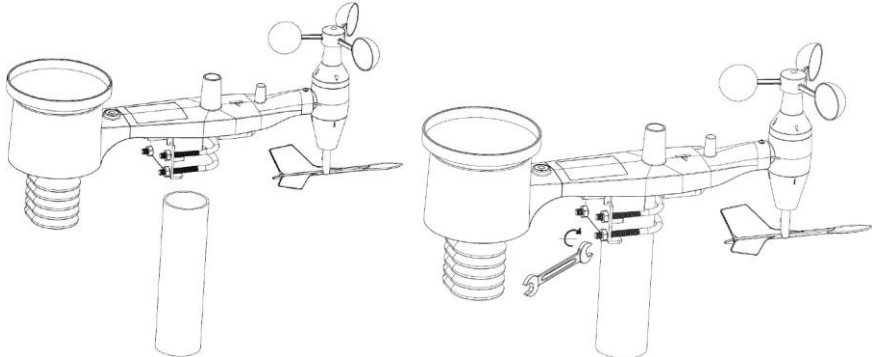
We recommend lithium batteries for cold weather climates, but alkaline batteries are sufficient for most climates. Rechargeable batteries have lower voltages and should never be used.

6.8 Mount outdoor sensor

Before proceeding with the outdoor sensor mounting detailed in this section, you need to make sure the display can receive data from outdoor sensor, while you keep the assembled outdoor sensor package nearby (although preferably not closer than 1.5 m from the display). This will make any troubleshooting and adjustments easier and avoids any distance or interference related issues from the system.

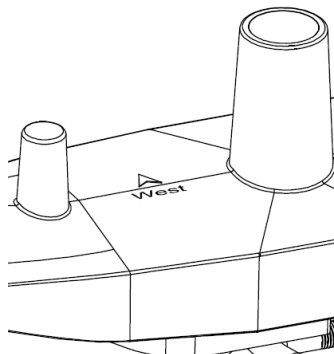
After setup is complete and everything is working, return here for outdoor sensor mounting. If issues show up after outdoor sensor mounting, they are almost certainly related to distance, obstacles etc.

As you can see in the next picture, the mounting assembly includes two U-bolts and a bracket that tightens around a 1 to 2" diameter pole (not included) using the four U-bolt nuts.



Note

Next to the antenna, there is an arrow icon with "WEST" written below it (next picture), representing the direction of west. The sensor body has to be adjusted so that the "WEST" indication faces the real west direction in your location. A compass device is recommended to help adjust the direction. A permanent wind direction error will occur when the outdoor sensor is not installed in the right direction.



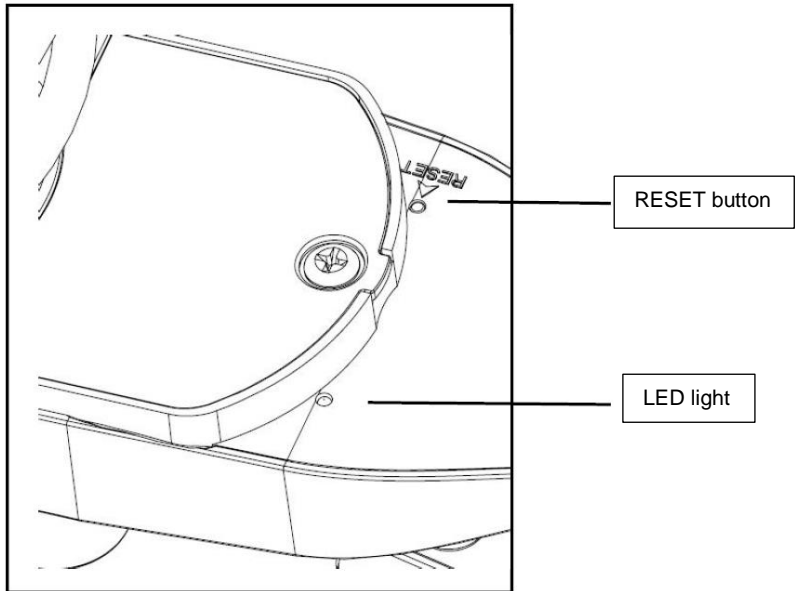


Now look at the bubble level. The bubble should be fully inside the red circle. If it is not, wind direction, speed and rain readings may not be correct or accurate. Adjust the mounting pipe as required. If the bubble is close but not quite inside the circle and you cannot adjust the mounting pipe, you may have to experiment with small wooden or heavy cardboard shims between the sensor package and the top of the mounting pole to achieve the desired result (this will require loosening the bolts and some experimentation).

Make sure you check and - if necessary - correct the westward orientation as the final installation step and tighten the bolts with a wrench.

6.9 Reset button and outdoor unit LED

Using a bent-open paperclip, touch and hold the RESET button (see picture) to do a reset: the LED turns on while the RESET button is pressed. You can then release it. The LED should then resume as normal, flashing approximately once every 48 seconds.



6.10 Basic operation

All actions and functions of the weather station are started on the touch screen by slightly touching (not pressing!) the related areas. Touch the flashing “+”, “ON/OFF” or “-” icons to make a selection or to increase/decrease a value. Everytime a programming step is activated by touching a switching area on the touch screen, a tone will sound and the backlight is switched on for a few seconds. If no areas are pressed for 30 seconds, the LCD will automatically revert to normal display mode (automatic timeout).

6.11 Best practices for wireless communication

Note:

To ensure proper communication, mount the remote sensor(s) upright on a vertical surface such as a wall. Do not lay the sensor flat.

Wireless communication is susceptible to interference, distance, walls and metal barriers. We recommend the following best practices for trouble-free wireless communication.

1. **Electro-Magnetic Interference (EMI):** Keep the display several feet away from computer monitors and TVs.
2. **Radio Frequency Interference (RFI):** If you have other 433/868/915 MHz devices and communication is intermittent, try turning off these other devices. You may need to relocate the outdoor units or receivers to avoid intermittent communication.
3. **Line of Sight Rating:** This device is rated at 300 feet line of sight (no interference, barriers or walls) but typically, you will get 100 feet maximum under most real-world installations, which include passing through barriers or walls.
4. **Metal Barriers:** Radio frequency will not pass through metal barriers such as aluminum siding. If you have metal siding, align the outdoor unit and display through a window to get a clear line of sight.

The following is a table of the transmission medium vs. reception loss. Each “wall” or obstruction decreases the transmission range by the factor shown below.

| Medium | RF signal strength reduction |
|-------------------|------------------------------|
| Glass (untreated) | 5 ... 15 % |
| Plastics | 10 ... 15 % |
| Wood | 10 ... 40 % |
| Brick | 10 ... 40 % |
| Concrete | 40 ... 80 % |
| Metal | 90 ... 100 % |

7 Operation

Note:

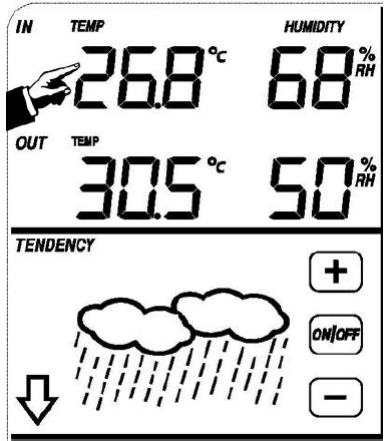
Because of the default settings already determined by the manufacturer, it may not be necessary for the majority of users to perform – except the relative air pressure (see further down) - any further basic settings. Changes, however, can be easily made.

For basic settings, the following menu is started by touching the touch screen in the desired display area.

The basic settings can now be performed in the following successive order:

Note:

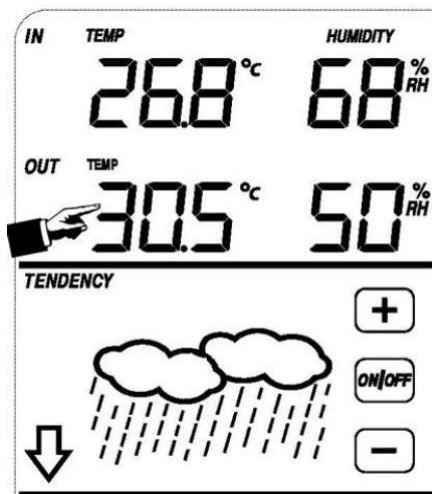
The setting procedure can be exited at any time by touching any other function area (except “+”, “-” or “ON/OFF”).



Make indoor temperature settings as follows:

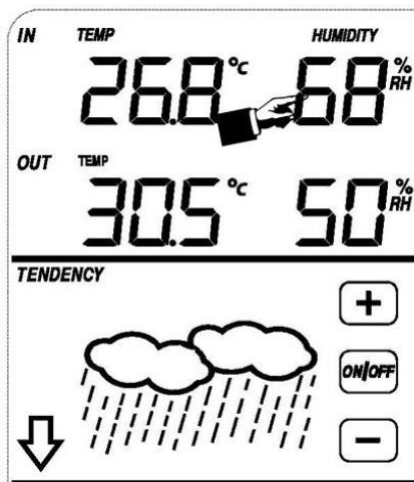
- 1) Touch the INDOOR TEMPERATURE section, the + and – buttons will be flashing. Touch the + or – button to change the display unit (°C or °F).
- 2) Touch the INDOOR TEMPERATURE section again to set the indoor temperature high alarm function, the +, ON/OFF and – buttons will be flashing, the HI AL icon will light up. Touch the+ or – button to change the value, hold the+ or – button for 3 s to change the number in larger steps. Touch the ON/OFF button to turn the alarm on or off (if alarm is enabled, the speaker icon will be turned on, indicating the alarm function has been enabled).
- 3) Touch the INDOOR TEMPERATURE section the third time to set the indoor temperature low alarm function, the +, ON/OFF and – buttons will be flashing, the LO AL icon will light up. Touch the+ or – button to change the value, touch and hold the+ or – button for 3 s to change the number in larger steps. Touch the ON/OFF button to turn the alarm on or off (if alarm is enabled, the speaker icon will be turned on).
- 4) Touch the INDOOR TEMPERATURE section the fourth time to display the maximum indoor temperature record. The maximum record will flash and the MAX icon will light up. After holding the flashing MAX value for 3 s, the maximum value will be reset to current reading.
- 5) Touch the INDOOR TEMPERATURE section the fifth time to display the minimum indoor temperature record. The minimum record will flash and the MIN icon will light up. After holding the flashing min value for 3 s, the minimum value will be reset to current reading.

7.2 Outdoor temperature



Make outdoor temperature settings as follows:

- 1) Touch the OUTDOOR TEMPERATURE section, the + and – buttons will flash. Touch the + or – button to shift the display between outdoor temperature, wind chill and dew point.
- 2) Touch the OUTDOOR TEMPERATURE section again, the + and – buttons will flash. Touch the + or – button to shift the display unit between °C and °F.
- 3) Touch the OUTDOOR TEMPERATURE section the third time to set the outdoor temperature high alarm function. The +, ON/OFF and – buttons will flash, the HI AL icon will light up. Touch the + or – button to change the value, hold the + or – button for 3 s to change the number in larger steps. Touch the ON/OFF button to turn the alarm on or off (if alarm is enabled, the speaker icon will be turned on, indicating the alarm function has been enabled).
- 4) Touch the OUTDOOR TEMPERATURE section the fourth time to set the outdoor temperature low alarm function. The +, ON/OFF and – buttons will flash, the LO AL icon will light up. Touch the + or – button to change the value, touch and hold the + or – button for 3 s to change the number in larger steps. Touch the ON/OFF button to turn the alarm on or off (if alarm is enabled, the speaker icon will be turned on).
- 5) Touch the OUTDOOR TEMPERATURE section the fifth time to display the maximum outdoor temperature record. The recorded maximum value will flash, the MAX icon will light up. After holding the flashing MAX value for 3 s, the maximum value will be reset to current reading.
- 6) Touch the OUTDOOR TEMPERATURE section the sixth time to display the minimum outdoor temperature record. The recorded minimum value will flash, the MIN icon will light up. After holding the minimum value for 3 s, the minimum value will be reset to current reading.



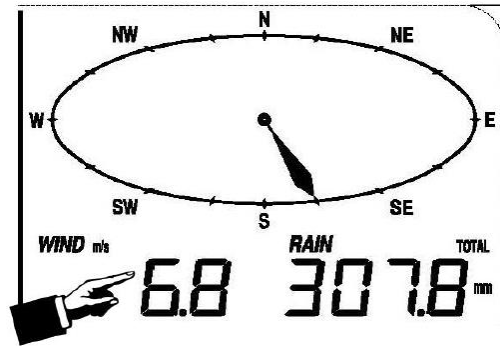
Make indoor humidity settings as follows:

- 1) Touch the INDOOR HUMIDITY section to set the indoor humidity high alarm function. The +, ON/OFF and – buttons will flash, the HI AL icon will light up. Touch the + or – button to change the value, touch and hold the + or – button for 3 s to change the number in larger steps. Touch the ON/OFF button to turn the alarm on or off (if alarm is enabled, the speaker icon will be turned on, indicating the alarm function has been enabled).
- 2) Touch the INDOOR HUMIDITY section again to set the indoor humidity low alarm function. The +, ON/OFF and – buttons will flash, the LO AL icon will light up. Touch the + or – button to change the value, touch and hold the + or – button for 3 s to change the number in larger steps. Touch the ON/OFF button to turn the alarm on or off (if alarm is enabled, the speaker icon will be turned on, indicating the alarm function has been enabled).
- 3) Touch the INDOOR HUMIDITY section the third time to display the maximum indoor humidity record. The recorded maximum value will flash and the MAX icon will light up. After holding the maximum value for 3 s, the maximum value will be reset to current reading.
- 4) Touch the INDOOR HUMIDITY section the fourth time to display the minimum indoor humidity record. The recorded minimum value will flash and the MIN icon will light up. After holding the minimum value for 3 s, the minimum value will be reset to current reading.

7.4 Outdoor humidity

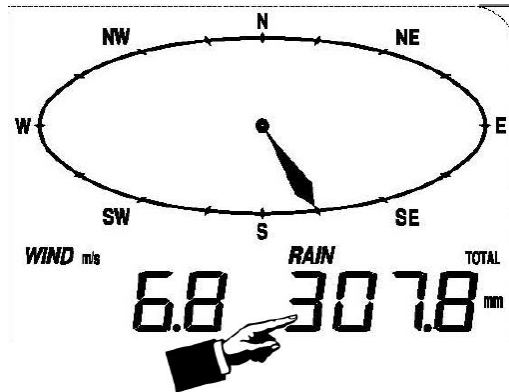
Procedures and settings are similar to indoor humidity.

7.5 Wind speed/direction



Make wind settings as follows:

- 1) Touch the WIND SPEED section, the + and – buttons will flash. Touch the + or – button to shift the display between average wind speed and gust speed.
- 2) Touch the WIND SPEED section again, the + and – buttons will flash. Touch the + or – button to select the wind speed unit: km/h, mph, m/s, knots or bft.
- 3) Touch the WIND SPEED section the third time to set the high alarm function, the +, ON/OFF and – button will flash, the HI AL icon will light up. Touch the + or – button to change the value, touch and hold the + or – button for 3 s to change the number in larger steps. Touch the ON/OFF button to turn the alarm on or off (if alarm is enabled, the speaker icon will be turned on, indicating the alarm function has been enabled).
- 4) Touch the Wind SPEED section the fourth time to set the wind direction alarm function, the wind direction arrow will start flashing. Touch + or – to select the desired alarm for the wind direction. Press ON/OFF to enable or disable the wind direction alarm.
- 5) Touch the Wind SPEED section the fifth time to display the maximum wind speed record. The recorded maximum value will flash and the MAX icon will light up. After holding the maximum value for 3 s, the maximum value will be reset to current reading.

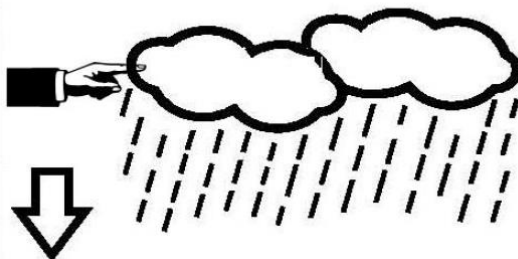


Make rain settings as follows:

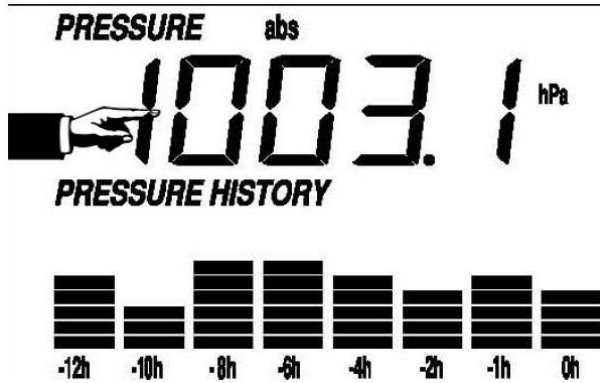
- 1) Touch the RAIN section, the + and – buttons will flash. Touch the + or – button to shift the display between 1 h, 24 h, week, month and total rain.
- 2) Touch the RAIN section again. The + and – buttons will flash. Touch the + or – button to select the rainfall unit: mm or inch.
- 3) Touch the RAIN section the third time to set the high alarm function. The +, ON/OFF and – buttons will flash and the HI AL icon will light up. Touch the + or – button to change the value, hold the + or – button for 3 s to change the number in larger steps. Touch the ON/OFF button to turn the alarm on or off (if alarm is enabled, the speaker icon will be turned on, indicating the alarm function has been enabled).
- 4) Touch the RAIN section the fourth time to display the current maximum rainfall record. Touch the flashing MAX value for 3 s to reset the maximum rainfall value to current value.
- 5) Touch the RAIN section the fifth time to reset the rainfall value to 0 by holding the flashing reading for 3 s. Then 1 h, 24 h, week, month and total rain will be reset to 0.

7.7 Weather forecast

TENDENCY



- 1) Touch the TENDENCY section. The + and – buttons will flash. Touch the + or – button to switch the displayed icon between SUNNY, PARTLY CLOUDY, CLOUDY and RAINY.
- 2) Touch the TENDENCY section again. The + and – buttons will flash. Touch the + or – button to set the pressure threshold from 2 ... 4 hPa (default: 2 hPa).
- 3) Touch the TENDENCY section the third time. The + and – button will flash. Touch the + or – button to set the storm threshold from 3. ... 9 hPa (default: 4 hPa).



- 1) Touch the PRESSURE section. The + and – buttons will flash. Touch the + or – button to shift the display between absolute pressure and relative pressure.
- 2) Touch the PRESSURE section again. The + and – buttons will flash. Touch the + or – button to shift the display unit between hPa, inHg and mmHg.
- 3) Touch the PRESSURE section the third time to set the relative pressure value. The + and – buttons will flash, the “rel” icon will light up. Touch the + or – button to change the value. Hold the + or – button for 3 s to change the number in larger steps.
- 4) Touch the PRESSURE section the fourth time to set the pressure high alarm function. The +, ON/OFF and – buttons will flash and the HI AL icon will light up. Touch the + or – button to change the value, hold the + or – button for 3 s to change the number in larger steps. Touch the ON/OFF button to turn the alarm on or off (if alarm is enabled, the speaker icon will be turned on, indicating the alarm function has been enabled).
- 5) Touch the PRESSURE section the fifth time to set the pressure low alarm function. The +, ON/OFF and – buttons will flash and the LO AL icon will light up. Touch the + or – button to change the value, hold the + or – button for 3 s to change the number in larger steps. Touch the ON/OFF button to turn the alarm on or off (if alarm is enabled, the speaker icon will be turned on, indicating the alarm function has been enabled).
- 6) Touch the PRESSURE section the sixth time to display the maximum pressure record. The recorded maximum value will flash and the MAX icon will light up. After holding the maximum value for 3 s, the maximum value will be reset to current reading.
- 7) Touch the PRESSURE section the seventh time to display the minimum pressure record. The recorded minimum value will flash and the MIN icon will light up. After holding the minimum value for 3 s, the minimum value will be reset to current reading.

Note:

When absolute pressure is selected, step 3 will be skipped.

7.9 Pressure bar graph

Touch the PRESSURE BAR GRAPH section and then press + or – to toggle the bar graph time scale between 12 hrs or 24 hrs for pressure history.

7.10 Time



- 1) Touch the TIME section. The + and – buttons will flash. Touch the + or – button to adjust the contrast level between 0 and 8. (default: 5)
- 2) Touch the TIME section again. The + and – buttons will flash. Touch the + or – button to set the time zone.
- 3) Touch the TIME section the third time. The + and – buttons will flash. Touch the + or – button to shift between 12/24 hours format.
- 4) Touch the TIME section the fourth time to set the hour. The + and – buttons will flash. Touch the + or – button to change the value.
- 5) Touch the TIME section the fifth time to set the minute. The + and – buttons will flash. Touch the + or – button to change the value.

7.11 Date



- 1) Touch the DATE section. The + and – buttons will flash. Touch the + or – button to shift between alarm time, date and weekday.
- 2) Touch the DATE section again, the + and – buttons will flash. Touch the + or – button to shift between DD-MM format and MM-DD format for the date.
- 3) Touch the DATE section the third time. The + and – buttons will flash. Touch the + or – button to set the year. Hold the + or – button for 3 s to change the number in larger steps.
- 4) Touch the DATE section the fourth time. The + and – buttons will flash. Touch the + or – button to set the month. Hold the + or – button for 3 s to change the number in larger steps.
- 5) Touch the DATE section the fifth time. The + and – buttons will flash. Touch the + or – button to set the day. Hold the + or – button for 3 s to change the number in larger steps.
- 6) Touch the DATE section the sixth time. The + and – buttons will flash. Touch the + or – button to set the alarm hour. Hold the + or – button for 3 s to change the number in larger steps.
- 7) Touch the DATE section the seventh time. The + and – buttons will flash. Touch the + or – button to set the alarm minute. Hold the + or – button for 3 s to change the number in larger steps. Touch ON/OFF to enable or disable the time alarm function.

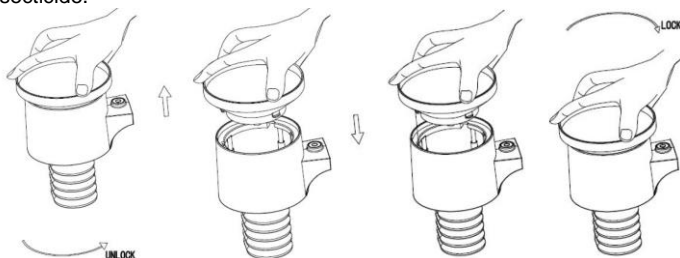
7.12 Memory

Touch the MEMORY section to activate history data toggle display. The + and – buttons will flash. Press – to toggle forward to see earlier weather history data together with their time stamp. Press + to see later history weather data. When history data are displayed, the corresponding time will be displayed in the time section (History data saving interval can only be changed using the PC software that can be downloaded for this product. The default history data saving time interval is 30 minutes).

Touch the MEMORY section again to trigger the memory clear procedure: the word “CLEAR” as well as the full memory icon will flash. Touch and hold the memory full icon for 3 seconds to clear the memory.

8 Maintenance

1. Clean the rain gauge once every 3 months. Rotate the funnel counter-clockwise, lift it to expose the inside of the rain gauge and clean it with a damp cloth. Remove any dirt, debris and insects. If bug infestation is an issue, spray the rain gauge lightly with insecticide.



2. Clean the solar panel every 3 months with a damp cloth.
3. Replace the batteries every 1 to 2 years. If left in too long, the batteries may leak due to environmental challenges. In harsh environments, inspect the batteries every 3 months (when cleaning the solar panel).
4. When replacing the batteries, apply a corrosion preventive compound on the battery terminals, available at most hardware stores.
5. In snowy environments, spray the top of the weather station with anti-icing / silicon spray to prevent snow build up.

9 PC connection

As an important feature in addition to displaying data on the touch screen, the weather station allows the read-out of all measured and displayed time and weather data in the form of complete history data sets on a PC.

9.1 Data storage

For a comprehensive weather history, the display allows the internal storage of up to 4080 complete sets of weather data with time and date. The display will lose all weather data when the power supply is interrupted. In case the memory capacity of the weather station is exhausted, the oldest data sets stored will be overwritten by the new ones entered.

9.2 Data recall

Certain weather data or set values can only be read out, processed and displayed by means of a PC. Also, setting the storage interval from 5 minutes to 240 minutes for the storage of data sets can only be performed by means of a PC.

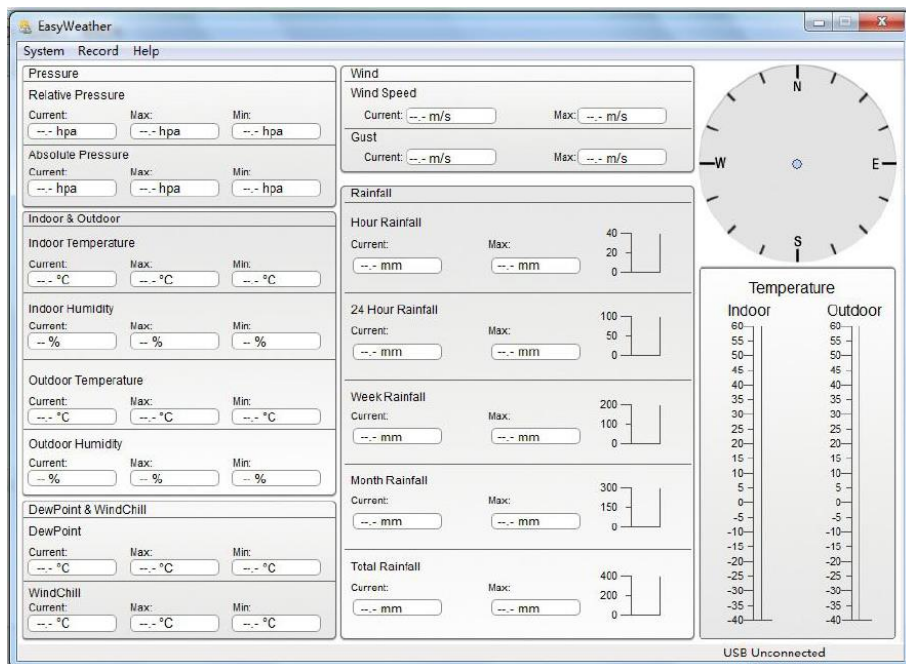
9.3 Connections and software

The wiring between the weather station and the PC is done by means of an included USB cable. This software allows displaying all present weather data with graphic symbols. It also allows the display, storage, and printing of history data sets the volume of which is not limited to a maximum of 4080 data sets, as in the weather station itself, but is only limited by the capacity of the PC's main memory.

9.4 PC software installation

The installation of the software is described in further detail under 10.2.

If you run the program for the first time, the current weather data will be displayed and in the sub line of the window, the program will show the status of data upload to the software. Please note, however, when a large amount of data is being uploaded, it will take a few minutes before the system can respond to your settings.



When the memory is full, it will take about two minutes to upload all history data to the PC and another two minutes to process all history data for graphic display.



10 Software

10.1 System Requirements

To install the "EasyWeather" software on your PC, the minimum requirements are as follows:

Operating system: Windows 7/8/10, MAC OS

Internet Explorer 6.0 or above

Processor: 500 MHz or above

Memory: at least 128 MB, 256 MB recommended

CD-ROM drive

Display and PC must be connected by USB cable

10.2 Installation of the "EasyWeather" software

The display and the outdoor sensors must be connected and checked for correct function. After successfully checking proper function of the weather station, install the "EasyWeather" software as follows:

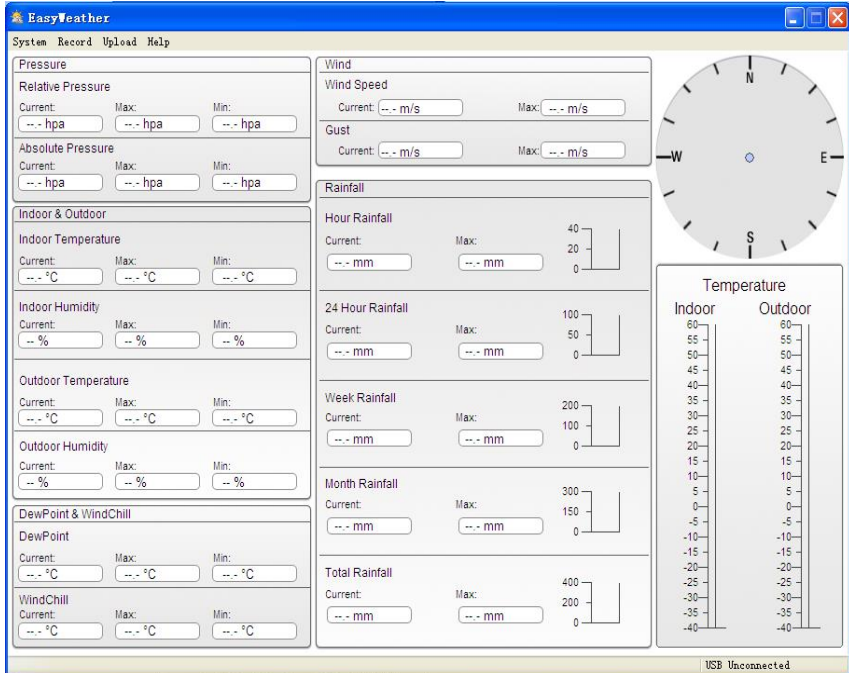
1. Switch on your PC and download the software here:
https://www.pce-instruments.com/english/download-win_4.htm.
2. Unzip the downloaded zip file.
3. Double-click "Easyweather Setup.exe".
4. Select the language and click "OK".
5. Click "Next" and select the storage location.
6. Click "Next" to install the programme.
7. Click "OK" to finish the installation process.
8. The programme is to be found under "Start - EasyWeather".

Note:

The user should be aware that to fully access the graphic functions, they need to have administrative rights for the computer.

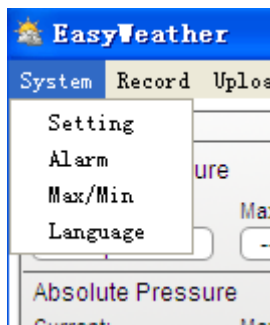
10.3 Basic settings of the PC software

After the start-up of the “EasyWeather.exe” programme, the following window will appear on the PC screen:



The settings from the display are transferred to the PC software. Once the settings of the display have been completed, no settings need to be made in the PC software. However, it is easy to change the settings in the PC software and transfer these to the display (The settings will be updated in the display in the next full minute). When the display is connected to the PC, it shows “USB Connected” at the bottom of the screen. If no display is connected, it shows “USB Unconnected”.

10.4 System menu



10.4.1 Basic settings

Setting

Time Zone: 0

Interval: Minute

Unit

Indoor Temperature: °C

Outdoor Temperature: °C

Pressure: hpa

Wind: m/s

Rainfall: mm

Pressure

Relative Pressure: hpa

Absolute Pressure: hpa

Display

Format: Full Date

Date: dd-mm-yy

Time: 24 Hour

Axes: 12 Hour

Outdoor Temperature: Temperature

Pressure: Absolute Pressure

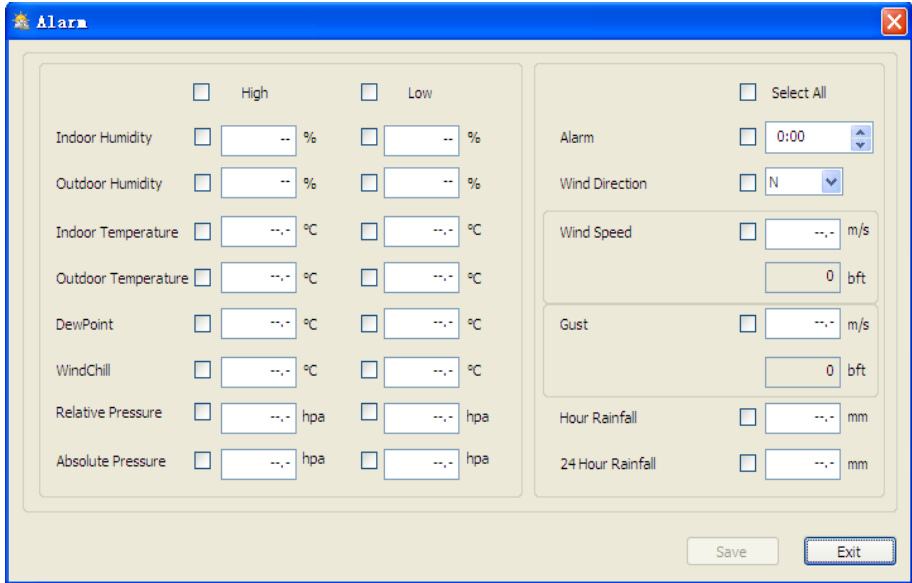
Wind: Wind Speed

Rainfall: Hour Rainfall

Save Exit

This section is used to set the PC software display as well as the display units. Press the “Save” button to confirm the settings.

10.4.2 Alarm settings



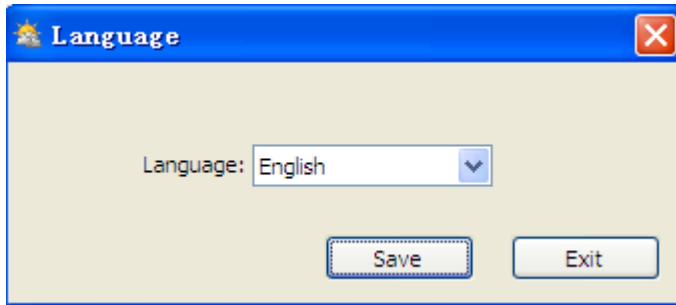
| High | | Low | | Select All | |
|---------------------|--------------------------|-----------------------------------|----------------------|--------------------------------|--------------------------|
| Indoor Humidity | <input type="checkbox"/> | <input type="checkbox"/> | <input type="text"/> | % | <input type="checkbox"/> |
| Outdoor Humidity | <input type="checkbox"/> | <input type="checkbox"/> | <input type="text"/> | % | <input type="checkbox"/> |
| Indoor Temperature | <input type="checkbox"/> | <input type="checkbox"/> | <input type="text"/> | °C | <input type="checkbox"/> |
| Outdoor Temperature | <input type="checkbox"/> | <input type="checkbox"/> | <input type="text"/> | °C | <input type="checkbox"/> |
| DewPoint | <input type="checkbox"/> | <input type="checkbox"/> | <input type="text"/> | °C | <input type="checkbox"/> |
| WindChill | <input type="checkbox"/> | <input type="checkbox"/> | <input type="text"/> | °C | <input type="checkbox"/> |
| Relative Pressure | <input type="checkbox"/> | <input type="checkbox"/> | <input type="text"/> | hpa | <input type="checkbox"/> |
| Absolute Pressure | <input type="checkbox"/> | <input type="checkbox"/> | <input type="text"/> | hpa | <input type="checkbox"/> |
| Alarm | <input type="checkbox"/> | <input type="text" value="0:00"/> | | | <input type="checkbox"/> |
| Wind Direction | <input type="checkbox"/> | N | | | <input type="checkbox"/> |
| Wind Speed | <input type="checkbox"/> | <input type="text" value="--"/> | m/s | <input type="text" value="0"/> | bft |
| Gust | <input type="checkbox"/> | <input type="text" value="--"/> | m/s | <input type="text" value="0"/> | bft |
| Hour Rainfall | <input type="checkbox"/> | <input type="text" value="--"/> | mm | | <input type="checkbox"/> |
| 24 Hour Rainfall | <input type="checkbox"/> | <input type="text" value="--"/> | mm | | <input type="checkbox"/> |

This section is used to set the desired time, a higher or lower warning value and to enable or disable an alarm function. Press the "Save" button to confirm the settings. If you do not need to change any of the settings, press "Cancel" and exit.



This section is used to display the recorded Min and Max value values with a time stamp. A Min/Max reset can only be carried out on the display.

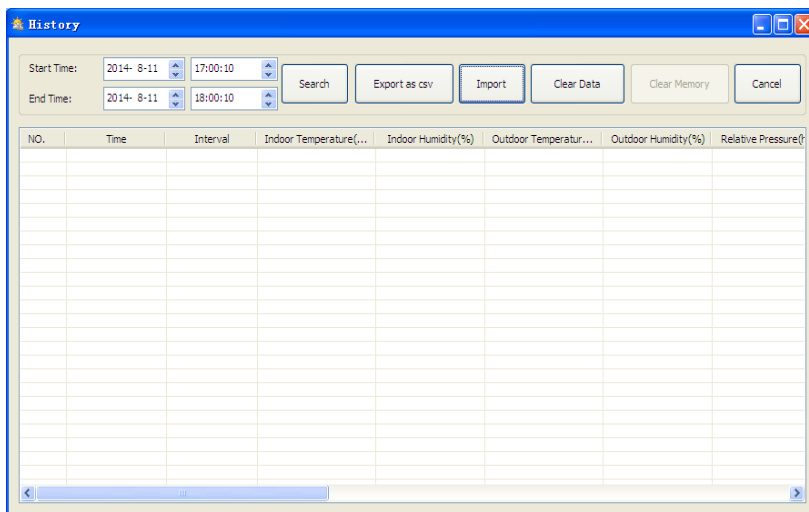
10.4.4 Language setting



10.5 Save



10.5.1 Tabular view



This section is used to display saved data in a spread sheet. To view data from a desired time period, enter the time period and click on “Search” to reload the history data. The “Export as csv” button exports the selected saved data into an Excel file for use in other applications.

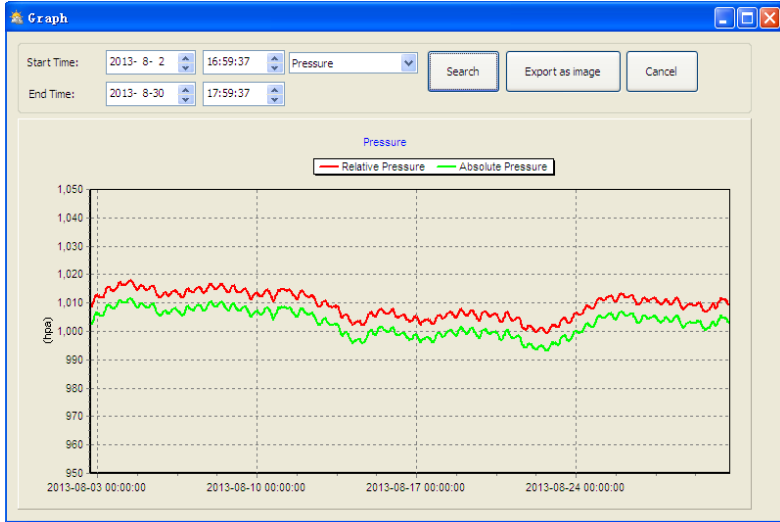
The software version 6.2 uses .dat file format, software versions above 6.2 use .mdb format. Click on the “Import” button to import the data from the old version to the new version.

When the memory of the display is full, click on the “Clear Memory” button to refresh the memory space of the display (remember to upload all data before pressing this button).

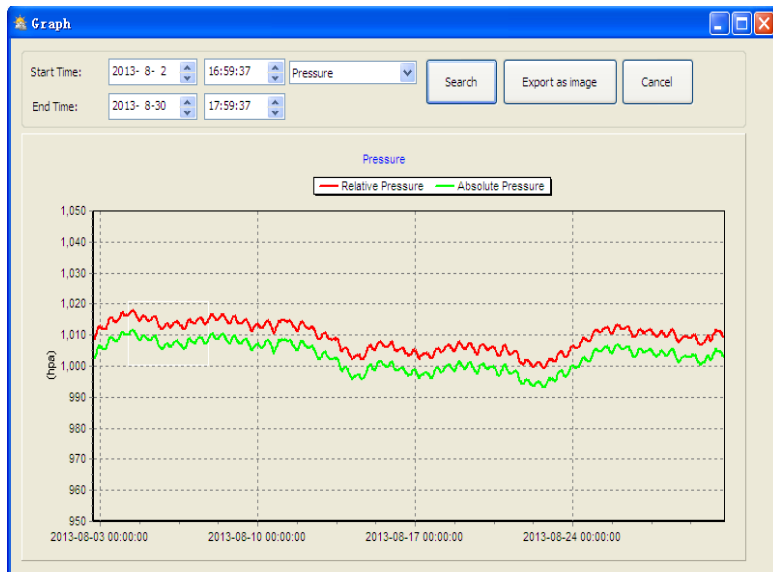
If you would like to start a new weather history record, click on the “Clear Data” button and all the recorded data will be deleted.

If you would like to keep a backup history file before deleting all weather data, you can make a copy of the “EasyWeather.mdb” file into another folder or just rename the “EasyWeather.mdb” file, such as “Jan-07.dat”, for future reference..

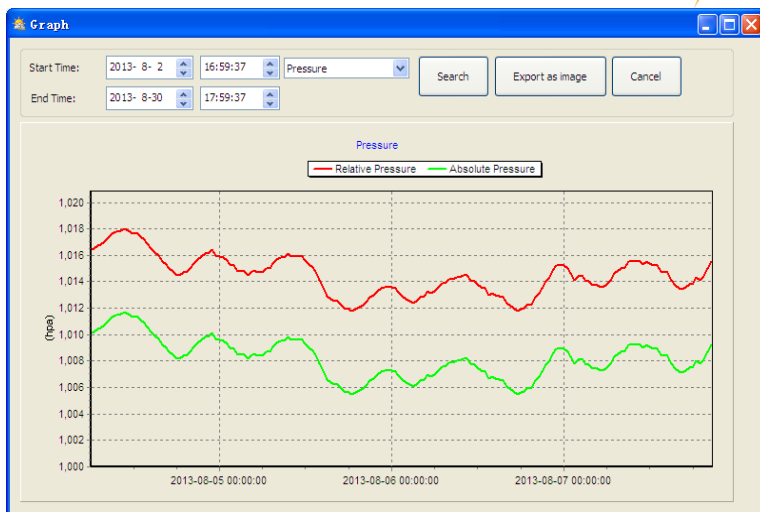
10.5.2 Graphical view



In this section, the saved data can be viewed in graph format. If you want to view the data in more detail, use the mouse to select the area and the display will automatically be updated in more detailed scale:



The y axis can be changed by scrolling the mouse wheel.

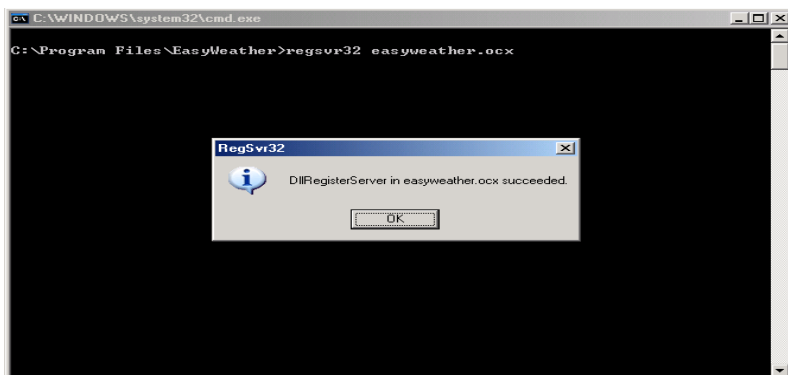


The "Export as image" button exports the selected graph into a jpeg image.

10.6 Troubleshooting: Graphs are not displayed

This is the most encountered problem with this software. To make sure the graph is displayed, proceed as follows:

1. Find the folder in which the "EasyWeather.exe" file is located.
2. Create a file called "reg_graph.bat" with word pad or notepad editor programme (Make sure that Windows saves the file with the correct ending and not as "reg_graph.bat.txt" – the file name in front of the point is not relevant).
3. Type "regsvr32 easyweather.ocx" (without quotation marks) into the text editor and save the reg_graph.bat file.
4. Double-click on the created reg_graph.bat file – The following message confirms that the command has been successfully executed:





10.7 Data upload

Note:

This function is available from Version 8.3. The current version is available for download on https://www.pce-instruments.com/english/download-win_4.htm.

To upload weather data to the internet, from EasyWeather, select "Upload" from the menu bar.

10.7.1 Upload to WeatherUnderground.com

The saved measurement data can be uploaded to www.wunderground.com. Register on www.wunderground.com free of charge. Select "Join" if you do not have an account yet.

Then visit <http://www.wunderground.com/weatherstation/setup.asp> and enter your station's ID (in capital letters) and password (case-sensitive). Tick the "Auto Upload" checkbox.

Alternatively, the data can be uploaded to your own website. In that case, you have to choose "Custom" and set the server, server type and port.

The screenshot shows a dialog box titled "Upload" with a close button in the top right corner. The dialog contains the following fields and options:

- Website:** A text input field that is currently empty.
- Server:** A text input field containing "www.wunderground.com" and "(Custom)".
- Type:** A dropdown menu set to "php".
- Port:** An empty text input field.
- Upload Type:** A dropdown menu set to "Customize".
- ID:** An empty text input field.
- PassWord:** An empty text input field.
- Auto Upload:** An unchecked checkbox.
- Buttons:** "Save" and "Cancel" buttons at the bottom right.

Upload

Website:

Server:

Type:

Port:

Upload Type:

ID:

PassWord:

Auto Upload

Save Cancel

10.7.2 Upload to WeatherCloud

weathercloud

Server:

ID:

Key:

Auto Upload

Save Cancel

10.7.3 Upload your weather data to WeatherObservationWebsite (WOW)

Select “Upload” – “WeatherObservationWebsite” from the menu bar.



To upload data to wow.metoffice.gov.uk, you must first register on the wow.metoffice.gov.uk website. Registration is free.

Once you are logged in, you will need to create a new WOW site. “Sites” are the means by which WOW organizes weather data you contribute. Basically, WOW builds a personal web site for your weather station. The following two items you need to upload data are associated with the web site.

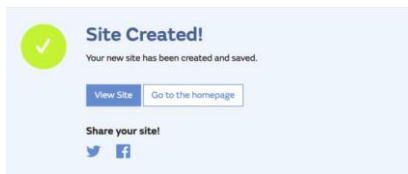
Site ID: This is an arbitrary number that is used to distinguish your site from another. This number appears (in brackets) next to or below the name of your site on the site information page, for example: 6a571450-df53-e611-9401-0003ff5987fd.

Authentication key: This is a 6-digit number that is used to ensure data is coming from you and not another user.

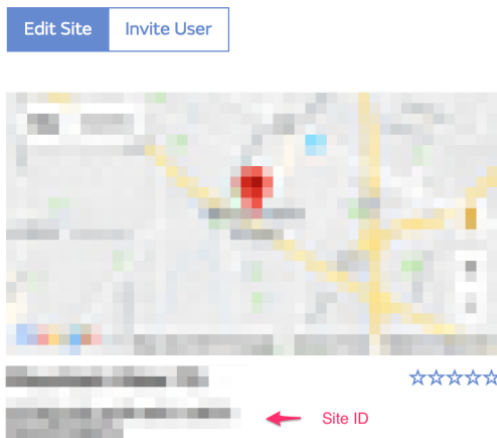
Start setting up a new site by clicking on “Enter a Site”:



You will see a form where you detail your station’s location and some other settings related to how you wish the site to operate. After you complete the setup, you should see:



Make sure you are (still) logged in to the WOW site. Log in when necessary. Now click on “My Sites” in the navigation bar at the top. If you have only 1 site, you will now be shown its page. If you have multiple sites, you will have to select one first. On this page, you will find the site ID just below the map:



You will also need to create a unique 6-digit PIN code that you should keep secret. It is the “Authentication Key.” Set up this number by clicking on “Edit Site” and entering a 6-digit number of your choice:

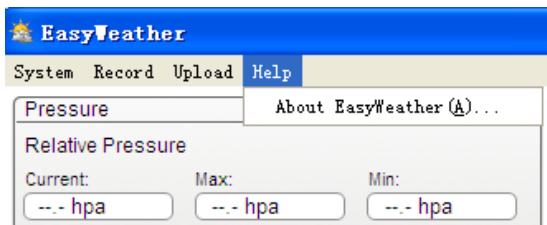
Authentication Key

You will need both “Site ID” and “Authentication Key” to set up the upload configuration for WOW in the weather server.

On the WOW website, navigate to the “Device List” page and tap on the device you want to configure WOW for. You will then be shown the “wunderground.com” configuration. Please ignore and tap “Next” to see the “Weathercloud” configuration. Please press “Next” one more time and you will get to the screen where you can configure WOW.

On this screen, you will enter the WOW “Site ID” as “Station ID” and the WOW “Authentication Key” you created as “Station Key”. Press “Save” to finalize the configuration.

10.8 Help option



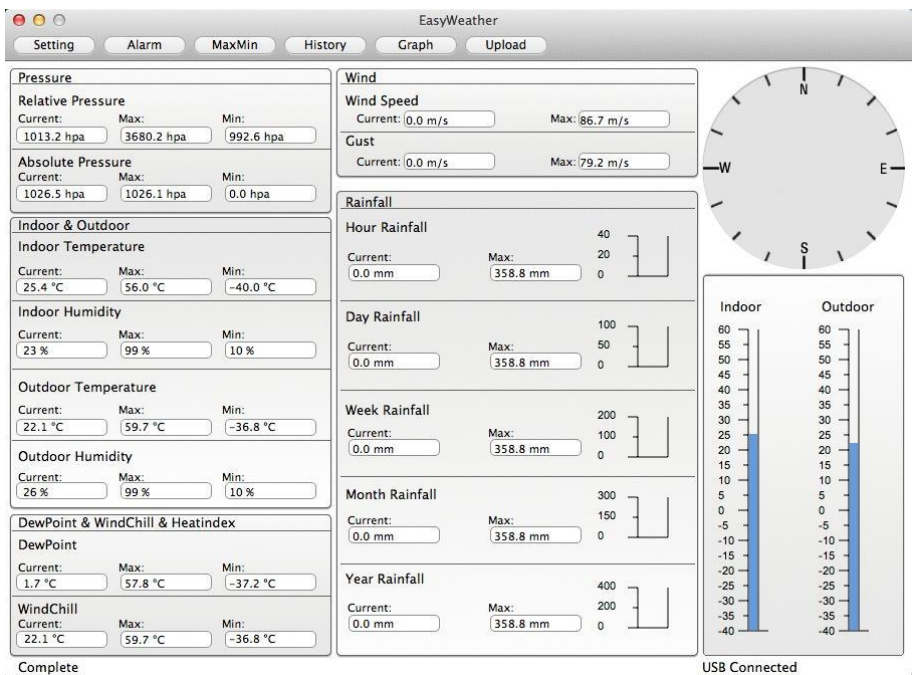
Click on the “About EasyWeather” button to enter the “About” menu.

11 Software on MAC OS

11.1 Installation of the “EasyWeather” software

The display and the outdoor sensors must be connected and checked for correct function. After successfully checking proper function of the weather station, install the “EasyWeather” software as follows:

1. Switch on your MAC and download the software here:
https://www.pce-instruments.com/english/download-win_4.htm.
2. Unzip the downloaded zip file.
3. Double-click the “EasyWeather” icon in the MAC folder. The following screen will open:



The functions of MAC OS are the same as the Windows version. Once the device is connected to a MAC by the USB cable, settings and alarms of all weather parameters can be entered here. The Max/Min record and all history records can be viewed. History records can be exported as Excel or PDF files as well.

11.2 Basic settings

Please refer to 10.4.1

○ ○ ○
Setting

Interval: Minute

Time Zone:

Unit

Temperature:

Pressure:

Wind:

Rainfall:

Calibration

Relative Pressure: hpa

Absolute Pressure: hpa

Display

Date:

Format:

Time:

Axis:

Pressure:

Wind:

Rainfall:

Outdoor Temperature:

11.3 Alarm settings

Please refer to 10.4.2

○ ○ ○
Alarm

| | | |
|----------------------|--|---|
| | <input type="checkbox"/> High | <input type="checkbox"/> Low |
| Indoor Humidity: | <input type="checkbox"/> <input type="text" value="90"/> % | <input type="checkbox"/> <input type="text" value="20"/> % |
| Outdoor Humidity: | <input type="checkbox"/> <input type="text" value="80"/> % | <input type="checkbox"/> <input type="text" value="20"/> % |
| Indoor Temperature: | <input type="checkbox"/> <input type="text" value="30.0"/> °C | <input type="checkbox"/> <input type="text" value="10.0"/> °C |
| Outdoor Temperature: | <input type="checkbox"/> <input type="text" value="30.0"/> °C | <input type="checkbox"/> <input type="text" value="10.0"/> °C |
| DewPoint: | <input type="checkbox"/> <input type="text" value="35.0"/> °C | <input type="checkbox"/> <input type="text" value="-20.0"/> °C |
| WindChill: | <input type="checkbox"/> <input type="text" value="35.0"/> °C | <input type="checkbox"/> <input type="text" value="-20.0"/> °C |
| Relative Pressure: | <input type="checkbox"/> <input type="text" value="1079.9"/> hpa | <input type="checkbox"/> <input type="text" value="980.8"/> hpa |
| Absolute Pressure: | <input type="checkbox"/> <input type="text" value="1079.9"/> hpa | <input type="checkbox"/> <input type="text" value="980.8"/> hpa |

Select

Alarm:

Wind Direction:

Wind Speed: m/s

Gust: m/s

Hour Rainfall: mm

Day Rainfall: mm



11.4 Max/Min display

Please refer to 10.4.3

Max/Min

| | |
|---|--|
| Indoor Humidity Max: 99% 2010-01-14 11:53 Min: 10% 2010-01-14 12:43 | Wind Speed Max: 86.7 m/s 2010-03-09 14:53 |
| Outdoor Humidity Max: 99% 2010-01-03 19:57 Min: 10% 2010-01-01 12:00 | Gust Max: 79.2 m/s 2010-03-09 14:53 |
| Indoor Temperature Max: 56.0 °C 2010-01-14 12:20 Min: -40.0 °C 2010-01-04 21:55 | Hour Rainfall Max: 358.8 mm 2010-01-01 12:20 |
| Outdoor Temperature Max: 59.7 °C 2010-01-01 12:02 Min: -36.8 °C 2010-03-15 20:21 | Day Rainfall Max: 358.8 mm 2010-01-01 12:20 |
| DewPoint Max: 57.8 °C 2010-01-03 08:12 Min: -37.2 °C 2010-01-02 02:00 | Week Rainfall Max: 358.8 mm 2010-01-01 12:20 |
| Absolute Pressure Max: 1026.2 hpa 2010-01-01 12:00 Min: 0.0 hpa 2010-01-01 12:02 | Month Rainfall Max: 358.8 mm 2010-01-01 12:20 |
| Relative Pressure Max: 3680.2 hpa 2015-10-25 20:34 Min: 992.6 hpa 2010-01-10 04:45 | Total Rainfall Max: 358.8 mm 2010-01-01 12:20 |
| WindChill Max: 59.7 °C 2010-01-01 12:02 Min: -36.8 °C 2010-03-15 20:21 | |

11.5 Save

Please refer to 10.5.1

History

Strat Time: 17/12/2013 4:53 PM End Time: 17/12/2015 5:53 PM

| NO. | Time | Interval | InTemp | InHumi | OutTemp | OutHumi | RelPressure | AbsPres... | DewPoint | WindChill | Wind | Gust | W |
|------|------------------|----------|--------|--------|---------|---------|-------------|------------|----------|-----------|------|------|----|
| 4056 | 2015-11-27 09:20 | 1 | 25.4 | 23 | 22.4 | 28 | 1022.1 | 1025.8 | 3.0 | 22.4 | 0.0 | 0.0 | -- |
| 4057 | 2015-11-27 09:21 | 1 | 25.4 | 23 | 22.4 | 28 | 1022.1 | 1025.8 | 3.0 | 22.4 | 0.0 | 0.0 | -- |
| 4058 | 2015-11-27 09:22 | 1 | 25.4 | 23 | 22.4 | 28 | 1022.1 | 1025.8 | 3.0 | 22.4 | 0.0 | 0.0 | -- |
| 4059 | 2015-11-27 09:23 | 1 | 25.4 | 23 | 22.4 | 28 | 1022.1 | 1025.8 | 3.0 | 22.4 | 0.0 | 0.0 | -- |
| 4060 | 2015-11-27 09:24 | 1 | 25.4 | 23 | 22.4 | 28 | 1022.1 | 1025.8 | 3.0 | 22.4 | 0.0 | 0.0 | -- |
| 4061 | 2015-11-27 09:25 | 1 | 25.4 | 23 | 22.4 | 28 | 1022.2 | 1025.9 | 3.0 | 22.4 | 0.0 | 0.0 | -- |
| 4062 | 2015-11-27 09:26 | 1 | 25.4 | 23 | 22.4 | 29 | 1022.2 | 1025.9 | 3.5 | 22.4 | 0.0 | 0.0 | -- |
| 4063 | 2015-11-27 09:27 | 1 | 25.4 | 23 | 22.3 | 29 | 1022.1 | 1025.8 | 3.4 | 22.3 | 0.0 | 0.0 | -- |
| 4064 | 2015-11-27 09:28 | 1 | 25.4 | 23 | 22.3 | 29 | 1022.0 | 1025.7 | 3.4 | 22.3 | 0.0 | 0.0 | -- |
| 4065 | 2015-11-27 09:29 | 1 | 25.4 | 23 | 22.3 | 29 | 1022.1 | 1025.8 | 3.4 | 22.3 | 0.0 | 0.0 | -- |
| 4066 | 2015-11-27 09:30 | 1 | 25.4 | 23 | 22.3 | 29 | 1022.0 | 1025.7 | 3.4 | 22.3 | 0.0 | 0.0 | -- |
| 4067 | 2015-11-27 09:31 | 1 | 25.4 | 23 | 22.3 | 29 | 1022.2 | 1025.9 | 3.4 | 22.3 | 0.0 | 0.0 | -- |
| 4068 | 2015-11-27 09:32 | 1 | 25.4 | 24 | 22.3 | 29 | 1022.1 | 1025.8 | 3.4 | 22.3 | 0.0 | 0.0 | -- |
| 4069 | 2015-11-27 09:33 | 1 | 25.6 | 24 | 22.4 | 29 | 1022.2 | 1025.9 | 3.5 | 22.4 | 0.0 | 0.0 | -- |
| 4070 | 2015-11-27 09:34 | 1 | 25.6 | 24 | 22.4 | 29 | 1022.1 | 1025.8 | 3.5 | 22.4 | 0.0 | 0.0 | -- |
| 4071 | 2015-11-27 09:35 | 1 | 25.7 | 24 | 22.4 | 29 | 1022.2 | 1025.9 | 3.5 | 22.4 | 0.0 | 0.0 | -- |
| 4072 | 2015-11-27 09:36 | 1 | 25.6 | 24 | 22.4 | 29 | 1022.1 | 1025.8 | 3.5 | 22.4 | 0.0 | 0.0 | -- |
| 4073 | 2015-11-27 09:37 | 1 | 25.7 | 24 | 22.4 | 29 | 1022.1 | 1025.8 | 3.5 | 22.4 | 0.0 | 0.0 | -- |
| 4074 | 2015-11-27 09:38 | 1 | 25.7 | 24 | 22.4 | 30 | 1022.1 | 1025.8 | 4.0 | 22.4 | 0.0 | 0.0 | -- |
| 4075 | 2015-11-27 09:39 | 1 | 25.6 | 24 | 22.4 | 30 | 1022.0 | 1025.7 | 4.0 | 22.4 | 0.0 | 0.0 | -- |
| 4076 | 2015-11-27 09:40 | 1 | 25.7 | 24 | 22.4 | 30 | 1022.0 | 1025.7 | 4.0 | 22.4 | 0.0 | 0.0 | -- |
| 4077 | 2015-11-27 09:41 | 1 | 25.8 | 25 | 22.4 | 30 | 1022.0 | 1025.7 | 4.0 | 22.4 | 0.0 | 0.0 | -- |
| 4078 | 2015-11-27 09:42 | 1 | 25.8 | 25 | 22.4 | 30 | 1022.0 | 1025.7 | 4.0 | 22.4 | 0.0 | 0.0 | -- |
| 4079 | 2015-12-17 17:30 | 5 | 26.6 | 47 | 26.2 | 49 | 1004.0 | 1017.3 | 14.7 | 26.2 | 0.0 | 0.0 | -- |
| 4080 | 2015-12-17 17:31 | 1 | 25.4 | 23 | 22.1 | 26 | 1012.9 | 1026.2 | 1.7 | 22.1 | 0.0 | 0.0 | -- |
| 4081 | 2015-12-17 17:32 | 1 | 25.4 | 23 | 22.1 | 26 | 1012.8 | 1026.1 | 1.7 | 22.1 | 0.0 | 0.0 | -- |
| 4082 | 2015-12-17 17:33 | 1 | 25.4 | 24 | 22.1 | 26 | 1012.8 | 1026.1 | 1.7 | 22.1 | 0.0 | 0.0 | -- |
| 4083 | 2015-12-17 17:53 | 5 | 26.6 | 47 | 26.2 | 49 | 1004.0 | 1017.3 | 14.7 | 26.2 | 0.0 | 0.0 | -- |

11.6 Graphical view

Please refer to 10.5.2



11.7 Data upload

Please refer to 10.7

The figure shows a dialog box titled "Upload" with a light gray background. It contains several input fields and a checkbox. The fields are: "Website:" with a dropdown menu showing "www.wunderground.com"; "Server:" with a text box containing "rtupdate.wunderground.com"; "Type:" with a dropdown menu showing "php"; "Port:" with a text box containing "80"; "Upload Type:" with a dropdown menu showing "Customize"; "ID:" with an empty text box; "Password/Key:" with an empty text box; and "StationNum:" with an empty text box. At the bottom left, there is a checked checkbox labeled "Auto Upload". At the bottom right, there are "Save" and "Cancel" buttons.



Click on the “About EasyWeather” button to enter the “About” menu to check version information.

11.9 Special notes about time synchronization between PC/MAC and display

The PC software obtains its own time scale through the time interval marker from the display history data and the PC software automatically synchronizes the weather data with a time stamp calculated. Thus, the history data file can have a different time when the PC/MAC time and display time are not same. In order to make sure the time scale is correct and to avoid data from being overwritten or missed, set the same time for the PC/MAC as for the display. If the saved history of weather data of the display is cleared manually, the history of weather data since the last upload is lost permanently.

Before the memory is used up (memory icon on LCD display showing 100 % full), remember to upload your history of weather data to the PC/MAC periodically.

If the rainfall has been reset on the display, there will be a rainfall value discrepancy between the PC/MAC and the display.

12 Contact

If you have any questions, suggestions or technical problems, please do not hesitate to contact us. You will find the relevant contact information at the end of this user manual.

13 Disposal

For the disposal of batteries in the EU, the 2006/66/EC directive of the European Parliament applies. Due to the contained pollutants, batteries must not be disposed of as household waste. They must be given to collection points designed for that purpose.

In order to comply with the EU directive 2012/19/EU we take our devices back. We either reuse them or give them to a recycling company which disposes of the devices in line with law.

For countries outside the EU, batteries and devices should be disposed of in accordance with your local waste regulations.

If you have any questions, please contact PCE Instruments.





PCE Instruments contact information

Germany

PCE Deutschland GmbH
Im Langel 4
D-59872 Meschede
Deutschland
Tel.: +49 (0) 2903 976 99 0
Fax: +49 (0) 2903 976 99 29
info@pce-instruments.com
www.pce-instruments.com/deutsch

Germany

Produktions- und
Entwicklungsgesellschaft mbH
Im Langel 26
D-59872 Meschede
Deutschland
Tel.: +49 (0) 2903 976 99 471
Fax: +49 (0) 2903 976 99 9971
info@pce-instruments.com
www.pce-instruments.com/deutsch

The Netherlands

PCE Broekhuis B.V.
Institutenweg 15
7521 PH Enschede
Nederland
Telefoon: +31 (0)53 737 01 92
Fax: +31 53 430 36 46
info@pcebenelux.nl
www.pce-instruments.com/dutch

United States of America

PCE Americas Inc.
711 Commerce Way suite 8
Jupiter / Palm Beach
33458 FL
USA
Tel: +1 (561) 320-9162
Fax: +1 (561) 320-9176
info@pce-americas.com
www.pce-instruments.com/us

France

PCE Instruments France EURL
23, rue de Strasbourg
67250 Soultz-Sous-Forêts
France
Téléphone: +33 (0) 972 3537 17
Numéro de fax: +33 (0) 972 3537 18
info@pce-france.fr
www.pce-instruments.com/french

United Kingdom

PCE Instruments UK Ltd
Unit 11 Southpoint Business Park
Ensign Way, Southampton
Hampshire
United Kingdom, SO31 4RF
Tel: +44 (0) 2380 98703 0
Fax: +44 (0) 2380 98703 9
info@pce-instruments.co.uk
www.pce-instruments.com/english

Chile

PCE Instruments Chile S.A.
RUT: 76.154.057-2
Calle Santos Dumont N° 738, Local 4
Comuna de Recoleta, Santiago
Tel. : +56 2 24053238
Fax: +56 2 2873 3777
info@pce-instruments.cl
www.pce-instruments.com/chile

Turkey

PCE Teknik Cihazları Ltd.Şti.
Halkalı Merkez Mah.
Pehlivan Sok. No.6/C
34303 Küçükçekmece - İstanbul
Türkiye
Tel: 0212 471 11 47
Faks: 0212 705 53 93
info@pce- cihazlari.com.tr
www.pce-instruments.com/turkish

Spain

PCE Ibérica S.L.
Calle Mayor, 53
02500 Tobarra (Albacete)
España
Tel. : +34 967 543 548
Fax: +34 967 543 542
info@pce-iberica.es
www.pce-instruments.com/espanol

Italy

PCE Italia s.r.l.
Via Pesciatina 878 / B-Interno 6
55010 Loc. Gragnano
Capannori (Lucca)
Italia
Telefono: +39 0583 975 114
Fax: +39 0583 974 824
info@pce-italia.it
www.pce-instruments.com/italiano

Hong Kong

PCE Instruments HK Ltd.
Unit J, 21/F., COS Centre
56 Tsun Yip Street
Kwun Tong
Kowloon, Hong Kong
Tel: +852-301-84912
jyi@pce-instruments.com
www.pce-instruments.cn

China

PCE (Beijing) Technology Co., Limited
1519 Room, 6 Building
Zhong Ang Times Plaza
No. 9 Mentougou Road, Tou Gou District
102300 Beijing
China
Tel: +86 (10) 8893 9660
info@pce-instruments.cn
www.pce-instruments.cn