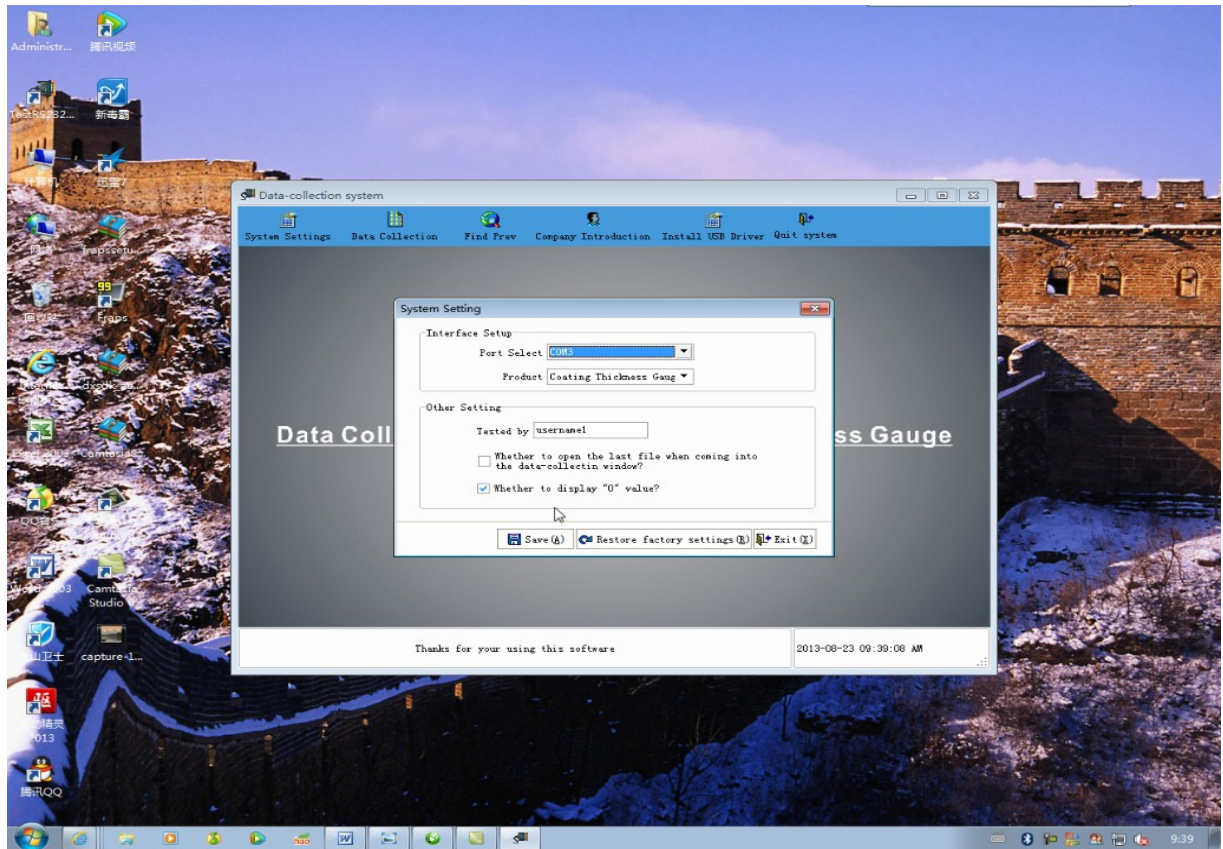
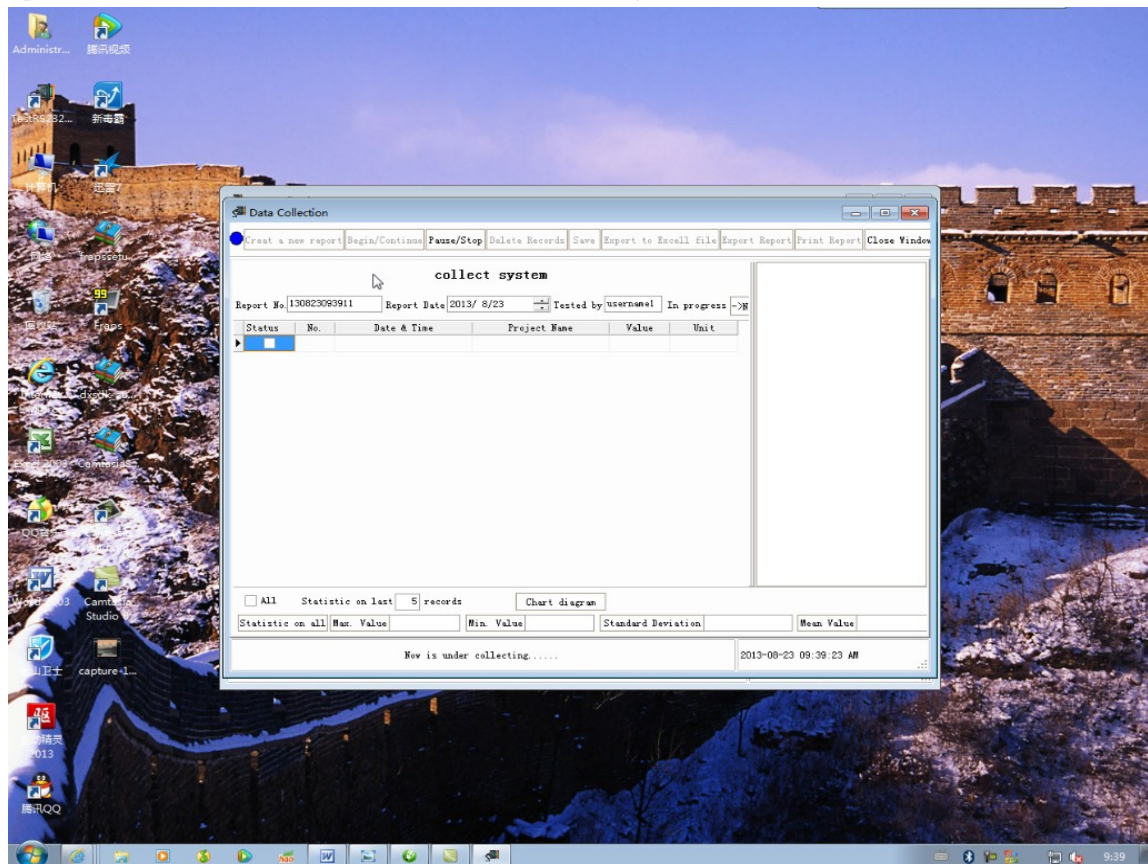


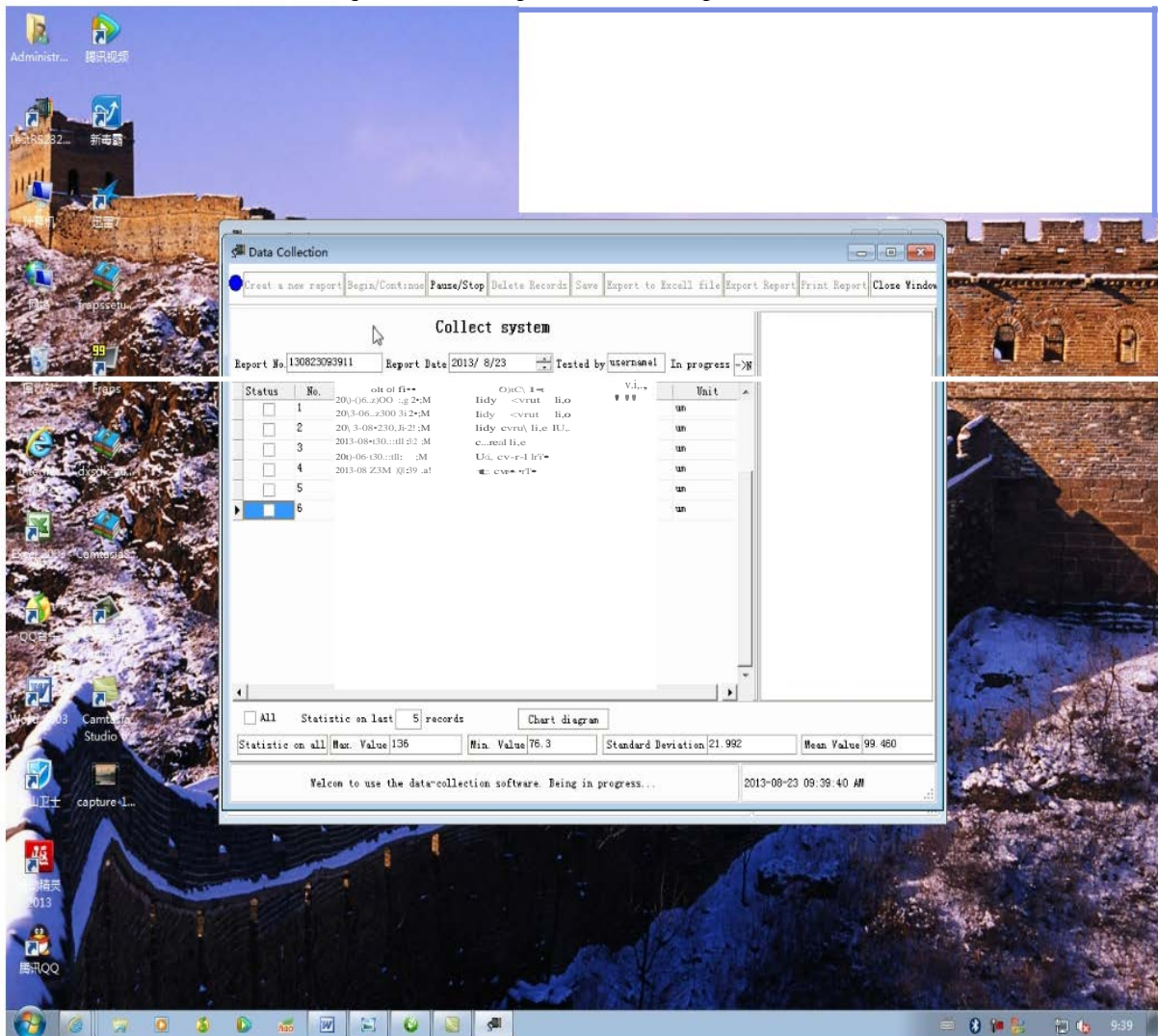
Click the RS232 icon the installation wizard saved to your desktop to open the software. Then click system settings, and select the com port and instrument type. Save and exit.



After using the instrument to obtain measurements, connect the instrument to the computer using the custom cable provided. Open the software and click data collection to enter the acquisition interface. Then click new to start downloading the measurement data.



After the measurement data acquisition is complete, save the export to a folder.



Save the export to a folder.

