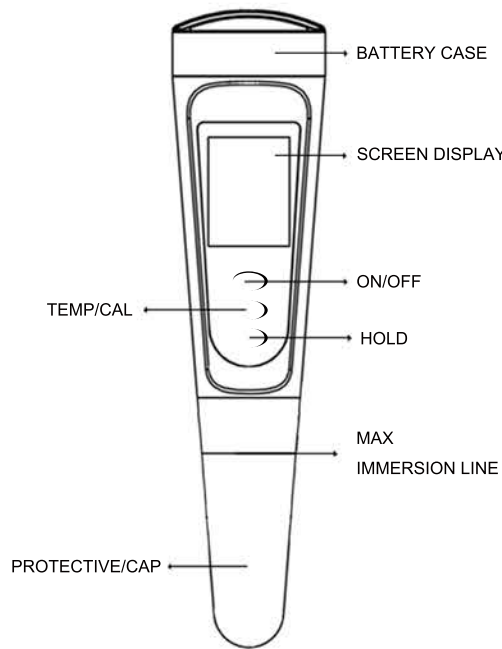


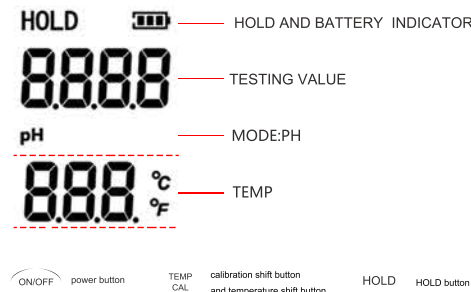
USER MANUAL PH METER PCE-PH 12



1



SCREEN DISPLAY



2

SPECIFICATION

Parameters	PCE-PH 12
Range	0.00~14.00 pH
Resolution	0.01 pH
Accuracy	±0.05 pH
Temp Range	0-60°C/32-140°F
ATC:	0-60°C/32-140°F
Calibration	three points automatic calibration
Battery	4*1.5V(LR44)
Dimension	185*40*20mm
Weight	88g

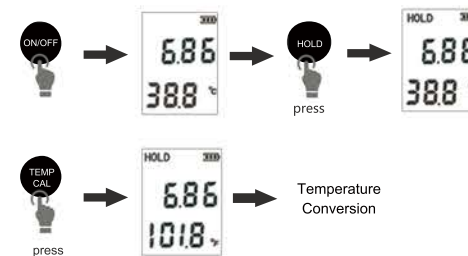
USING STEPS

- 1.Remove the protective cap.
- 2.Turn the meter on by pressing the"ON/OFF" key.
3. Immerse the meter electrode in the test solution (immersion depth can not be over the immersion line)
- 4.Stir gently and wait until the reading stabilized.
- 5.if you need test temp , please long press "TEMP/CAL "button to get temp reading.
- 6.After finished ,clean the electrode with distilled water , turn the meter off by pressing the "ON/OFF" key.
7. Replace the protective cap after use.

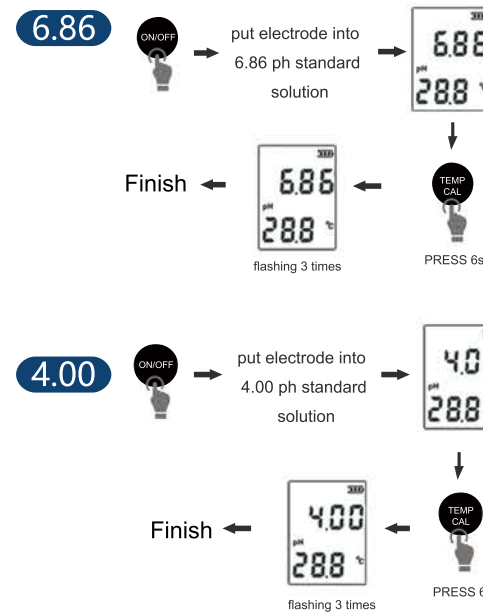
3

OPERATION

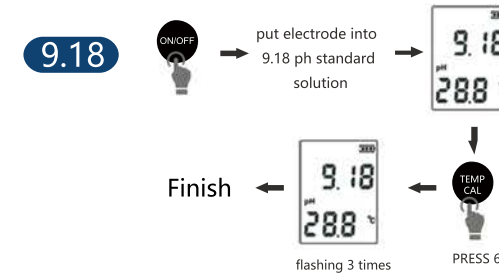
HOLD/TEMP.SHIFT



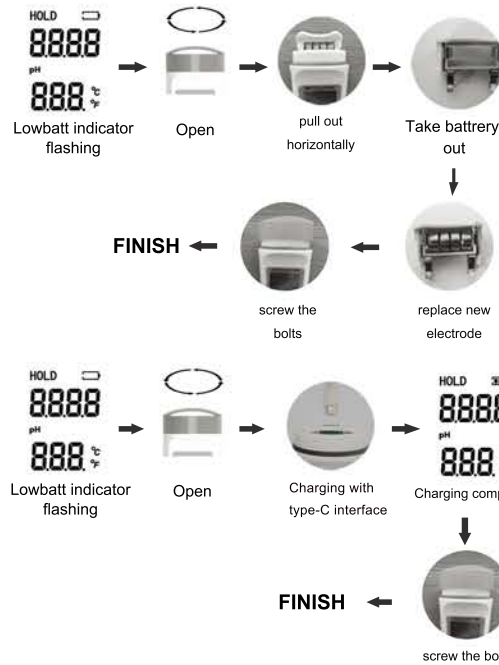
PH CALIBRATION



4



LOWBATT



5

PACKING LIST

- 1*PH meter
- 2*PH buffer powders
- 3*English manual

ATTENTION

- 1.Recalibration is required in the following conditions:
 - Lengthy periods of inactivity - Very frequently use
 - The testing accuracy requirement is very high.
- 2.The "cal"(calibration) button was pushed and electrode exposed to air for extended period of time.
- 3.If you calibrated the meter in the air or in wrong calibration solution,there will flash"ERR"on the screen.
- 4.When the tester is on, the value is jumping in the air, which is a normal phenomenon.
- 5.The product is modular design, if the probe is damaged, you can buy the probe for replacement
- 6.Please recalibrate the device after replacing probe
- 7.Always replace protective cap after using digital meter to keep electrode from drying out due to prolonged exposure to air, which leads to slow or unstable readings.
- 8.If electrode has been dried out , immerse it into distilled water for a few hours.
- 9.People should press the TEMP and HOLD Buttons for 3 seconds at the same time to reset it,when the date is abnormal.

6

When the display value is fuzzy or unshown,The battery should be replaced promptly or charge it in time. Pay attention to the polarity of battery.