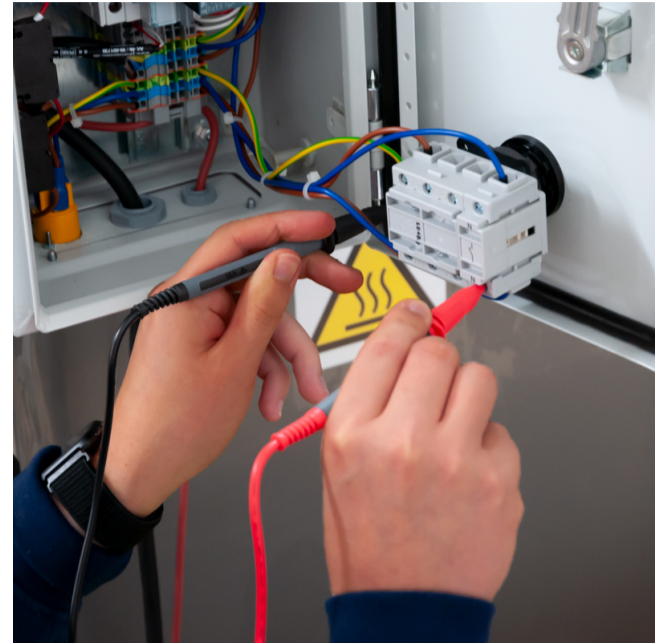


Insulation Tester PCE-IT 120



Insulation tester PCE-IT 120

"Auto Ranging" insulation tester up to 8 GΩ in a compact housing

The insulation measuring device PCE-IT 120 detects insulation resistance up to max. 8 GΩ (with auxiliary voltages of 250, 500 and 1000V). In addition, this insulation measuring device offers a measuring function for DC and AC voltages up to max. 950V DC and 700V AC as well as resistors up to max. 2 kΩ. A continuity tester with beep is integrated. Furthermore, the insulation meter can be used to check the polarization index and the dielectric ratio.

The measured values can be recorded at the touch of a button in the OLED display of the insulation tester. The device complies with DIN 57 411 part 1 / VDE 0411 part 1, protective measures for electronic measuring instruments (IEC1010-1) and DIN VDE 0413 (insulation tester). The insulation tester is always factory-calibrated and can be equipped with an ISO calibration certificate (at first order or at a recertification, eg annually).

Definition of the insulation resistance: The insulation resistance is the resistance in ohms for conductors, cables and electrical installations. It is therefore of great importance for the preventive protection of persons against electric shock or the avoidance of property damage by flowing leakage currents. Insulation resistance measurements are used to check and assess the condition of the insulation (conductor and housing).

- ▶ OLED display
- ▶ Automatic polarity display
- ▶ Automatic range selection
- ▶ Automatic zeroing
- ▶ Discharge beeper for insulation measurements
- ▶ Overload protection during continuity test
- ▶ Safety function, the voltage is held only 10 seconds (can be deactivated)
- ▶ Hold function
- ▶ PI and DAR test

Specifications

Measuring ranges	2 GΩ / 250V
	4 GΩ / 500V
	8 GΩ / 1000V
	ACV: 0 ... 950V DCV: 0 ... 700V
Resistance / passage	0.01 ... 1999 Ω
Resolution	Isolation: 1/10/100 MΩ
	ACV: 1V
	DCV: 1V
Resistance / passage	0.01 / 0.1 / 1 Ω
Accuracy	Isolation: ± 3%
	ACV: ± 1.5%
	DCV: ± 1.5%
Resistance / passage	± 2.0%
DC test voltage	250/500 / 1000V
Short circuit current	1.1-mA
Display	2-line 16-fold OLED display
Power supply	8 x 1.5V AA battery
Dimensions	175 x 85 x 75 mm / 6.9 x 3.3 x 3 in
Weight	About 655 g / 1.4 lbs
Environmental conditions	0 ... 40°C / 32 ... 104°F
Storage conditions	-10 ... 50°C / 14 ... 122°F
Degree of protection / standardization	IEC 1010-1, 700V CAT III

More information

Manual



More product info



Similar products



Subject to change