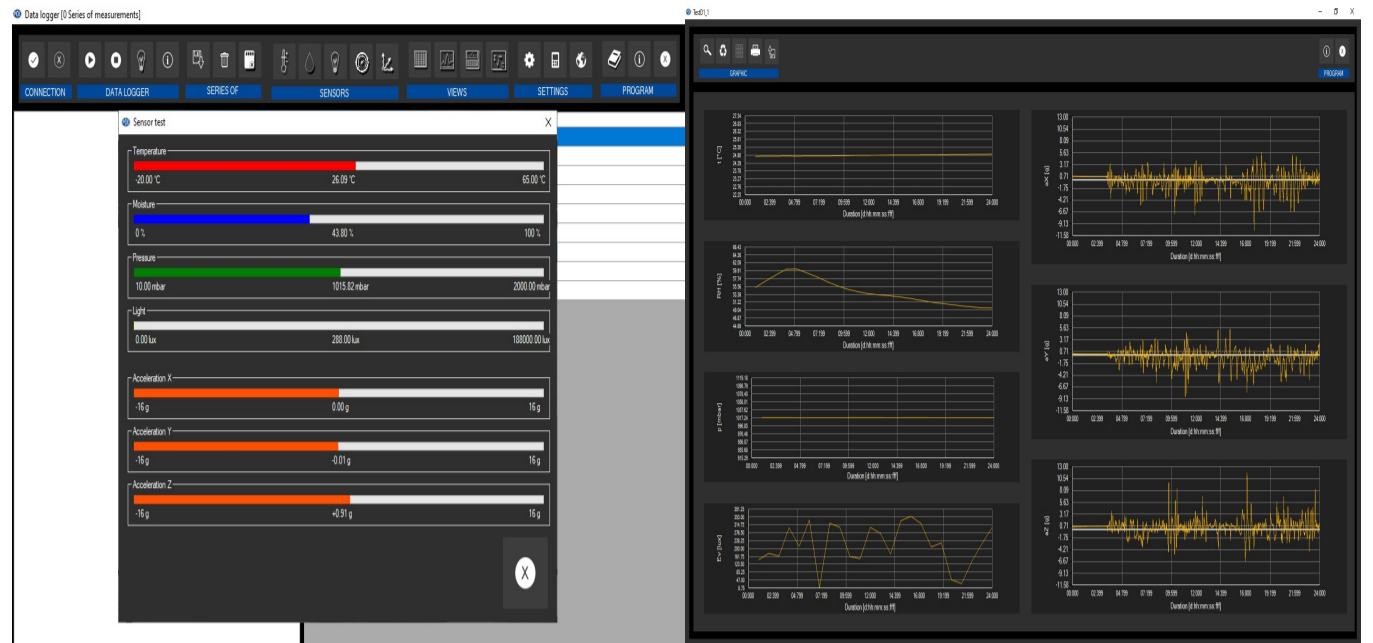


# Shock Data logger PCE-VDL 16I



## Shock Data logger PCE-VDL 16I

With up to 800 Hz / Temperature, Humidity, Air pressure, Vibration, and Light

The shock data loggers of the PCE-VDL series are available in two versions. The shock data logger PCE-VDL 16I contains sensors for the following physical units: temperature, humidity, air pressure, light and 3-axis acceleration. The max. sampling rate of the acceleration sensor is 800 Hz, the remaining sensors are sampled with max. 1 Hz.

The shock and vibration logger is therefore ideally suited for use in fault diagnosis, stress testing, machine inspection, shock measurements and preventive maintenance.

- ▶ 3-axis Acceleration up to 800 Hz
  - ▶ For temperature, humidity, air pressure and light
  - ▶ 32 GB SD memory card
  - ▶ Small design: 86.8 x 44.1 x 22.2 mm / 3.4 x 1.7 x 0.87 in
- **Made in Germany**

# Specifications

## Temperature

Measuring range -20 ... 65°C / -4 ... 149°F

Accuracy  $\pm 0.2^{\circ}\text{C}$  /  $\pm 0.36^{\circ}\text{F}$

Resolution  $0.01^{\circ}\text{C}$  /  $0.018^{\circ}\text{F}$

Max. Sampling rate 1 Hz

## Humidity

Measuring range 0 ... 100% r.H.

Accuracy  $\pm 1.8\%$  r.H.

Resolution 0.04% r.H.

Max. Sampling rate 1 Hz

## Air pressure

Measuring range 10 ... 2000 mbar

Accuracy  $\pm 2$  mbar (750 ... 1100 mbar); otherwise  $\pm 4$  mbar

Resolution 0.02 mbar

Max. Sampling rate 1 Hz

## Light

Measuring range 0.045 ... 188,000 Lux

Resolution 0.045 Lux

Max. Sampling rate 1 Hz

## 3 Axes Acceleration

Measuring range  $\pm 16$  g

Accuracy 0.24 g

Resolution 0.00390625 g

Max. Sampling rate **800 Hz**

# More information

Manual



More product info



Similar products



Subject to change