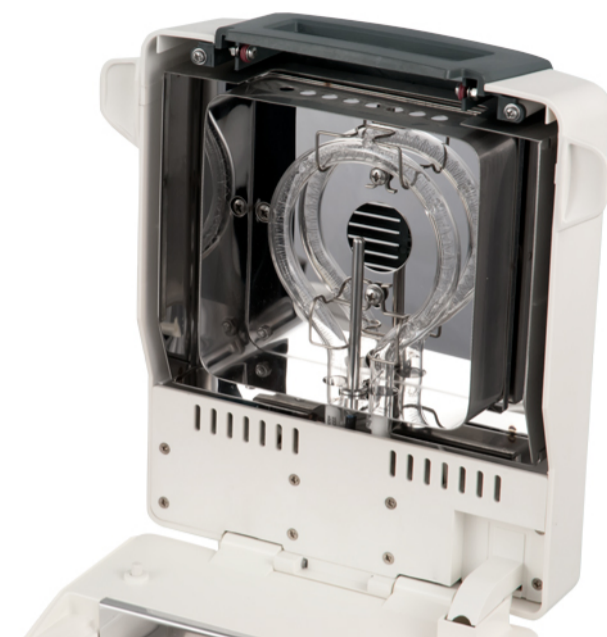


Analytical Balance PCE-MA 200



PCE-MA 200 Analytical Balance

Oven-drying moisture analyzing balance for weighing and halogen-heating samples to determine moisture content / Accuracy to 0.01 %

The analytical balance PCE-MA 200 allows different materials to be weighed and their moisture contents determined. The heating chamber is heated by halogen lamps up to 199 °C. In this chamber, the analytical balance dries the material to be weighed, and then calculates the moisture content from the weight difference. The analytical balance can determine the smallest weight differences thanks to a readability of 0.001 g. The results are displayed on the large LCD display. Up to 15 different drying programs can be stored in the memory of the analytical balance. Accordingly, the analytical balance is suitable for quality control of wood products, granules, pellets, feed, food, pastes and more. With the included 100 g weight, the analytical balance can be calibrated at any time.

- ▶ Weighing range: 200 g
- ▶ Readability: 1 mg / 0.001 g
- ▶ Heating chamber for moisture determination
- ▶ RS-232 interface
- ▶ Memory for up to 15 drying programs
- ▶ Adjustable drying temperature and time
- ▶ Ease of use
- ▶ Calibration function for readjustment
- ▶ 100 g calibration weight included
- ▶ Large LCD display with nine membrane keys
- ▶ Accuracy to 0.01 %

Subject to change

Specifications

Technical specifications

Weighing range	200 g
Readability	1 mg / 0.001 g
Heating element	halogen lamp
Temperature range	+40 ... +199 °C
Heating time	1 ... 99 min. adjustable
Humidity measurement range	0 ... 100 %
Readability	0.01 %
Memory	15 drying programs
Interface	RS-232
Display	LCD, 9 membrane keys
Power supply	220 V / 50 Hz or 110 v / 60 Hz
Dimensions	200 x 180 x 380 mm

More information

Manual



More product info



Similar products



Subject to change