

SINGLE USE TEMPERATURE DATA LOGGER USER MANUAL



INTRODUCTION

Small, light, waterproof and in a food safe wrapper, the single used data logger is ideal for monitoring the temperature of shipments in transit. Recordings are started by pressing the start button. The data logger is then placed inside the carton and dispatched. At the receiving end, the data logger is taken from the package and removed from the protective wrapper. It is placed into the USB slot on a computer to download data and export report via software that can be downloaded on a website anywhere.

APPLICATIONS

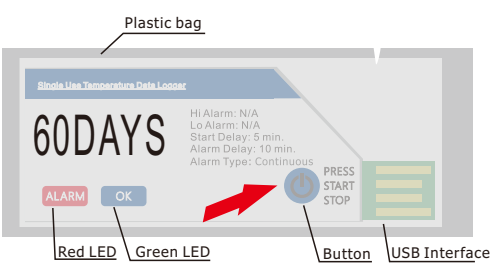
This data logger is used mainly to monitor and verify temperature-sensitive goods, equipment or areas. Example: Cold Chain, Refrigeration, transportations and food&pharmaceutical.

SPECIFICATIONS

Use Type	Single Use
Measurement Range	-30°C ~ +70°C (-22°F to 158°F)
Measurement Accuracy	±0.5°C (±0.9°F)
Resolution	±0.1°C (±0.1°F)
Data Storage Capacity	Max. 32000 readings
Elapsed Time	30, 60 and 90 days. User can choose others
Start Mode	Press Button
Stop Mode	Press Button; When Full
High/Low Alarm	Can be set according to user's requirement
Start Delay	From 0 to 60min.
Alarm Delay	From 0 to 60 min.
Alarm Type	Single Type; Accumulation Type
Operation Range	0 to 100%RH -30 to 70°C
Storage	Recommended 20 to 60%RH, 10 to 50°C
Dimensions	80mmX48mmX4mm
Weight	Approx. 11 grams
Protection Class	IP67
Standard Compliance	CE , ROHS , GSP , EN12830
Communication Interface	USB2.0
Shelf Life / Battery	1 year at 10min. rate/3.0v Lithium Battery
Software	DGraph Easy for windows xp/7/8/10

1. START

Press and hold the button until the green LED lights to start logging. If the green LED doesn't light after pressing and holding the button for about 5 sec., please don't use this data logger. This is a single use data logger, so must make sure it's correct to start. When logging, one of the LEDs will flash once every 30sec.



2. PLACE

Put the data logger in the place or specific environment where you want to monitor and record.

3. STOP

Press and hold the button until the RED LED lights to stop logging. User can see the RED LED indication to determine whether readings exceed alarm limits. If the red LED flashes once every 30sec., It shows some readings exceed alarm limit settings.

4. DOWNLOAD AND INSTALL SOFTWARE&DRIVER

User needs to prepare a PC with windows XP/vista/7/8/10(32bits or 64 bits) OS and USB port. User needs to make sure the PC can access to the internet. Go to our provided website to download the supporting software and driver. User can get the website address from the dealers.

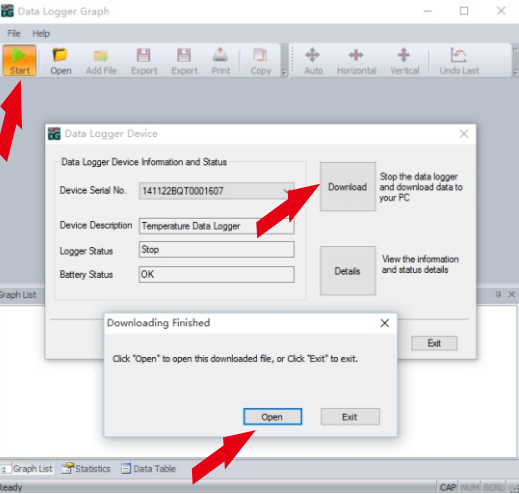
Double click the "setup.exe" file included on the "Software" directory to start installing. Follow the on-screen prompts to complete installation. User will see a new icon Data Logger Graph on your desktop. After completing the software installation, double click the "USBXpressInstaller.exe" file included on the "Driver" directory to start installing. Follow the on-screen prompts to complete installation.

5. DOWNLOAD DATA

Tear the plastic bag and you can now plug the data logger into an available USB port on the PC. A few minutes later, your computer will show a message that the driver for this data logger device has been installed normally.



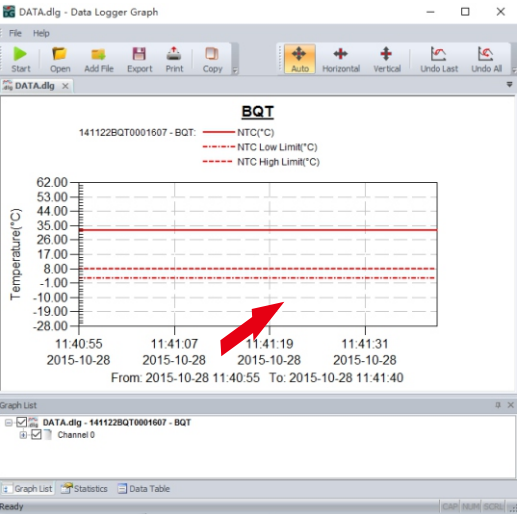
1. Double click "Data Logger Graph" icon on the PC's desktop to run the software.
2. Click on the "Start" button on the toolbar, and then "DOWNLOAD" button on the "DATA LOGGER DEVICE" dialog. Here you can follow the screen instructions to download and save the data to PC.
3. After downloading finished, a "Downloading Finished" dialog will be shown, user can click the "Open" button to graph the downloaded data.



6. VIEW GRAPH AND PRINT REPORT

Open the data on the installed software and view graph line, print report, or export file report.

For software details, please see the software help.



Graph